



AUT

TE WĀNANGA ARONUI
O TĀMAKI MAKĀU RAU

UNIPREP

Whānau Guide

Information
for parents
and whānau

NGĀ IHIRANGI CONTENTS

Welcome	3
What is UniPrep?	4
Benefits of doing UniPrep	6
Uni101: Completing a first university course	8
Student support	10
What to expect each week during UniPrep	12
What's next?	14
About AUT	15

Nau mai, haere mai ki UniPrep Welcome to UniPrep

This year, UniPrep enters a new decade of making a difference in the lives of aspiring university students. It is remarkable that in a world where programmes come and go quickly, UniPrep has been such a consistent and exciting part of AUT.

Now in its 11th year, UniPrep has established itself as a sector-leading programme and a source of pride for our university. It not only equips students with the necessary skills to thrive at university but also provides a holistic academic, cultural and social preparation to help shape their future at AUT.

UniPrep will give students a strong head start in the transition from school to university before the first semester begins. The course includes academic development, diverse social and cultural activities, course and career counselling, support and resources, and engagement opportunities for whānau.

But UniPrep also channels something deep from within the cultures of its people – both staff and students. It provides them with an established support network of peers, friends and AUT staff members from day one at university.

I often observe that while talent is everywhere in our world, opportunity isn't, and that when universities get it right, they become places where talent can find opportunity. That is a core mission for UniPrep, and it is a powerful and urgent mission that has meant UniPrep is as relevant and important as it was a decade ago.

AUT has created UniPrep as a place and a community where students can learn to navigate the challenges ahead. Together, we have sparked and kindled a fire of personal and community change; the task is to carry it forward to transform ourselves, our world and our futures.

Ia manuia!

Toeolesulusulu Professor Damon Salesa
Vice-Chancellor, Auckland University of Technology



He aha a UniPrep?

What is UniPrep?

Because university is very different from secondary school, UniPrep is a free programme to help school leavers have the best possible start to their university experience and smoothly transition from secondary school to university. This empowering programme is delivered over the summer break at the AUT South Campus in Manukau.

UNIPREP 2025

WHEN:
23 Jan–28 Feb 2025

WHERE:
AUT South Campus,
Manukau

COST:
FREE

What the programme covers

- Completing a first university course, Uni101
- Key academic skills and what is expected to study at university
- First-hand experience of university life, facilities, and available study, wellbeing and financial support
- Interactive team activities focused on problem-solving and collaboration skills
- Cultural activities to help students build a strong and supportive network, and feel a sense of belonging
- Practical skills related to university, including setting up a bank account, and applying for a student loan

AUT VALUES

AUT has adopted the Māori values of pono, tika and aroha

PONO

Fact, truth, reality, integrity

TIKA

Act accordingly, appropriate action, ethical expression

AROHA

Empathy, care, compassion, passion



Ngā hua o UniPrep

Benefits of doing UniPrep

There are many things your loved one could be doing over summer, so why should they spend five weeks to do the UniPrep programme? Here are six reasons why:

01 Skill development

Students develop the study techniques and academic writing, referencing, critical thinking, time management and effective communication skills they need for university

02 Confidence building

Participating in UniPrep helps students grow their confidence and start university feeling prepared

03 Community and belonging

By meeting other students, mentors and university staff, students feel connected, motivated and reassured as they start their university journey



04 Practical life skills for university and the workforce

Students grow their independence, complete their first academic milestone to add to their CV, and learn how to access university support systems and financial support like student loans and scholarship applications

05 Holistic support

Students feel valued and respected, with support that stretches across students' academic, emotional and spiritual wellbeing, and celebrates each student's cultural heritage and identity

06 Active whānau engagement

UniPrep keeps whānau informed and connected to students' experience, with opportunities for whānau to understand the university environment and support their teen's aspirations

WHAT OTHER STUDENTS SAY ABOUT UNIPREP

"Unlike other students I had no idea what the university experience entailed, from simple things like how an academic semester is structured to more complicated aspects of university life like scholarship and StudyLink applications. The thought of university can be scary, especially if it's a space that's foreign to you and your family, but AUT and the UniPrep team made me feel safe and like I mattered."

Fine Na'akakala 'E Moala Aholelei

Tonga

Bachelor of Arts in International Studies and Social Sciences, Master of Education



Tūtuki Aromatawai

Uni101: Completing a first university course

One of the key aspects of UniPrep is the course Uni101; a chance for students to complete their very first course at a university. This helps them develop the important study skills they will need for university – from how to express their ideas at university level and write at an academic level, to how to manage their time effectively and where to find support for their studies.

Uni101 learning outcomes

Students will build confidence in themselves and their people to collectively succeed in an academic environment while honouring and uplifting Te Tiriti and Indigenous knowledge systems from across Te Moana-Nui-a-Kiwa.

01 Demonstrate personal strategies and self-management techniques to support successful individual and collaborative engagement in the university context

- Connect to their whakapapa and be able to articulate shared ancestral ties
- Learn to navigate the academic environment using wayfinding strategies based on collaboration and reciprocity

02 Identify and apply a range of academic skills to articulate academic arguments

- Begin to understand and craft their positionality in an academic context
- Connect to and learn various cultural approaches from Te Moana-nui-a-Kiwa that help express academic arguments

03 Identify and apply a range of strategies as a reflective learner to enhance personal growth and belonging throughout the university experience

- Clearly articulate intentions, purpose and grounding
- Identify key mentors and peer supports
- Understand the concept of tūrangawaewae and create a sense of belonging by tapping into networks and supports

ASSESSMENTS

Written assignments at university are quite different to those at secondary school. As part of Uni101, students will complete three different university-level assignments that will help them build their academic writing and critical thinking skills; giving them a head start on future assignments at university.

Who will be teaching UniPrep?

UniPrep is taught by passionate and knowledgeable AUT staff and students. Students will be placed into whānau groups, and each group will have its own Pou Whirinaki (student mentor) and teaching assistant.

Guest lecturers include:



Toeolesulusulu Professor Damon Salea

Satapuala, Falealupo, Neiafu, Falelima, Vaisala, Salelavalu and Vaivase

Toeolesulusulu Professor Damon Salea is AUT's Vice-Chancellor, a prizewinning historian, former Rhodes Scholar and well-respected senior leader in the university sector.



Professor Ella Henry

Ngātikahu ki Whangaroa, Te Rārawa, Ngāti Kuri, no Muriwhenua

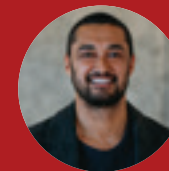
A member of the New Zealand Order of Merit, Professor Ella Henry is a prominent senior Māori academic and media expert, with particular expertise in Māori Indigenous business.



Dr Toiroa Williams

Te Whakatōhea, Ngāi Tai, Te Whānau a Apanui

Dr Toiroa Williams is a lecturer who specialises in Māori language research and is passionate about reconnecting communities and families with their culture, language and history.



Tuputau Lelaulu

Vaovai, Gataivai

Tuputau Lelaulu is an architect, academic and community leader who is passionate about better built and learning environments for Māori, Pasifika and vulnerable communities.

Manaaki ākonga

Student support

At AUT we're proud of offering students all the support they need to thrive in their studies and be ready for any challenge in front of them. Our UniPrep programme is no exception. All our UniPrep students have access to a wide range of support services to help them transition to university life and this exciting new chapter of their life.

Course and career counselling: Our expert team guides students to match their studies with their long-term career goals.

Academic mentoring and tutoring: Personalised support is available to help students with their academic work, including guidance on assignments, study techniques and exam preparation.

Peer support network: Students are connected with peer mentors who provide guidance, offer support and share their own experiences.

Wellbeing and counselling services: Our wellbeing advisors help students manage stress, stay motivated and maintain a healthy balance between their studies and personal life.

Study skills workshops: Essential skills like time management, effective notetaking, academic writing and research strategies are covered to help students feel prepared for university-level study.

Financial and administrative assistance: Our team offers students guidance on how to apply for scholarships, student loans or student allowances, where to get financial support and provides advice on practical life administration tasks.

Cultural and spiritual support services: Dedicated cultural and spiritual advisors help students stay connected to their heritage and beliefs, and navigate the university environment in a way that honours their cultural identity and community.

Disability support: Students with disabilities or learning challenges can access tailored support to help them make the most of their studies.

Career planning and advice: Students can access a range of resources and workshops to plan their academic and career pathways.



WHAT OTHER STUDENTS SAY ABOUT UNIPREP

"UniPrep gives you a better understanding of what to expect at AUT – from academic expectations to campus life. I found it helpful for developing essential skills like time management and study techniques, which helped boost my confidence for the upcoming semester. It's a fantastic way to meet new people, learn new things, and create unforgettable memories."

Riku Aupouri

Te Aitanga-a-Mahaki, Ngāti Wāhia
Certificate in Sport and Recreation,
Bachelor of Sport and Recreation

Wātaka UniPrep

What to expect each week during UniPrep

UniPrep is run over the summer break from 23 January to 28 February 2025, four days a week. During this time, students attend lectures and tutorials to provide them with the necessary knowledge, skills and support to successfully complete the course Uni101 and prepare them for university life.

In addition to the UniPrep sessions, students also need to set aside time outside of these hours to complete assessments and prepare for classes.

From 3.30pm to 4.30pm from Mondays to Thursdays, students are welcome to stay on longer so they can study, with staff available to support them. Fridays are an optional attendance day where students can come on campus to study or complete assignments with the support of teaching assistants and Pou Whirinaki.



Students attend Monday to Thursday, from 9.30am to 3.30pm



Three one-hour lectures and six hours of tutorial sessions each week



UniPrep students receive lunch every day



Self-study time outside of class to complete readings, online learning activities and assessments

Sample timetable

	Mon	Tues	Wed	Thur	Fri	
9.30-10.00	Sign in	Sign in	Sign in		Study support	
10.00-11.00	Lecture	Lecture	Lecture	Interactive tutorial		
11.00-12.30	Interactive tutorial	Interactive tutorial	Interactive tutorial			
12.30-1.30	Lunch	Lunch	Lunch	Lunch		
1.30-3.00	Engagement	Engagement	Engagement	Engagement		
3.00-3.30	Sign out	Sign out	Sign out	Sign out		Sign out
3.30-4.30	Study support	Study support	Study support	Study support		
Homework	Reading to prepare for your written assessment	Identify academic sources to use in your written assessment	Complete a draft outline of your written assessment			



WHAT OTHER STUDENTS SAY ABOUT UNIPREP

"I'd honestly recommend UniPrep to everyone who is feeling anxious about university. UniPrep eased my stress significantly because the programme took the time to introduce Canvas, Microsoft 365 and other applications we would be using at AUT, as well as what uni assignments would look like and what would be required of me. I felt much more prepared and confident when I started my degree compared to many of my classmates."

Kahlen Gray
Samoa, Ngai Tūhoe
Bachelor of Education (Primary Teaching)

He aha kei tua? What's next?

Once students have completed UniPrep, they are well-prepared to start a university programme. Many UniPrep students have already applied to start studying an AUT programme, but students who need further advice to navigate the different options can contact our team of future student advisors.



Book a course counselling session

Our experienced advisors can meet students in person to help navigate their study options. Our advisors can provide information on study programmes and guidance about any level of study.



Join a campus tour

Explore our facilities and buildings! Our campus tours are open to students and whānau.



Book an online/remotely call

Students can discuss their study options from the comfort of their home or anywhere worldwide.

✉ Email futurestudents@aut.ac.nz to book.

ABOUT AUT

Auckland University of Technology (AUT) is New Zealand's leading modern university and one of the largest in the country. We have three campuses: City Campus (Auckland City), North Campus (North Shore) and South Campus (Manukau). We offer a wide range of programmes across 15 study areas, with a focus on innovation and preparing students for their future careers.

To find out more visit
aut.ac.nz/study



ĒTAHI ATU KÖRERO FIND OUT MORE



aut.ac.nz/uniprep



uniprep@aut.ac.nz



0800 AUT AUT (0800 288 288)



[autuniprep](https://www.tiktok.com/@autuniprep)



[autuniprep](https://www.instagram.com/autuniprep)



[UniPrep at AUT](https://www.facebook.com/UniPrep.at.AUT)



AUT