

**AUT**

TE WĀNANGA ARONUI  
O TĀMAKI MAKĀU RAU

# PROSPECTUS

2026



**TOP 100**  
**WORLDWIDE**  
Young University

**AUCKLAND**  
**UNIVERSITY**  
**OF TECHNOLOGY**

TOP **1**%  
UNIVERSITIES  
WORLD WIDE

**5**  
OUT OF 5  
EMPLOYABILITY  
QS STARS 2023-25

**#1**  
IN NEW ZEALAND FOR  
INTERNATIONAL  
OUTLOOK

The cover design symbolises the far-reaching impact AUT has on students, their whānau, society and the world. The ripples represent this impact, while beneath them lies a modern Poutama pattern, symbolising the support and guidance AUT provides to students on their educational journey. A traditional Poutama design on the back connects to the front, reflecting the foundational role of Te Ao Māori in supporting and enhancing all aspects of AUT.

**Disclaimer:** Although every reasonable effort is made to ensure accuracy, the information in this document is provided as a general guide only for students and is subject to change. All students enrolling at AUT should consult its official document, the AUT Calendar, which is available online at [aut.ac.nz/calendar](https://www.aut.ac.nz/calendar), to ensure that they are aware of, and comply with, all regulations, requirements and policies. The information contained in this Prospectus was correct at the time of print, January 2025

About AUT	06		
Architecture & Built Environment	18	Art & Design	22
		Business	26
Communication Studies	32	Creative Technologies	36
		Education	40
Engineering, Computer & Mathematical Sciences	44	Health Sciences	50
		Hospitality, Tourism & Events	56
Language & Culture	62	Law	66
		Māori & Indigenous Development	70
Science	74	Social Sciences & Public Policy	78
		Sport & Recreation	82
Applying to AUT	86		

## Nau mai, haere mai ki AUT WELCOME TO AUT

**E ngā mana, e ngā reo**

To the prestigious, the many voices

**E te iti, e te rahi**

The few, the great

**E ngā mātāwaka o ngā tōpito o te ao**

To those of all races and creeds

**Ngā mahuetanga iho e kawē nei i ngā**

We who remain to fulfil the dreams and aspirations of the ancestors

**moemoeā o rātou mā**

Greetings one and all

**Tēnā koutou katoa**

**Piki mai rā, kake mai rā,**

Climb, ascend

**Nau mai, haere mai ki tēnei o ngā wānanga**

Embark on the journey of knowledge

**Whakatau mai i raro i te korowai āhuru**

Let us at AUT embrace and empower you

**o Te Wānanga**

To strive for and achieve excellence

**Aronui o Tāmaki Makau Rau**

**Te whakatupu i te kōunga, i te mana taurite me ngā**

**tikanga matatika, i ngā pūkenga ako,**

**i ngā pūkenga whakaako me te āta rangahau hei hāpai**

**i ngā hāpori whānui o te motu, otirā, o te ao.**

To foster excellence, equity and ethics in learning, teaching, research and scholarship, and in so doing serve our regional, national and international communities.



## Nau mai ki te Wānanga Aronui o Tāmaki Makau Rau

Welcome to Auckland University of Technology

We are Aotearoa New Zealand's university of technology and university of opportunity, where students learn, research and live in one of the world's most dynamic and culturally rich cities.

We produce graduates the world needs, discover and apply knowledge with purpose, and work in partnership to accelerate our impact.

At AUT, our mission is to enrich lives and produce graduates the world needs. Our students learn and research in an engaging environment that encourages them to participate and develop their own views, to challenge and be challenged, to learn deeply and apply their knowledge in real situations. Students are connected to industry and business through work placements, internships and entrepreneurial programmes and engage with the community through volunteering and leadership initiatives.

We are New Zealand's only university of technology and the only New Zealand university ranked both among the top 1% of universities in the world and in the top 100 universities under 50 years of age. We are ranked first in New Zealand for international outlook, with more than 150,000 alumni worldwide, and provide exceptional learning experiences in state-of-the-art facilities guided by world-class academics and support staff.

We offer over 250 undergraduate and postgraduate programmes across our three

modern campuses and specialist locations, making AUT one of the largest universities in New Zealand. Many of our subject areas are world-ranked, and our graduates are highly employable nationally and internationally. Our global network of industry and tertiary partners provides opportunities to broaden the student experience further.

We are committed to building a culture of open-mindedness, curiosity and questioning where our researchers and students think critically, listen carefully and speak courageously. At AUT, we believe deeply that education transforms the lives of not only learners and graduates but also the network of people and communities they are connected to.

Our prospectus describes the AUT student experience in the words of the people who know it best – our students, past and present, from all around the world. However, a prospectus can only go so far, and the best way for you to gain insight into life at AUT is to visit us and experience it for yourself.

We look forward to welcoming you to our university and helping you find your greatness at AUT.

Professor Damon Salesa  
Vice-Chancellor  
Auckland University of Technology

Our Māori name, Te Wānanga Aronui o Tāmaki Makau Rau, reflects our mission and purpose. **Tāmaki Makau Rau** acknowledges our long history and connection to Auckland and its people; **Wānanga** is the opportunity to gather, persevere and venture into new learning spaces; **Aronui** refers to deepening our knowledge and understanding and references one of the three baskets of knowledge in Māori lore – Te Kete Aronui. The knowledge attained in this basket centres around the human experience of discovery, technology and innovation and the transformative power of education and research.

Therefore, **Te Wānanga Aronui o Tāmaki Makau Rau** refers to a place that celebrates the pursuit of knowledge and embraces new realisations that reflect our world, which is meaningful, impactful, and transformative for collective wellbeing and advancement.



**TOP  
RATED  
FOR  
ACADEMIC  
TEACHING**



CHOOSE FROM OVER  
**250**  
COURSES OF STUDY



60+ research centres and institutes with world-class expertise



**26,500**  
STUDENTS



**QS STARS 2023-25**

For Employability,  
Environmental Impact,  
Facilities, Internationalisation,  
Research & Teaching



**150,000+**  
alumni





"When you're choosing where you want to study, it's about much more than a name or a brand. For me, AUT was a special place to study that surpassed my expectation in terms of the student experience, and with bonds and connections that are irreplaceable. I'd go back to AUT in a heartbeat."

**Joe Lolo**

*Te Rarawa, Ngāpuhi, Tongan*  
Bachelor of Arts in Education with a minor in English and New Media Studies

"I enjoyed the amount of practical work we got to do. Talking to my friends at other unis, I could tell that I was in the lab far more often, getting to use what I had learnt. AUT is set up with so many connections in industry, government and crown research institutes, and there are many cool opportunities you can get exposure to."

**Jack Vasey**

Master of Science (Research)  
Bachelor of Science in Microbiology

"AUT is one of the most recognised universities in New Zealand, particularly for its teaching methods. The emphasis on practical learning, rather than simply theory, caught my attention when I was choosing a university. AUT is renowned for producing industry-ready graduates, and has strong connections with business and technology sectors."

**Mirasha Fernando**

Bachelor of Science in Analytics  
with a minor in Data Science

"As an AUT student, you're not just working towards a degree but are also gaining access to incredible opportunities, connections and resources that can significantly enhance your career and future. From having industry professionals in our lectures to receiving emails about career expos, potential job offers and CV workshops, these opportunities have been the highlight of my time at AUT."

**Dilon Kumar**

Bachelor of Business in Accounting and Marketing

"A great part of studying at AUT is the workplace experience you can get involved in. For me, this was important when deciding where I wanted to study as I figured it would give me the opportunity to put my learning into practice and get a glimpse into working life. This was one of many reasons why AUT was my university of choice."

**Lilli Ford**

Bachelor of Arts in Psychology

"AUT offers a great and supportive learning environment, and you can tap into the support services for students because they really do care. The lecturers are great, and the smaller class numbers were also a big thing for me. I'm proud to be a graduate of such a supportive and leading modern university."

**Marie Loraine Esekielu**

Graduate Diploma in Secondary Teaching  
Bachelor of Science in Chemistry



# He aha ai e ako ki AUT? WHY STUDY AT AUT?

## New Zealand's leading modern university

AUT is one of the world's best modern universities. We're one of the largest universities in Aotearoa New Zealand and the fastest growing postgraduate study destination, with 250 programmes and more than 150,000 alumni all over the world.

Study with us and you'll join New Zealand's most diverse and vibrant university, and develop the skills for rewarding careers in a wide range of industries and professions. Our courses encourage innovation and entrepreneurship, and the ability to explore new technologies, challenge routine thinking and make a positive difference.

AUT is where talent meets opportunity, and we're proud of the success of our students, in Aotearoa and around the world.

## Preparing you for a bright future

With an AUT degree you'll graduate with a qualification that is widely regarded, and with valuable experiences and industry connections for your future. Times Higher Education has ranked us in the top 1% of universities in the world, the top 100 universities under 50 years of age and number one in New Zealand for international outlook.

We're connected to an extraordinary range of organisations, and as part of your studies you could work with one of our industry partners. You learn from academic staff who are still actively involved in their professional fields, and we often invite industry experts to come in and share their knowledge with you. Many programmes also include workplace experience where you get real-life experience and important industry contacts before you even graduate.

With some of our bachelor's degrees you can even tailor your studies to your interests and include subjects from across AUT; meaning your degree can be as unique as you are. And if you want another way into AUT, our diploma programmes are a great way to start your studies and gain the confidence to succeed at university.

## Research that shapes tomorrow

Our research is focused on real-world impact, and we're proud of our reputation as a leading research university.

As an AUT student you could learn from globally renowned researchers who are experts in their fields. Their research often feeds back into the classroom, and you may even be able to contribute to these research projects.

We have more than 60 research centres and institutes delivering innovative research - from artificial intelligence and robotics to ecology and public health.

Our research addresses issues facing the environment, society and the world, and our discoveries are widely used, both in Aotearoa and around the world.

## Top facilities and equipment

To make sure your learning is relevant to your future career, you have access to top facilities and industry-standard equipment, including one of only a handful of motion capture studios in the country and New Zealand's top sport science facility, AUT Millennium.

Our three university campuses feature modern buildings that don't just win architecture awards but also offer excellent environments where you can gain practical experience, collaborate with your classmates and develop skills that help you stand out to employers.

We're proud of our five-star ranking for teaching and facilities, awarded by the world university rankings organisation QS. Our state-of-the-art buildings were created using sustainable principles and offer inviting lecture theatres, auditoriums and research spaces; offering you the perfect university environment for your studies.





# Oranga Taurira STUDENT LIFE

As a modern and innovative university, we offer you endless opportunities, and a supportive culture that celebrates diversity.

Here, you are at the heart of everything we do. At AUT, you'll find some of the most comprehensive student support services in New Zealand, designed in collaboration with our students. We'll support you to build friendships, develop life skills, achieve academically, and have amazing experiences both inside and outside the classroom.

"AUT is the sort of place where you can express yourself freely within a safe environment. The staff and wider student community have supported, encouraged, and pushed me to achieve great things. At AUT, you're definitely not just a number, you are you!"

**Kalen Chase**

*Ngāti Porou, Ngāti Kahungunu, Ngāphui, Taranaki Tūturū*  
Bachelor of Education (Primary Pasifika Teaching)

## The best start for your uni journey

Embarking on university life is exciting and perhaps a little daunting, regardless of your stage in life. With our wide-ranging support services, an orientation programme at the start of each semester, and multiple opportunities to help you meet new friends and follow a passion or hobby, you'll transition smoothly.

- **Advice from other students:** Senior AUT students play a key role in settling you into uni in your first eight weeks, with over 200 student ambassadors to guide you with studies and university life.
- **Tailored support:** Support services are tailored to your specific needs, from when you start your application through to the rest of your uni journey.
- **Connecting you to the AUT community:** You'll have opportunities to connect with likeminded people and activities right from the start.
- **A personalised digital experience:** With the AUT App it's easy to see what's happening across AUT and relevant to your time with us.



"The student ambassadors were the first people I met when I arrived at AUT. They were students who volunteered to help new students settle in and prepare for their university journey. This made my first day at university less anxious and more exciting."  
**Toetu Fatu Lafoai**  
Master of Analytics  
Bachelor of Science in Applied Mathematics and Computer Science

## Your home away from home

As a student you'll spend most of your time on campus, whether you're based at an AUT campus in the City, South Auckland or the North Shore. Each campus has its own vibe, and all are connected by shuttle buses or public transport. You'll have access to facilities, services and communities to make your campus as comfortable and safe as home.

- **Accommodation:** You'll benefit from the sense of belonging and support that comes from living in a close-knit and diverse community, with 24/7 residential care; your home away from home right on campus. It's easy to meet lifelong friends through our vibrant residential life programmes, and you can choose from single studios or shared apartment living near the City and North Campus.
- **Health and wellbeing:** You'll have access to medical centres, gyms and recreation centres on campus, free and confidential counselling sessions, and peer support from senior AUT students. You can also sign up for programmes to develop your self-knowledge and resilience.

- **Childcare:** Student parents can enrol their children at our Akoranga Childcare Centre at the North Campus. You can use private rooms for breastfeeding at all three campuses, and dedicated mātua/parents' rooms at the City and North Campus libraries.
- **Practising your faith:** You can access our multi-faith and prayer rooms, attend events and get support from our team of chaplains.
- **Speaking your language:** With students from 136 countries, some of the bilingual staff within our various support services may speak your preferred language. We have a team of NZSL interpreters and the counselling service Puāwaitanga offers sessions in 16 languages, including te reo Māori.
- **Safe and secure campuses:** Your safety on campus is our priority, with friendly security staff available day and night to help.

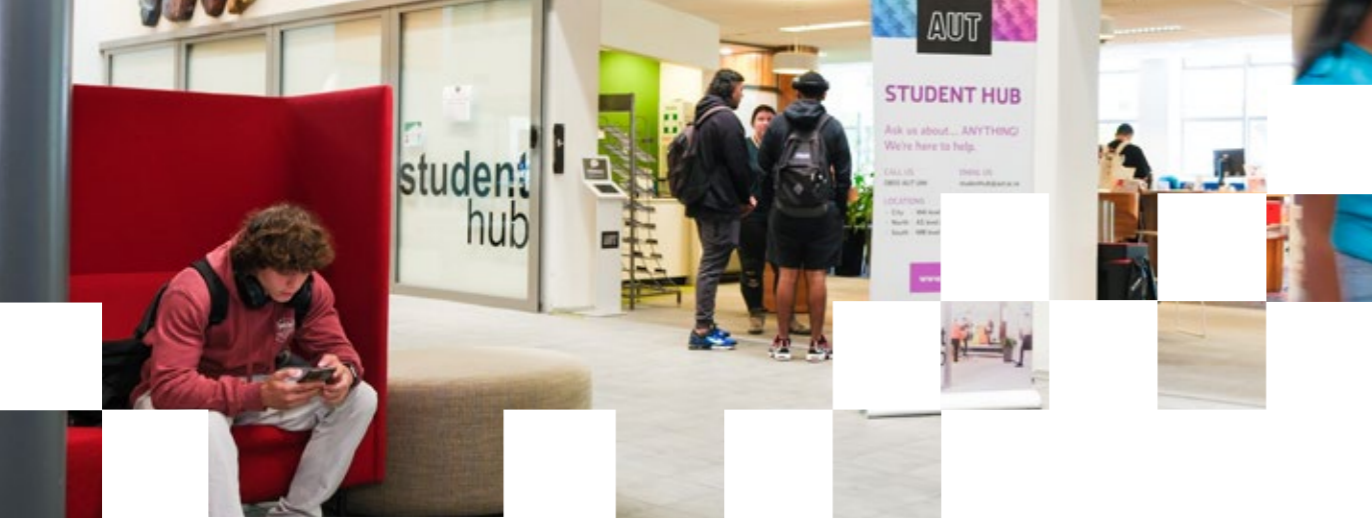
"You can feel that AUT is a great university. I feel safe walking around the campus, and Newsfeed café at the City Campus is definitely my go to place for a break and to grab one of their coffees. We have everything we need to succeed at AUT."

**Kim Keromen**

*Bachelor of Arts in Event Management and Global Tourism*







### Your place for support

At AUT, we celebrate diversity and are committed to Te Tiriti o Waitangi with passion, curiosity and pride. We're committed to supporting the aspirations of our Māori and Pacific whānau, and have dedicated teams to support all students. We were the first New Zealand university to appoint a full-time rainbow community coordinator, and are proud to be a Pride Pledge university. We support equity of access and opportunity for students, staff and visitors, and follow the principles of Kia Ōrite: Code of Practice for an inclusive tertiary environment that enables disabled, Deaf and neurodivergent students to achieve fully. Specialised community support services you'll find at AUT include:

- **Disability support:** Our team will work with you from before you start at AUT, help identify your specific needs and ensure you're set up for success. Services include adaptive technology and resources, NZSL interpreting, notetakers, advice on accessibility around campus, assistance with managing your studies and support for students with learning differences.
- **High performance athlete support:** If you're a high-performance student athlete, we'll enable you to combine your sporting goals with education, career and other life aspirations to succeed both on and off the sporting stage.
- **International support:** From bilingual staff to advice and support from a licensed immigration advisor on student visas and other relevant immigration matters, we'll ensure you'll feel at home in New Zealand.

- **Whānau Māori:** Being an AUT ākonga will be an inspiring and transforming time. It's important that you're academically and personally ready for the journey ahead, so take advantage of the opportunities and tautoko available to you. We offer āwhina, ako, wāhi and kaupapa. Our kaimahi are here to help, so come and join the whānau!
- **Pacific communities:** See us for guidance and advice to help you navigate your university journey with a holistic Pasifika approach to support you in your studies, so you can stay the course and cross the stage at graduation. You can visit our Vā Pasifika spaces on each campus to connect with your peers, access our wellbeing and academic support team, and join our social events.
- **Rainbow community:** Our rainbow room is a great place to study, connect and meet as a group, with support, resources and specialised services tailored to your needs.
- **Representing your interests:** The AUT Student Association (AUTSA) advocates and represents your interests, and shares students' voices through Debate magazine.

"In general, I'm quite a reserved person but coming to AUT's Office of Pacific Advancement has given me, as well as so many other Pacific students, the opportunity to find a village on campus and foster a community."  
**Fine Na'akakala 'E Moala Aholelei**  
 Master of Education  
 Bachelor of Arts in International Studies and Social Sciences

**Student Hub:** Our professionally qualified staff, including social workers and occupational therapists, are ready to support our diverse student community. The Student Hub is your go-to for navigating all your opportunities, providing the support you need from when you apply to after you graduate.

### Achieve your academic goals

Our goal is to help you achieve your academic dreams and set you up for a successful career, with access to all the people, resources and technology you'll need.

- **Learning support:** Support from librarians, learning advisors, community support groups and tools like Studiosity will help you ace your assessments. You can get guidance on writing, research, notetaking, exams and reading skills through assessment advice appointments, workshops and online assessment resources provided by Te Mātāpuna Library & Learning Services.
- **Free technology access:** You can use our computer labs, laptops, printers, IT support, free wifi on campus, the full Microsoft 365 suite, LinkedIn Learning, and have remote access to AUT computers for specialist software that isn't easily available on personal devices.
- **Financial hardship support:** If you experience financial difficulty, come and see us for help with food or transport vouchers, rent and living expenses, and even laptops and data packages.
- **Graduate Research School:** Our dedicated staff and specialised postgraduate research support services from application to graduation will help you throughout your studies.

- **Vibrant research culture:** Join us for opportunities to collaborate, connect, share and celebrate ideas on multiple platforms across AUT.

"The support and infrastructure behind learning has been great, with computers and wifi available on campus, study areas, accurate and easy to access timetabling, and support from the Employability and Careers team who will analyse your CV and cover letters."

**Matthew Eaton**  
 Bachelor of Engineering Technology in Mechanical Engineering





## STUDENT LIFE (continued)

### Beyond learning and into employability

Our services and award programmes help you become a well-rounded graduate ready to succeed in New Zealand and the world, and support your career after you graduate.

- **Support for your future career:** Be workforce-ready from your first day at uni to your first day in your future job. You can access a full programme of employer presentations, events and workshops throughout the year, or use our two graduate job boards, including international career options.
- **Gain an AUT edge:** Develop sought-after skills through volunteering, leadership, and employability activities with the AUT Edge and Beyond AUT Awards.
- **Industry experience:** You can get practical workplace experience as part of your qualification thanks to the many industry partners we work with.
- **AUT Global international exchange:** Study overseas as part of your degree at one of AUT's partner universities around the world; your chance to immerse yourself in another culture, make lifelong friends and gain international experience to boost your employability.
- **Entrepreneurship:** To commercialise your AUT research, you can access funding and mentoring through AUT Ventures Limited.

"The support services at AUT are easily accessible. I found that the staff at the Employability Lab offer great opportunities, tips and advice, from connecting you with employers to helping you with your CV. The staff offer extensive support with any questions students may have."

**Bahar Raeisi**  
Bachelor of Medical Laboratory Science

### A vibrant uni experience

We want you to make the most of university life, have fun and grow during your time with us. Choose from a variety of initiatives and if you don't find something you enjoy, you can also create something new.

- **Clubs and events:** You can find student-led social, sustainability, cultural and academic clubs, and events across all campuses.
- **Sports:** Participate in social on-campus games and elite international competitions, or represent AUT against some of the best student athletes in the country through University Tertiary Sport (UTSNZ).
- **Recreation:** Don't miss our state-of-the-art sports facilities at AUT Millennium, on-campus gyms at every campus, and a swimming pool and courts for tennis, volleyball, basketball and other sports at the South Campus. Te Āhuru Recreation Centre at the City Campus is a great space to connect with friends and follow your interests, with a sports court, dance and exercise studios, flexible spaces for clubs to meet, an eSport arena, board games, and large spaces to gather and share food or enjoy arts and crafts.

"I've enjoyed the cool pop-ups around campus, the food stalls and games, and there are many clubs to join. AUT is a very friendly place. This is because it's not dull, and there is always someone you can talk to."

**Jess MacDonald**  
Bachelor of Design Te Tohu Paetahi mō te Hoahoa in Animation, Visual Effects and Game Design with a minor in Cinematic Arts





# ARCHITECTURE & BUILT ENVIRONMENT

At AUT you learn to design built environments that recognise indigenous values and address Auckland's rapid population growth, as well as global issues like housing affordability, global warming and homelessness. You'll be taught by professional architects, as well as professionals with backgrounds in design, engineering, computer science, creative technologies, media, business and entrepreneurship. You learn in an interactive environment where you collaborate with your classmates, mana whenua and experts from different disciplines to find innovative solutions that support community wellbeing and nurture future generations.



Draws upon global issues, indigenous worldviews and the need for sustainable design



Expert lecturers, nationally and internationally recognised in architecture, design, engineering and more



Students work on live, real industry briefs



Scan this QR code for details about courses, where your study could lead and stories about our great graduates and students.



## UNDERGRADUATE STUDY

**Bachelor of Architecture and Future Environments**

**Duration** 3 years full-time  
**Campus** City  
**Starts** 23 Feb 2026

**Bachelor of Construction**

- Construction Management
- Quantity Surveying

**Duration** 3 years full-time, part-time available  
**Campus** City  
**Starts** 23 Feb & 13 July 2026

**Bachelor of Design Te Tohu Paetahi mō te Hoahoa**

- Spatial and Interior Design

**Duration** 3 years full-time, part-time available  
**Campus** City  
**Starts** 23 Feb 2026

**Bachelor of Engineering (Honours)**

- Architectural Engineering
- Civil Construction Engineering

**Duration** 4 years full-time, part-time available  
**Campus** City  
**Starts** 23 Feb & 13 July 2026

**Graduate Diploma in Architecture**

**Duration** 1 year full-time  
**Campus** City  
**Starts** 23 Feb 2026

## POSTGRADUATE STUDY

**Master of Architecture (Professional)**

**Duration** 2 years full-time, part-time available  
**Campus** City  
**Starts** 23 Feb 2026

**Master of Engineering Project Management**

**Duration** 1 year full-time, part-time available  
**Campus** City & online study  
**Starts** 23 Feb & 13 July 2026

**Doctor of Philosophy**

**Duration** 3-6 years  
**Campus** City  
**Starts** 2 Feb, 4 May, 6 July & 5 Oct 2026

**Master of Construction Management**

**Duration** 1 year full-time, part-time available  
**Campus** City & online study  
**Starts** 23 Feb & 13 July 2026

**Master of Philosophy**

**Duration** 1 year full-time, 2 years part-time  
**Campus** City  
**Starts** 2 Feb, 4 May, 6 July & 5 Oct 2026

## WORLD-LEADING RESEARCH

AUT researchers work on projects across the built environment, in New Zealand and around the world, from advanced construction and regenerative design research to exploring the future of communities. As an architecture and built environment student, you can collaborate on projects, and work with graduates and architects to create meaningful change in the built environment. You work on research projects that demonstrate the way architecture, design intelligence and future cities can become intertwined.



"I have a background in the trades and wanted to move into building surveying. When I looked into jobs as a building surveyor, I found that a lot of them asked for a construction-related degree, so enrolling in the Bachelor of Construction in Construction Management aligned with my career development requirements. AUT was the best university offering the course I wanted to study and the City Campus, where the programme is taught, is welcoming and user friendly, prioritising students over cars. I've enjoyed the assignments in this programme as they're quite open in the way they can be approached and they feel like real-life situations."

**Nick Bycroft**  
 3rd-year student,  
 Bachelor of Construction in Construction Management

"I believe that architects have the ability to design spaces that inspire, uplift and improve the lives of those who interact with them. Another reason I decided to study architecture is that it combines my love of art and creativity with my desire to solve problems. I enjoy the challenge of creating beautiful, functional spaces that meet the needs of the people who will use them. I chose to come to AUT because when I visited the City Campus I felt a strong sense of community and liked the supportive environment. I'm ecstatic to be collaborating with the academic staff and my peers who share my enthusiasm for education and commitment to helping one another succeed."

**Laya Rasooli**  
 Master of Architecture (Professional) student  
 Bachelor of Architecture and Future Environments





# ART & DESIGN

Unleash your creativity with AUT's art and design programmes, ranked in the top 204 worldwide in the QS World University Subject Rankings 2024. Our programmes focus on the connections between different art and design disciplines, the importance of mātauranga Māori, and new and emergent technologies. You'll work in our art and design studio spaces, with access to world-class facilities that include three galleries, a 3D lab, printmaking, digital and photographic facilities, a motion capture studio and a virtual production studio that puts Hollywood technology in the hands of our students. You'll also have the chance to work on national and international projects, often with real industry clients.



**TOP 204**  
WORLDWIDE



Industry-leading studios,  
labs and technology



Award-winning,  
industry-experienced  
teaching staff



Scan this QR code for details about courses, where your study could lead and stories about our great graduates and students.



## UNDERGRADUATE STUDY

**Diploma in Design  
Tītohu mō te Hoahoa**

**Duration** 1 year full-time,  
part-time available

**Campus** City

**Starts** 23 Feb 2026

**Diploma in Visual Arts  
Tītohu mō te Toi Ataata**

**Duration** 1 year full-time,  
part-time available

**Campus** City

**Starts** 23 Feb 2026

**Bachelor of Design Te Tohu  
Paetahi mō te Hoahoa**

- Animation, Visual Effects and Game Design
- Communication Design
- Fashion Design
- Industrial Design
- Interaction Design
- Spatial and Interior Design

**Duration** 3 years full-time,  
part-time available

**Campus** City

**Starts** 23 Feb 2026

**Bachelor of Visual Arts Te  
Tohu Paetahi mō Toi Ataata**

- Painting, Printmaking and Drawing
- Photography, Sculpture and Moving-image

**Duration** 3 years full-time,  
part-time available

**Campus** City

**Starts** 23 Feb 2026

## POSTGRADUATE STUDY

**Master of Design**

**Duration** 1½ years full-time,  
up to 3 years part-time

**Campus** City

**Starts** 23 Feb 2026

**Master of Visual Arts**

**Duration** 1½ years full-time,  
up to 3 years part-time

**Campus** City

**Starts** 23 Feb 2026

**Master of Philosophy**

**Duration** 1 year full-time,  
part-time available

**Campus** City

**Starts** 2 Feb, 4 May, 6 July &  
5 Oct 2026

**Doctor of Philosophy**

**Duration** 3–6 years

**Campus** City

**Starts** 2 Feb, 4 May, 6 July &  
5 Oct 2026

## WORLD-CLASS RESEARCH

Our creative-led research covers a broad range of art and design disciplines; bringing together designers, visual artists, filmmakers and other creatives to explore different aspects of art and design. As an art and design student you have access to our industry-leading studios, labs and services. These include photographic and lighting facilities, a virtual production studio, and motion capture, printmaking and 3D labs. We're also the home of a suite of purpose-built galleries and project spaces dedicated to the development of contemporary art and a programme of exhibitions, events, symposia and publications.



"I enjoyed the studio environment at AUT, which encouraged exploration, and tactile experiments in the bindery and screen-printing room. It was all about finding our personal voice and the reasons why I want to design. During my time as an AUT student, two of my designs were featured in the BJ Ball 2024 type calendar and at our end-of-year exhibition AD23 I was awarded the Adam Tan Memorial Award in Display Typeface Design. My AUT capstone project – Huong Display, a typeface exploring my Vietnamese heritage – was also a winner for the Type Directors Club Young Ones award and part of their TDC70 Travelling Exhibition."

**Abbey Luong**

Junior Graphic Designer, Studio Pask, Christchurch  
Bachelor of Design in Communication Design with a minor in Design Thinking

"From a young age, I've enjoyed creating visualisations of desirable environments, whether it be built or natural. What I enjoyed most about my time at AUT was the inviting atmosphere the whole campus created – the environment made it easy to connect with peers both in my course and outside of it. I enjoyed when it was time to critique our work. Having critical feedback and seeing the improvements as each project progressed was both satisfying and rewarding. One achievement I was especially proud of was that my final-year university project was chosen and then displayed as part of the Nuffield Street exhibition. I also loved having the opportunity to talk to some of New Zealand's leading designers."

**Jeremiah Rogo**

Lighting Designer, Beca  
Bachelor of Design in Spatial Design





# BUSINESS

The AUT Business School has been awarded the prestigious EQUIS and AACSB accreditations, putting it in the top group of business schools in the world. Our programmes are designed in collaboration with business leaders, and integrate theory with current practice and global trends. As an AUT business student you'll have plenty of opportunities to develop your creativity, critical thinking, collaboration and communication skills, and complete internships and applied projects that give you the competitive edge for your career. Once you graduate, you'll be ready to challenge routine thinking, solve problems in new ways, explore new technologies, and make a positive social impact, no matter where your future career takes you.



Transforming business and society through our research



Connecting more students with employers through NZ's largest internship programme



Our business programmes are globally ranked and well regarded by employers



Scan this QR code for details about courses, where your study could lead and stories about our great graduates and students.



## UNDERGRADUATE STUDY

**Certificate in Business Studies**

**Duration** ½ year full-time, part-time available  
**Campus** City & South  
**Starts** 23 Feb & 13 July 2026

**Diploma in Business**

**Duration** 1 year full-time, part-time available  
**Campus** City & South  
**Starts** 23 Feb & 13 July 2026

**Bachelor of Business**

- Accounting © ⑤
- Economics ©
- Finance ©
- Human Resource Management and Employment Relations © ⑤
- Information Systems ©
- International Business and Strategy ©
- Management and Leadership © ⑤
- Marketing ©

**Duration** 3 years full-time, part-time available  
**Campus** City & South  
**Starts** 23 Feb & 13 July 2026

**Bachelor of Arts & Bachelor of Business conjoint programme**

**Duration** 4 years full-time, part-time available  
**Campus** City & South  
**Starts** 23 Feb & 13 July 2026

**Bachelor of Business & Bachelor of Computer and Information Sciences conjoint programme**

**Duration** 4 years full-time, part-time available  
**Campus** City & South  
**Starts** 23 Feb & 13 July 2026

**Bachelor of Business & Bachelor of Health Science in Psychology conjoint programme**

**Duration** 4½ years full-time, part-time available  
**Campus** City & North<sup>1</sup>  
**Starts** 23 Feb & 13 July 2026

**Bachelor of Business & Bachelor of International Hospitality Management conjoint programme**

**Duration** 4 years full-time, part-time available  
**Campus** City & South  
**Starts** 23 Feb & 13 July 2026

**Graduate Certificate in Business**

**Duration** ½ year full-time, 1 year part-time  
**Campus** City & South  
**Starts** 23 Feb & 13 July 2026

**Graduate Diploma in Business**

**Duration** 1 year full-time, part-time available  
**Campus** City & South  
**Starts** 23 Feb & 13 July 2026

## POSTGRADUATE STUDY

**Bachelor of Business (Honours)**

- Accounting
- Economics
- Finance
- Information Systems
- International Business
- Management
- Marketing
- Sport Leadership and Management

**Duration** 1 year full-time, part-time available  
**Campus** City  
**Starts** 23 Feb & 13 July 2026

**Postgraduate Certificate in Business**

**Duration** ½ year full-time, part-time available  
**Campus** City  
**Starts** 23 Feb & 13 July 2026

**Postgraduate Diploma in Business**

**Duration** 1 year full-time, part-time available  
**Campus** City  
**Starts** 23 Feb & 13 July 2026

**Master of Business**

- Accounting
- Economics
- Finance
- Information Systems
- International Business
- Management
- Marketing
- Sport Leadership and Management

**Duration** 1½ years full-time, part-time available  
**Campus** City  
**Starts** 23 Feb & 13 July 2026

**Master of Philosophy**

**Duration** 1 year full-time, part-time available  
**Campus** City & South  
**Starts** 2 Feb, 4 May, 6 July & 5 Oct 2026

**Doctor of Philosophy**

**Duration** 3–6 years  
**Campus** City & South  
**Starts** 2 Feb, 4 May, 6 July & 5 Oct 2026

## KEY

- © City Campus
- Ⓝ North Campus
- Ⓞ South Campus

1. Health courses offered at the North Campus.

“Coming from a rural background, I knew that knowledge of investments and personal finance can be a struggle to get into for regular Kiwis, so it was clear to me that this was a worthwhile pursuit. I chose to study at AUT because of the structure of the business degree and because the courses offered a direct path into the fields I wanted to gain exposure to. Helping to run events while I was a part of the AUT Investment Club was a highlight. We hosted several events with high-profile people from the New Zealand finance industry and the wider business landscape. I also met friends through the club that I’ll know for life.”

**Finlay Benton**

Investment Analyst, SBS Wealth  
 Bachelor of Business (Honours) in Finance with First Class Honours  
 Bachelor of Business in Finance





**Postgraduate Certificate in Business Administration**

**Duration** ½ year full-time, 1-1½ years part-time

**Campus** City<sup>1</sup>

**Starts** 23 Feb, 4 May, 13 July & 21 Sep 2026

**Master of Business Administration**

**Duration** 1½ years full-time, 2-4 years part-time

**Campus** City<sup>1</sup>

**Starts** 23 Feb, 4 May, 13 July & 21 Sep 2026

**Postgraduate Diploma in Professional Accounting**

**Duration** 8 months-1 year full-time, part-time available

**Campus** City

**Starts** 2 Mar & 27 Oct 2026

**Postgraduate Diploma in Business Administration**

**Duration** 8 months-1 year full-time, part-time available

**Campus** City<sup>1</sup>

**Starts** 23 Feb, 4 May, 13 July & 21 Sep 2026

**Postgraduate Certificate in Business Studies**

**Duration** ½ year full-time, part-time available

**Campus** City

**Starts** 2 Mar & 27 Oct 2026

**Master of Professional Accounting**

**Duration** 1-1½ years full-time, part-time available

**Campus** City

**Starts** 2 Mar & 27 Oct 2026

**Postgraduate Certificate in Professional Accounting**

**Duration** ½ year full-time, part-time available

**Campus** City

**Starts** 2 Mar & 27 Oct 2026

**Postgraduate Diploma in Applied Finance**

**Duration** 8 months-1 year full-time, part-time available

**Campus** City

**Starts** 2 Mar & 27 Oct 2026

**Master of Applied Finance**

**Duration** 1-1½ years full-time, part-time available

**Campus** City

**Starts** 2 Mar & 27 Oct 2026

**Postgraduate Diploma in Marketing**

**Duration** 8 months-1 year full-time, part-time available

**Campus** City

**Starts** 2 Mar & 27 Oct 2026

**Master of Supply Chain Management**

**Duration** 1-1½ years full-time, part-time available

**Campus** City

**Starts** 2 Mar & 27 Oct 2026

**Postgraduate Diploma in Business Management**

**Duration** 8 months-1 year full-time, part-time available

**Campus** City

**Starts** 2 Mar & 27 Oct 2026

**Master of Marketing**

**Duration** 1-1½ years full-time, part-time available

**Campus** City

**Starts** 2 Mar & 27 Oct 2026

**Master of Business Management**

**Duration** 1-1½ years full-time, part-time available

**Campus** City

**Starts** 2 Mar & 27 Oct 2026

**Postgraduate Diploma in Supply Chain Management**

**Duration** 8 months-1 year full-time, part-time available

**Campus** City

**Starts** 2 Mar & 27 Oct 2026

1. Online study options for business administration are also available. To find out more visit [online.aut.ac.nz](https://online.aut.ac.nz)

WORLD-LEADING RESEARCH

Our world-class researchers work in all major disciplines in business, and in our specialist research centres. At the heart of our research is collaborative engagement with our external stakeholders in business, the professions, government and the community. For example, our researchers have undertaken projects for the Ministry of Business, Innovation and Employment and the Ministry of Women, helping shape social policy directions and decisions.



"A business degree at AUT wasn't just by choice, but by feeling. I had known where I wanted to go from a young age, after watching my mum graduate from AUT. My values of diversity and inclusion aligned with AUT's passion for driving such initiatives. It was a plus that my love for technology was included in the business degree at AUT as well. My Bachelor of Business opened up several creative outlets for me. I was an entrepreneur in my marketing class and then an 'ethical hacker' in my cybersecurity class. I had wanted a degree that did it all, and that was this degree."

**Jennifer Olivia (Olivia) Uhrle**  
Associate Security Consultant, Bastion Security Services  
Master of Business in Information Systems  
Bachelor of Business in Information Systems



"The academics at AUT treat me as a valued department member, and I have a good relationship with the other research students here. We have a WhatsApp group, and exchange ideas and support each other when we meet. I'm also grateful for the opportunities I've been given. I submitted my abstract for AUT's Postgraduate Research Symposium and had a chance to present my work there. I was also able to showcase what I'm working on to the Chartered Institute of Procurement & Supply. AUT has also given me the opportunity to teach other students as a lecturer, which is a great way to familiarise myself with teaching and get on the job training for a future in academia."

**Taichi Arioka**  
Doctor of Philosophy candidate



# COMMUNICATION STUDIES

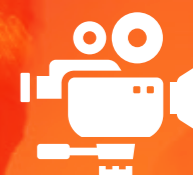
Our communication studies programmes are well-regarded by the industry, and you'll have plenty of opportunities to network with industry leaders thanks to our strong connections with partner organisations and professional bodies like the Public Relations Institute of New Zealand and Commercial Communications Council. As part of your programme you could work on projects for real clients, or complete workplace experience or internships for major industry organisations. To make sure your learning is relevant to your future career, you have access to top facilities and industry-standard equipment, including a screen and TV studio, performance studio, radio station, sound and edit suites, digital media labs, a virtual production studio and a media centre.



Work experience and industry projects in PR, advertising, journalism and more



State-of-the-art radio studio



Cutting-edge TV studios



Scan this QR code for details about courses, where your study could lead and stories about our great graduates and students.



## UNDERGRADUATE STUDY

**Diploma in Arts**

<b>Duration</b>	1 year full-time, part-time available
<b>Campus</b>	City
<b>Starts</b>	23 Feb 2026

**Bachelor of Communication Studies**

- Advertising and Brand Creativity
- Digital Communication
- Journalism
- Public Relations
- Radio and Audio Media
- Screen Production

<b>Duration</b>	3 years full-time
<b>Campus</b>	City
<b>Starts</b>	23 Feb & 13 July 2026

## WORLD-LEADING RESEARCH

Our world-class researchers have expertise across the field of communication studies, including Asia-Pacific media, journalism, media performance, multimodal analysis; online, social and digital media; political economy of communication, popular culture, public relations and radio. We're committed to innovative, critical and creative research that advances knowledge, serves the community, and helps our students become future leaders in the communication and media industry.



"If you know you're interested in learning and working in the media industry but don't know exactly where you'd fit into the broad industry, communication studies is exactly where you'd like to be. You get to be creatively challenged throughout your degree, and it pushes you to deliver high-quality industry standard work. Even if you don't know what area of communication studies you want to specialise in, after the first year you'll start to know what areas of the industry excite you. For me it was discovering the sector of media planning, buying and strategy – it felt like the perfect path for me, blending creativity, research and analysis."

**Dhruvi Kumar**  
Media Assistant, PHD  
Bachelor of Communication Studies in Advertising and Brand Creativity  
with minors in Digital Communication and Marketing

## POSTGRADUATE STUDY

**Postgraduate Certificate in Communication Studies**

<b>Duration</b>	½ year full-time, part-time available
<b>Campus</b>	City
<b>Starts</b>	23 Feb & 13 July 2026

**Postgraduate Diploma in Communication Studies**

- Communication Leadership
- Inclusive Journalism
- Media Innovation

<b>Duration</b>	1 year full-time, part-time available
<b>Campus</b>	City
<b>Starts</b>	23 Feb & 13 July 2026

**Master of Communication Studies**

- Communication Leadership
- Inclusive Journalism
- Media Innovation

<b>Duration</b>	1½ years full-time, part-time available
<b>Campus</b>	City
<b>Starts</b>	23 Feb & 13 July 2026

**Master of Philosophy**

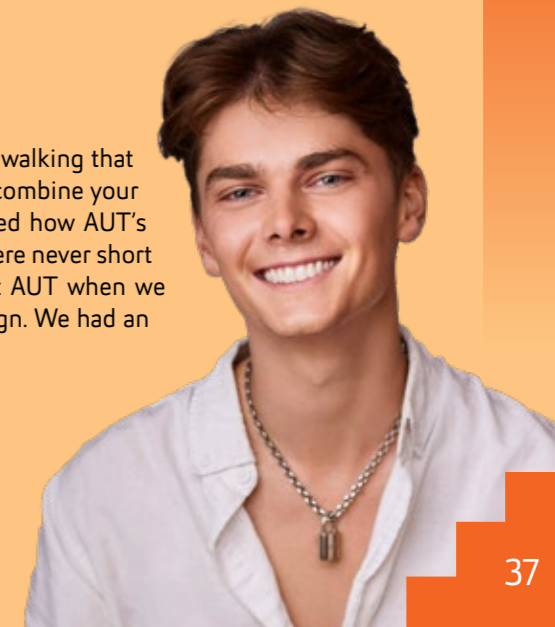
<b>Duration</b>	1 year full-time, part-time available
<b>Campus</b>	City
<b>Starts</b>	2 Feb, 4 May, 6 July & 5 Oct 2026

**Doctor of Philosophy**

<b>Duration</b>	3-6 years
<b>Campus</b>	City
<b>Starts</b>	2 Feb, 4 May, 6 July & 5 Oct 2026

"As a teenager, I'd always watched the Met Gala and had this dream of walking that staircase. It wasn't until I was at AUT that I realised that you really can combine your passions with your career. And look at me now, I live in LA! I just loved how AUT's communications degree let our creative imagination run wild and we were never short of moments to feel inspired. I particularly remember my third year at AUT when we were able to get involved with a local charity to run a mock PR campaign. We had an absolute blast as it felt the closest to being in the field."

**Ben Fitchett**  
Creative Strategist, Sling & Stone, Los Angeles  
Bachelor of Communication Studies in Public Relations  
with a minor in Creative Entrepreneurship



# CREATIVE TECHNOLOGIES

Use technology and creativity to solve the complex challenges of our time, and learn to think outside the box with our programmes in creative technologies. At AUT, you'll experiment with things like augmented reality, robotics, gaming development tools, digital fabrication and sound engineering within a collaborative project-based studio environment. Your knowledge will be in demand within a wide range of cutting-edge industries. The world is changing fast, and people with imagination, advanced technological knowledge and entrepreneurial skills will be the ones to shape it.



Entrepreneurial focused degree structure



Mixed discipline degree



Creative approach to technology



Scan this QR code for details about courses, where your study could lead and stories about our great graduates and students.



## POSTGRADUATE STUDY

**Postgraduate Certificate in Creative Technologies**

**Duration** ½ year full-time, part-time available

**Campus** City

**Starts** 23 Feb 2026

**Master of Creative Technologies**

**Duration** 1½ years full-time, part-time available

**Campus** City

**Starts** 23 Feb 2026

**Master of Philosophy**

**Duration** 1 year full-time, part-time available

**Campus** City

**Starts** 2 Feb, 4 May, 6 July & 5 Oct 2026

**Doctor of Philosophy**

**Duration** 3–6 years

**Campus** City

**Starts** 2 Feb, 4 May, 6 July & 5 Oct 2026

## WORLD-LEADING RESEARCH

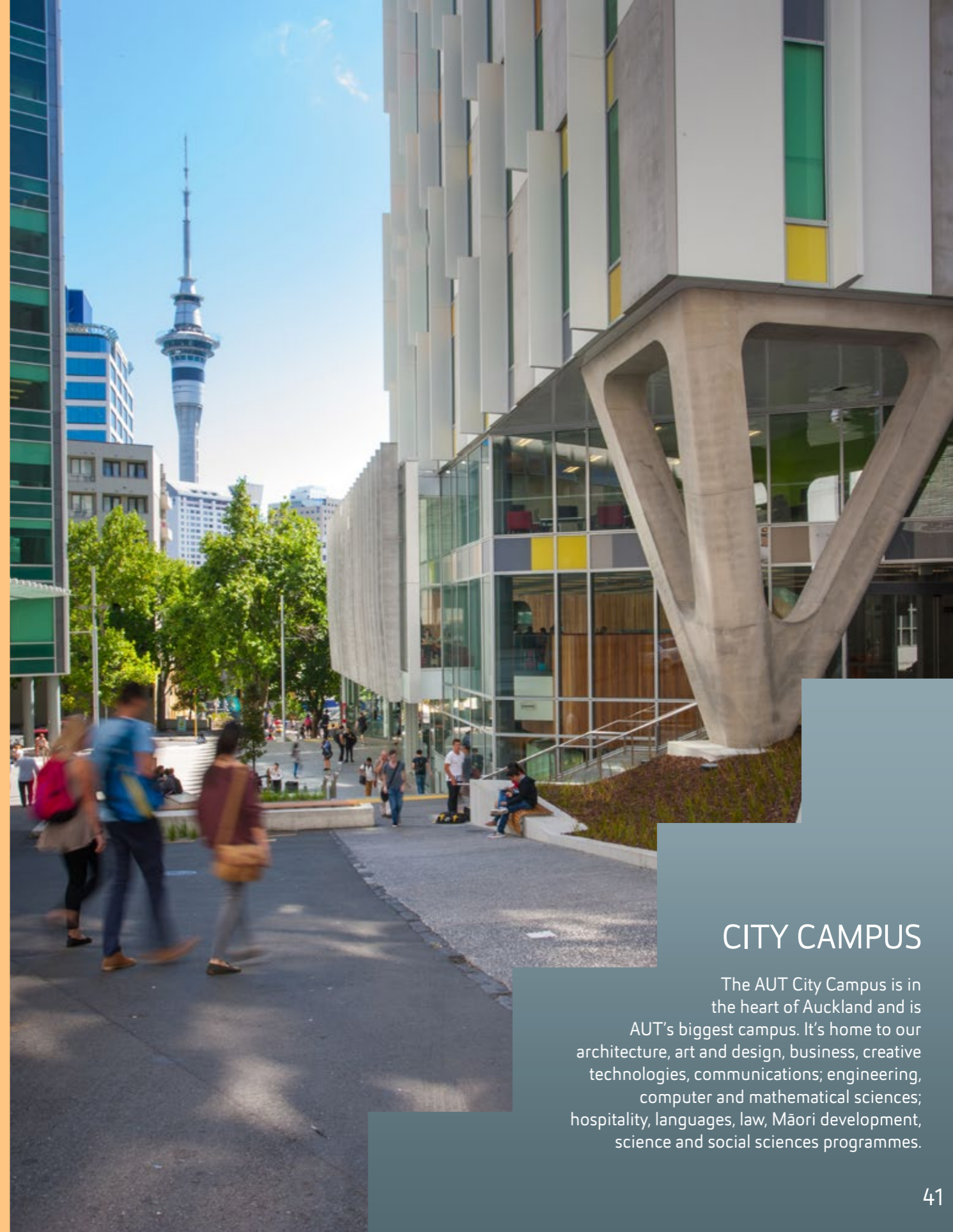
Our world-class labs are hubs for sharing expertise and research outcomes, and include the 3D Lab and Motion Capture Lab. We're proud of our strong partnerships with businesses and the community, and our researchers and postgraduate students often collaborate with industry organisations on research or other projects.



"The biggest reasons for coming back to AUT for my doctoral studies were the staff, and AUT's practical research approach and strong innovative, future-thinking mindset. I knew that at AUT I'd be surrounded by academics who would understand not only my mindset, but also be able to push the research to new innovative heights. I love having the time to really focus on what the problem or project is, and carefully think about what tools, questions or actions I need to solve that problem. And in that time, it's the discussions with the academics and other PhD students that take my PhD journey to places I might not have thought of before."

**Claudine Nalesu**

**Doctor of Philosophy candidate**  
**Master of Creative Technologies**  
**Bachelor of Creative Technologies**



## CITY CAMPUS

The AUT City Campus is in the heart of Auckland and is AUT's biggest campus. It's home to our architecture, art and design, business, creative technologies, communications; engineering, computer and mathematical sciences; hospitality, languages, law, Māori development, science and social sciences programmes.



# EDUCATION

At AUT you'll find all the support, encouragement and inspiration you'll need to develop an outstanding career in education. Our widely regarded education programmes focus on academic knowledge and provide you with invaluable practical experience in teaching and education, through work placements in schools or early learning services. Our postgraduate and research students work in collaboration with academic staff who are internationally known as experts in the fields of pedagogy, education policy, e-learning and educational leadership.



Expert lecturers in specialist education disciplines and education research



UP TO  
**25**  
WEEKS

of professional practice – many of our students are offered jobs during their placements



Collaborative and interactive classes



Scan this QR code for details about courses, where your study could lead and stories about our great graduates and students.



## UNDERGRADUATE STUDY

Certificate in Arts	
Duration	½ year full-time, part-time available
Campus	City
Starts	23 Feb & 13 July 2026

Diploma in Arts	
Duration	1 year full-time, part-time available
Campus	City
Starts	23 Feb 2026

Bachelor of Education ([Specialty] Teaching) <sup>1,2</sup>	
	<ul style="list-style-type: none"> <li>• Early Childhood Teaching</li> <li>• Primary Teaching</li> </ul>
Duration	3 years full-time, part-time available
Campus	North & South
Starts	23 Feb 2026

Bachelor of Arts	
	<ul style="list-style-type: none"> <li>• Education</li> </ul>
Duration	3 years full-time, part-time available
Campus	City
Starts	23 Feb & 13 July 2026

Graduate Certificate in Arts	
Duration	½ year full-time, part-time available
Campus	City & North
Starts	23 Feb & 13 July 2026

Graduate Diploma in Arts	
Duration	1 year full-time, part-time available
Campus	City & North
Starts	23 Feb & 13 July 2026

Graduate Diploma in Secondary Teaching <sup>2</sup>	
Duration	1 year full-time
Campus	City
Starts	23 Feb & 13 July 2026

Bachelor of Arts & Bachelor of Business conjoint programme	
Duration	4 years full-time, part-time available
Campus	City <sup>3</sup>
Starts	23 Feb & 13 July 2026

Bachelor of Arts & Bachelor of Computer and Information Sciences conjoint programme	
Duration	4 years full-time, part-time available
Campus	City
Starts	23 Feb & 13 July 2026

## WORLD-LEADING RESEARCH

We believe in high-quality research that has impact, and have world-class researchers and research strengths across education. Our research-active staff are widely known for their expertise in all areas of the education sector – from education policy, the changing nature of public education and mindfulness for teachers, to educational leadership and leadership development, equity, culture and diversity, and the philosophy of education.



“AUT has a high calibre of lecturers within the School of Education. I found the lecturers to be knowledgeable, empathetic, provocative and helpful. The courses encouraged us to step out of our comfort zones and engage with everyone. But the biggest highlight for me were the friendships and connections I made throughout my time at AUT. Giving back has always been important in my life, and I think that through my love of te taiao, hākinakina and hauora, I can offer young taura something that may not have been previously available in their lives.”

**Arana Rakena**

*Ngāpuhi*

Health, Physical Education and Te Reo Māori Teacher, Rosmini College

Graduate Diploma in Secondary Teaching

Bachelor of Sport and Recreation in Health and Physical Education

## POSTGRADUATE STUDY

Bachelor of Arts (Honours)	
Duration	1 year full-time, part-time available
Campus	North & South
Starts	23 Feb & 13 July 2026

Postgraduate Certificate in Education	
	<ul style="list-style-type: none"> <li>• Educational Leadership</li> </ul>
Duration	½ year full-time, part-time available
Campus	City, North & South <sup>4</sup>
Starts	23 Feb & 13 July 2026

Postgraduate Diploma in Education	
	<ul style="list-style-type: none"> <li>• Educational Leadership</li> </ul>
Duration	1 year full-time, part-time available
Campus	City, North & South <sup>4</sup>
Starts	23 Feb & 13 July 2026

Postgraduate Diploma in Teaching and Learning <sup>2</sup>	
	<ul style="list-style-type: none"> <li>• Early Childhood Teaching</li> <li>• Primary Teaching</li> </ul>
Duration	1 year full-time
Campus	North & City
Starts	9 Feb & 6 Jul 2026 <sup>5</sup>

Master of Education	
	<ul style="list-style-type: none"> <li>• Educational Leadership</li> </ul>
Duration	1½ years full-time, part-time available
Campus	City, North & South <sup>4</sup>
Starts	23 Feb & 13 July 2026

Master of Teaching and Learning <sup>2</sup>	
	<ul style="list-style-type: none"> <li>• Early Childhood Teaching</li> <li>• Primary Teaching</li> </ul>
Duration	1 year full-time
Campus	North
Starts	9 Feb & 6 Jul 2026 <sup>5</sup>

Master of Philosophy	
Duration	1 year full-time, part-time available
Campus	North
Starts	2 Feb, 4 May, 6 July & 5 Oct 2026

Doctor of Philosophy	
Duration	3–6 years
Campus	North
Starts	2 Feb, 4 May, 6 July & 5 Oct 2026

Doctor of Education	
Duration	3 years full-time, 6 years part-time (coursework is 2 years part-time plus a thesis – full-time or part-time options)
Campus	City
Starts	23 Feb 2026

1. Not open for international applicants without NCEA.
2. This is a teaching qualification and prepares you to become a teacher.
3. Business courses also available at the South Campus.
4. Online study options for educational leadership are also available. To find out more visit [online.aut.ac.nz](https://online.aut.ac.nz)
5. July start date applies to the Early Childhood Teaching specialisation only.

“My aspiration to instil curiosity and a love of learning in my students and leave a lasting legacy of knowledge motivated me to switch careers and take up the Master of Teaching and Learning at AUT. The highlights of my time at AUT included the warm, welcoming, unbiased and multicultural environment of AUT, and all the support from my lecturers, peers and the student services. AUT is a haven that you can rely on for your career and future. The support AUT renders to its students is unmatched – they bring to you a world-class education that will not only prepare you for your career but will also equip you with skills to handle the complexities of life.”

**Maliha Tazmeen**

Early Childhood Education Teacher, Alten Road Early Childhood Centre

Master of Teaching and Learning





# ENGINEERING, COMPUTER & MATHEMATICAL SCIENCES

Study engineering, computing or mathematical sciences and play a leading role in the technological, social and economic development of the world today. Our teaching and research staff are among the best in New Zealand and internationally. Our computing, software and engineering programmes have the highest standards in student experience, and our alumni are highly sought-after by employers around the world. With access to outstanding facilities you'll be equipped to make industry-leading discoveries in collaboration with classmates, research staff and partner organisations.



International recognition through Engineering New Zealand accreditation, Sydney and Washington Accords



State-of-the-art Engineering, Computer and Mathematical Sciences building



Student access to high-tech labs network



Scan this QR code for details about courses, where your study could lead and stories about our great graduates and students.



## UNDERGRADUATE STUDY

**Diploma in Computer and Information Sciences**

**Duration** 1 year full-time, part-time available  
**Campus** City  
**Starts** 23 Feb & 13 July 2026

**Diploma in Engineering**

**Duration** 1 year full-time, part-time available  
**Campus** City  
**Starts** 23 Feb & 13 July 2026

**Bachelor of Computer and Information Sciences**

- Computer Science
- Data Science
- Digital Services
- Networks and Cybersecurity
- Software Development

**Duration** 3 years full-time, part-time available  
**Campus** City  
**Starts** 23 Feb & 13 July 2026

**Bachelor of Engineering (Honours)**

- Architectural Engineering
- Civil Construction Engineering
- Electrical and Electronic Engineering
- Maritime Engineering (Naval Architecture, Ocean Engineering)<sup>1</sup>
- Mechanical Engineering
- Mechatronics Engineering
- Software Engineering

**Duration** 4 years full-time, part-time available  
**Campus** City  
**Starts** 23 Feb & 13 July 2026

**Bachelor of Engineering Technology**

- Electrical and Electronic Engineering
- Mechanical Engineering

**Duration** 3 years full-time, part-time available  
**Campus** City  
**Starts** 23 Feb & 13 July 2026

**Bachelor of Science**

- Analytics
- Mathematical Modelling and Computation

**Duration** 3 years full-time, part-time available  
**Campus** City  
**Starts** 23 Feb & 13 July 2026

**Bachelor of Arts & Bachelor of Computer and Information Sciences conjoint programme**

**Duration** 4 years full-time, part-time available  
**Campus** City  
**Starts** 23 Feb & 13 July 2026

**Bachelor of Business & Bachelor of Computer and Information Sciences conjoint programme**

**Duration** 4 years full-time, part-time available  
**Campus** City<sup>2</sup>  
**Starts** 23 Feb & 13 July 2026

**Graduate Certificate in Computer and Information Sciences**

**Duration** ½ year full-time, 1 year part-time  
**Campus** City  
**Starts** 23 Feb & 13 July 2026

**Graduate Diploma in Computer and Information Sciences**

**Duration** 1 year full-time, part-time available  
**Campus** City  
**Starts** 23 Feb & 13 July 2026

**Graduate Certificate in Science**

**Duration** ½ year full-time, part-time available  
**Campus** City  
**Starts** 23 Feb & 13 July 2026

**Graduate Diploma in Science**

**Duration** 1 year full-time, part-time available  
**Campus** City  
**Starts** 23 Feb & 13 July 2026

1. The Maritime Engineering majors are only available to New Zealand citizens.  
 2. Business courses are also available at the South Campus

**WORLD-LEADING RESEARCH**

Research is our strength, and we have a strong focus on research in collaboration with our many industry partners. Our research expertise ranges from artificial intelligence to robotics and data science to power and energy engineering. As a postgraduate student, you'll learn from globally renowned academic staff and have access to our world-class research institutes and facilities.

Our research centres, groups and initiatives include:

**Data science**

- Data Science Research Centre
- Mathematical Modelling and Analytics Research Centre
- High Performance Computing Research Laboratory

**Intelligent systems**

- Institute of Robotics and Vision
- Networking and Security Research Centre
- Software Engineering Research Group
- Ubiquitous and Web Computing
- Wireless and Intelligent Systems Engineering

**Health technologies**

- Knowledge, Engineering and Discovery Research Innovation
- Institute of Biomedical Technologies

**Energy**

- Centre of Future Power and Energy Research
- Thermodynamic Engineering Research and Applications Lab

**Materials science**

- Smart Systems, Materials and Manufacturing Research Centre

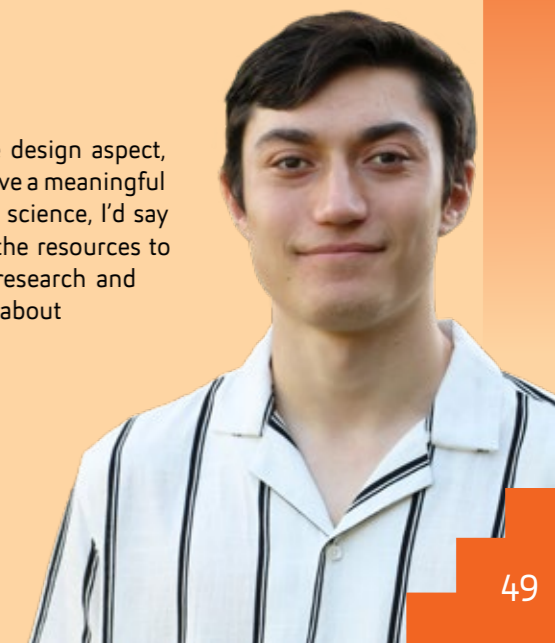
"I originally decided to study programming because I liked the game design aspect, however there are many other ways computer science enables you to leave a meaningful impact in a rapidly growing world. If you're into the field of computer science, I'd say AUT definitely has many knowledgeable experts in the field, and has the resources to assist your studies and personal projects. I particularly enjoyed our research and development project in my final year. My group wrote an academic paper about our project, which got accepted by the IEEE CSDE 2023 conference in Fiji. It's cool to see that the work you do at university can have a real positive impact on the world!"

**Connor Winiata**

*Ngāti Ranginui*

**Data and AI Graduate, Fonterra**

**Bachelor of Computer and Information Sciences in Data Science**





## POSTGRADUATE STUDY

**Postgraduate Certificate in Computer and Information Sciences**

**Duration** ½ year full-time, part-time available  
**Campus** City  
**Starts** 23 Feb & 13 July 2026

**Postgraduate Diploma in Computer and Information Sciences**

**Duration** 1 year full-time, part-time available  
**Campus** City  
**Starts** 23 Feb & 13 July 2026

**Master of Computer and Information Sciences**

**Duration** 1½ years full-time, part-time available  
**Campus** City  
**Starts** 23 Feb & 13 July 2026

**Postgraduate Certificate in Science**

**Duration** ½ year full-time, part-time available  
**Campus** City  
**Starts** 23 Feb & 13 July 2026

**Postgraduate Diploma in Science**

**Duration** 1 year full-time, part-time available  
**Campus** City  
**Starts** 23 Feb & 13 July 2026

**Master of Science**

**Duration** 1½ years full-time, part-time available  
**Campus** City  
**Starts** 23 Feb & 13 July 2026

**Master of Analytics**

**Duration** 1½ years full-time, part-time available  
**Campus** City  
**Starts** 23 Feb & 13 July 2026

**Master of Cyber Security and Digital Forensics**

**Duration** 1½ years full-time, part-time available  
**Campus** City  
**Starts** 23 Feb & 13 July 2026

**Postgraduate Certificate in Engineering**

**Duration** ½ year full-time, part-time available  
**Campus** City  
**Starts** 23 Feb & 13 July 2026

**Postgraduate Diploma in Engineering**

**Duration** 1 year full-time, part-time available  
**Campus** City  
**Starts** 23 Feb & 13 July 2026

**Master of Engineering**

**Duration** 1-1½ years full-time, part-time available  
**Campus** City  
**Starts** 23 Feb & 13 July 2026

**Master of Construction Management**

**Duration** 1 year full-time, part-time available  
**Campus** City & online study  
**Starts** 23 Feb & 13 July 2026

**Master of Engineering Project Management**

**Duration** 1 year full-time, part-time available  
**Campus** City & online study  
**Starts** 23 Feb & 13 July 2026

**Master of IT Project Management**

**Duration** 1 year full-time, part-time available  
**Campus** City  
**Starts** 23 Feb & 13 July 2026

**Master of Philosophy**

**Duration** 1 year full-time, part-time available  
**Campus** City  
**Starts** 2 Feb, 4 May, 6 July & 5 Oct 2026

**Doctor of Philosophy**

**Duration** 3-6 years  
**Campus** City & South  
**Starts** 2 Feb, 4 May, 6 July & 5 Oct 2026



"As AUT graduates we're highly regarded in the industry for our practical approach to solutions, our ability to apply common sense to complex real-world issues, our ability to communicate with and present to a wide spectrum of stakeholders, and – most importantly – our emphasis on the people aspects when interpreting technical problems. I can still vividly remember the awesome lecturers using real-world examples to illustrate why materials behave differently under compression or tension, I can memorise writing the PID control loops to fly a drone and know how to transform programming scripts into layers of an object for 3D printing, which I had then made at the AUT 3D printer."

**Steven Wang**  
 Building Services Team Leader, GHD Ltd  
 Bachelor of Engineering (Honours) in Mechanical Engineering (First Class)

"I decided to pursue a degree in data science because I had been following sports and the statistical analysis of player performances against other metrics sparked my interest. I'm excited about understanding how this works, and it's interesting to apply the skills from this degree to the sporting analytical world. My final-year project – Moneyball for Motorsport – gave me the opportunity to delve deeper into sports analytics. Applying my knowledge to practical scenarios was so rewarding! I enjoyed working on a real-life scenario for a company and gained experiences that will help me throughout my future. I could see myself as a sports analyst or a data analyst in my future career."

**Monalisa Verma**  
 Master of Analytics student  
 Bachelor of Computer and Information Sciences in Data Science



# HEALTH SCIENCES

AUT is one of the biggest health science education providers in New Zealand. We draw on research and industry practice to prepare you for a rewarding career in this growing sector, and our graduates are in demand around the world. Thanks to our strong connections with organisations across the health sector, you'll have lots of opportunities to practise what you've learnt during your clinical placements or treat patients in our on-campus clinics. Our academic staff and postgraduate students often conduct groundbreaking research to improve our understanding of health and environmental issues, generate new products and technologies, and enhance professional practice.



NZ's fastest growing and most diverse health educator



IN NEW ZEALAND for nursing



8 health clinic services with industry standard equipment



Scan this QR code for details about courses, where your study could lead and stories about our great graduates and students.



## UNDERGRADUATE STUDY

**Diploma in Paramedic Science**

**Duration** 1 year full-time  
**Campus** South  
**Starts** 23 Feb & 13 July 2026

**Bachelor of Health Science**

- Individual Pathway <sup>(N) (S)</sup>
- Case Management <sup>(N)</sup>
- Counselling <sup>(S)</sup>
- Health Management <sup>(S)</sup>
- Midwifery <sup>(D) (S)</sup>
- Nursing <sup>(N)</sup>
- Occupational Therapy <sup>(N)</sup>
- Oral Health <sup>(N)</sup>
- Paramedicine <sup>(S)</sup>
- Perioperative Practice <sup>(S)</sup>
- Physiotherapy <sup>(N)</sup>
- Podiatry <sup>(N)</sup>
- Psychology <sup>(N)</sup>
- Public and Environmental Health <sup>(S)</sup>

**Duration** 3 years full-time (4 years full-time for Midwifery and Physiotherapy), part-time available in some pathways

**Campus** North & South  
**Starts** 23 Feb & 13 July 2026

**Bachelor of Business & Bachelor of Health Science in Psychology conjoint programme**

**Duration** 4½ years full-time, part-time available  
**Campus** City & North<sup>1</sup>  
**Starts** 23 Feb & 13 July 2026

**Graduate Certificate in Health Science**

**Duration** ½ year full-time, part-time available  
**Campus** North & South  
**Starts** 23 Feb & 13 July 2026

**Graduate Diploma in Health Science**

**Duration** 1 year full-time, part-time available  
**Campus** North & South  
**Starts** 23 Feb & 13 July 2026

**Graduate Diploma in Psychotherapy Studies**

**Duration** 1 year full-time, part-time available  
**Campus** North  
**Starts** 23 Feb 2026

## KEY

- <sup>(C)</sup> City Campus
- <sup>(N)</sup> North Campus
- <sup>(S)</sup> South Campus
- <sup>(D)</sup> Distance learning

## POSTGRADUATE STUDY

**Bachelor of Health Science (Honours)**

**Duration** 1 year full-time, part-time available  
**Campus** North  
**Starts** 23 Feb 2026

**Bachelor of Health Science (Physiotherapy) (Honours)**

**Duration** 4 years full-time  
**Campus** North  
**Starts** 13 July 2026

**Postgraduate Certificate in Health Science**

- Acupuncture <sup>(N)</sup>
- Child Health <sup>(N) (S)</sup>
- Health Care Ethics <sup>(S)</sup>
- Leadership and Management <sup>(N)</sup>
- Māori Health <sup>(S)</sup>
- Mental Health and Addictions <sup>(N)</sup>
- Midwifery <sup>(S)</sup>
- Older Adult: Health and Wellness <sup>(N)</sup>
- Podiatry <sup>(N)</sup>
- Rehabilitation <sup>(N)</sup>
- Resuscitation <sup>(S)</sup>
- Violence and Trauma Studies <sup>(S)</sup>

**Duration** ½ year full-time, part-time available  
**Campus** North & South  
**Starts** 23 Feb & 13 July 2026

**Postgraduate Certificate in Advanced Nursing Practice**

**Duration** ½ year full-time, part-time available  
**Campus** North  
**Starts** 23 Feb & 13 July 2026

**Postgraduate Diploma in Registered Nurse Prescribing**

**Duration** 1 year full-time, part-time available  
**Campus** North  
**Starts** 23 Feb & 13 July 2026

**Postgraduate Diploma in Health Science**

- Acupuncture <sup>(N)</sup>
- Advanced Nursing Practice <sup>(N)</sup>
- Child Health <sup>(N) (S)</sup>
- Health Care Ethics <sup>(S)</sup>
- Leadership and Management <sup>(N)</sup>
- Māori Health <sup>(S)</sup>
- Mental Health and Addictions <sup>(N)</sup>
- Midwifery <sup>(S)</sup>
- Musculoskeletal Physiotherapy <sup>(N)</sup>
- Older Adult: Health and Wellness <sup>(N)</sup>
- Paramedicine <sup>(S)</sup>
- Podiatry <sup>(N)</sup>
- Rehabilitation <sup>(N)</sup>
- Violence and Trauma Studies <sup>(S)</sup>

**Duration** 1 year full-time, part-time available  
**Campus** North & South  
**Starts** 23 Feb & 13 July 2026

**Master of Health Practice**

- Acupuncture <sup>(N)</sup>
- Child Health <sup>(N) (S)</sup>
- Māori Health <sup>(S)</sup>
- Mental Health and Addictions <sup>(N)</sup>
- Midwifery <sup>(S)</sup>
- Musculoskeletal Physiotherapy <sup>(N)</sup>
- Nursing <sup>(N)</sup>
- Paramedicine <sup>(S)</sup>
- Podiatry <sup>(N)</sup>
- Rehabilitation <sup>(N)</sup>
- Violence and Trauma Studies <sup>(S)</sup>

**Duration** 1½ years full-time, part-time available  
**Campus** North & South  
**Starts** 23 Feb & 13 July 2026

**Master of Health Science**

- Advanced Nursing Practice
- Podiatry
- Psychology

**Duration** 2 years full-time, part-time available  
**Campus** North  
**Starts** 23 Feb & 13 July 2026

**Master of Nursing Science**

**Duration** 2 years full-time  
**Campus** South  
**Starts** 27 Jan 2026

**Master of Physiotherapy Practice**

**Duration** 2 years full-time  
**Campus** North  
**Starts** 2 Feb 2026

"I loved that AUT presented a rigorous curriculum and comprehensive preparation for a rewarding career in oral health. The programme's focus on dental hygiene, therapy, preventive care and patient education aligned perfectly with my career aspirations. AUT, including the dental clinics and simulation labs, offered unparalleled opportunities for hands-on learning and skill development. Treating whānau who have never received dental education or care before, and then seeing the immediate improvement in their oral health and confidence, is incredibly rewarding. It solidifies my belief in early intervention and patient education as cornerstones of effective oral health therapy. Working within our local communities and networking with other providers to ensure a wrap-around service for whānau has been gratifying."

**Shannel Yorke**  
 Tapuika, Ngāpuhi

**Oral Health Therapist, Te Manu Toroa Kaupapa Māori Dental Services**  
 Bachelor of Health Science (Oral Health)

1. Business courses offered at the City or South Campus; health courses at the North Campus.



## POSTGRADUATE STUDY CONTINUED

**Postgraduate Diploma in Counselling Psychology**

Duration 1 year full-time  
 Campus North  
 Starts 23 Feb 2026

**Master of Psychotherapy**

Duration 2 years full-time, part-time available  
 Campus North  
 Starts 23 Feb 2026

**Postgraduate Certificate in Disaster Risk Management and Development**

Duration ½ year full-time, part-time available  
 Campus South  
 Starts 23 Feb & 13 July 2026

**Postgraduate Diploma in Disaster Risk Management and Development**

Duration 1 year full-time, part-time available  
 Campus South  
 Starts 23 Feb & 13 July 2026

**Master of Disaster Risk Management and Development**

Duration 1½ years full-time, part-time available  
 Campus South  
 Starts 23 Feb & 13 July 2026

**Postgraduate Certificate in Public Health**

Duration ½ year full-time, part-time available  
 Campus South  
 Starts 23 Feb 2026

**Postgraduate Diploma in Public Health**

Duration 1 year full-time, part-time available  
 Campus South  
 Starts 23 Feb & 13 July 2026

**Master of Public Health**

Duration 2 years full-time, part-time available  
 Campus South  
 Starts 23 Feb & 13 July 2026

**Master of Philosophy**

Duration 1 year full-time, part-time available  
 Campus North & South  
 Starts 2 Feb, 4 May, 6 July & 5 Oct 2026

**Doctor of Philosophy**

Duration 3-6 years  
 Campus North & South  
 Starts 2 Feb, 4 May, 6 July & 5 Oct 2026

**Doctor of Health Science**

Duration 3 years full-time, 6 years part-time  
 Campus South  
 Starts 2 Feb 2026

## WORLD-LEADING RESEARCH

AUT is home to world-leading researchers across the field of health sciences. We have strong connections with the health sector and deliver leading research in health sciences.

For example, we've led the world's largest study of problem gambling treatments, run New Zealand's only longitudinal study of Pacific Island families and created an award-winning app to assess people's stroke risk.

Our research centres and groups include:

- Centre for Active Ageing
- Centre for Interdisciplinary Trauma Research
- Centre for Midwifery and Women's Health Research
- Centre for Person Centred Research
- Child and Youth Health Research Centre
- Gambling and Addictions Research Centre
- Health and Rehabilitation Research Institute
- Institute of Biomedical Technologies
- Migrant and Refugee Health Research Centre
- National Centre for Interprofessional Education and Collaborative Practice
- National Institute of Stroke and Applied Neurosciences
- Pacific Health Research Centre
- Public Health and Mental Health Research Institute
- Taupua Waiora Research Centre
- Traumatic Brain Injury Network



"My journey to graduating was not your average pathway; it was full of stops and starts, exemption applications, withdrawing and changing courses. Throughout all of this, I was never judged for having a non-traditional university pathway; I was always encouraged and supported. I'll be forever grateful to my lecturers and programme leaders for their support throughout my studies – they kept me striving for my end goal. What I love most about my work now is seeing the progress my clients make with their rehabilitation. I'm responsible for managing the claims of our serious injury clients; people who have suffered spinal cord injuries or traumatic brain injuries. I gain so much from this work."

**Melissa Morris**  
 Recovery Partner, ACC  
 Bachelor of Health Science  
 with minors in Case Management and Health Promotion

"The other students were one of the highlights for me. As this was then the only physiotherapy degree offered in the North Island, lots of people travelled to Auckland to study and these became some of my best mates over the years of study. It was pretty cool to be taught by a team of legends, some with worldwide status. I'm also proud of receiving the AUT ASICS Research Prize and the Sports and Exercise Physiotherapy New Zealand Research Award for my final-year research project. What I love most about my work now is being involved in exercise-based rehabilitation, specifically the ability to objectively test athletes and injured populations, and apply good rehabilitation programmes to see improvements over time."

**David Lalor**  
 Physiotherapist, Axis Sports Medicine  
 Postgraduate Diploma in Health Science student  
 Bachelor of Health Science (Physiotherapy)





# HOSPITALITY, TOURISM & EVENTS

Study hospitality, tourism and event management with us, and you'll be well-prepared for a career that can take you anywhere in the world to create experiences that make a lasting impact on people. The Shanghai Ranking places us 40th in the world and QS ranks us in the top 100 globally. Our tourism programmes are accredited by the United Nations World Tourism Organization (UNWTO) for higher tourism education, training and research programmes. You'll be taught by academic staff who are globally known as experts in their fields, and have access to our industry-standard facilities. You'll also have lots of opportunities to apply your learning in the industry, or perhaps even gain international experience as part of your studies, including at our partner institution Institut Lyfe in France.



**TOP  
40**  
**WORLDWIDE**  
for Hospitality & Leisure  
Management



Massive industry-wide  
connections in hospitality  
and tourism



Huge opportunities for workplace  
experience and international  
study exchanges



Scan this QR code for details  
about courses, where your study  
could lead and stories about our  
great graduates and students.



## UNDERGRADUATE STUDY

**Certificate in Arts**

Duration ½ year full-time,  
part-time available  
Campus City  
Starts 23 Feb & 13 July 2026

**Diploma in Arts**

Duration 1 year full-time,  
part-time available  
Campus City  
Starts 23 Feb 2026

**Diploma in Culinary Arts**

Duration 2 years full-time  
Campus City  
Starts 23 Feb & 13 July 2026

**Diploma in Pâtisserie**

Duration 2 years full-time  
Campus City  
Starts 23 Feb 2026

**Bachelor of Arts**

- Culinary Arts
- Event Management
- Global Tourism

Duration 3 years full-time,  
part-time available  
Campus City  
Starts 23 Feb & 13 July 2026

**Graduate Certificate in Arts**

Duration ½ year full-time,  
part-time available  
Campus City  
Starts 23 Feb & 13 July 2026

**Graduate Diploma in Arts**

Duration 1 year full-time,  
part-time available  
Campus City  
Starts 23 Feb & 13 July 2026

**Bachelor of International  
Hospitality Management**

- Hospitality Enterprise
- Hospitality Management

Duration 3 years full-time,  
part-time available  
Campus City  
Starts 23 Feb & 13 July 2026

**Graduate Certificate in  
International Hospitality  
Management**

Duration ½ year full-time,  
part-time available  
Campus City  
Starts 23 Feb & 13 July 2026

**Graduate Diploma in  
International Hospitality  
Management**

Duration 1 year full-time,  
part-time available  
Campus City  
Starts 23 Feb & 13 July 2026

**Bachelor of Arts & Bachelor  
of Business conjoint  
programme**

Duration 4 years full-time,  
part-time available  
Campus City<sup>1</sup>  
Starts 23 Feb & 13 July 2026

**Bachelor of Arts &  
Bachelor of Computer  
and Information Sciences  
conjoint programme**

Duration 4 years full-time,  
part-time available  
Campus City  
Starts 23 Feb & 13 July 2026

**Bachelor of Business &  
Bachelor of International  
Hospitality Management  
conjoint programme**

Duration 4 years full-time,  
part-time available  
Campus City<sup>1</sup>  
Starts 23 Feb & 13 July 2026

1. Business courses also available at the South Campus

**WORLD-LEADING RESEARCH**

Our research aims to have a social impact for a more hospitable and sustainable future – from contributing to sustainable food systems and sustainable events, to championing accessible and inclusive tourism and hospitality. As a postgraduate student you'll work with academic staff who focus on delivering innovative solutions for the hospitality and tourism industry and have been involved in research projects across the globe.

"Gastronomy is a programme that not many universities offer in this region of the world, and I liked that AUT's Master of Gastronomy is based in Auckland; a culturally diverse city with therefore a culturally diverse food scene. In my studies so far, I've enjoyed the student-driven approach in class. The field trips to businesses and organisations that are relevant to gastronomy concepts are a great practical application of the theory we learn. I've also found the student services on campus to be useful as an international student unfamiliar with the local education system. In addition to my studies I'm also working towards a Beyond AUT Award and volunteering at the Pacific Food Lab – Aotearoa."

**Sophie Mok**  
Master of Gastronomy student

"AUT is well-regarded for its Master of International Hospitality Management, particularly due to its highly knowledgeable lecturers who have both expertise and direct industry experience. The lecturers and teaching assistants are always willing to answer any questions I have, are happy to meet in person and are very responsive via email. This gives me confidence that, if I encounter any challenges or difficulties with assignments, I have the support I need. Another team I appreciate is the online librarian team. Whenever I search the AUT library, they're the first people I reach out to for advice and consultation on the articles and books I need for my studies. They consistently provide me with the helpful information I'm looking for."

**Sumonman Buasak (Anna)**  
Master of International Hospitality Management student



## POSTGRADUATE STUDY

**Bachelor of Arts (Honours)**

- Global Tourism
- International Hospitality Management

Duration 1 year full-time,  
part-time available

Campus City

Starts 23 Feb & 13 July 2026

**Postgraduate Certificate in Gastronomy**

Duration ½ year full-time,  
part-time available

Campus City

Starts 23 Feb & 13 July 2026

**Postgraduate Diploma in Gastronomy**

Duration 1 year full-time,  
part-time available

Campus City

Starts 23 Feb & 13 July 2026

**Master of Gastronomy**

Duration 1½ years full-time,  
part-time available

Campus City

Starts 23 Feb & 13 July 2026

**Postgraduate Certificate in International Hospitality Management**

Duration ½ year full-time,  
part-time available

Campus City

Starts 23 Feb & 13 July 2026

**Postgraduate Diploma in International Hospitality Management**

Duration 1 year full-time,  
part-time available

Campus City

Starts 23 Feb & 13 July 2026

**Master of International Hospitality Management**

Duration 1½ years full-time,  
part-time available

Campus City

Starts 23 Feb & 13 July 2026

**Postgraduate Certificate in International Tourism Management**

Duration ½ year full-time,  
part-time available

Campus City

Starts 23 Feb & 13 July 2026

**Postgraduate Diploma in International Tourism Management**

Duration 1 year full-time,  
part-time available

Campus City

Starts 23 Feb & 13 July 2026

**Master of International Tourism Management**

Duration 1½ years full-time,  
part-time available

Campus City

Starts 23 Feb & 13 July 2026

**Master of Philosophy**

Duration 1 year full-time,  
part-time available

Campus City

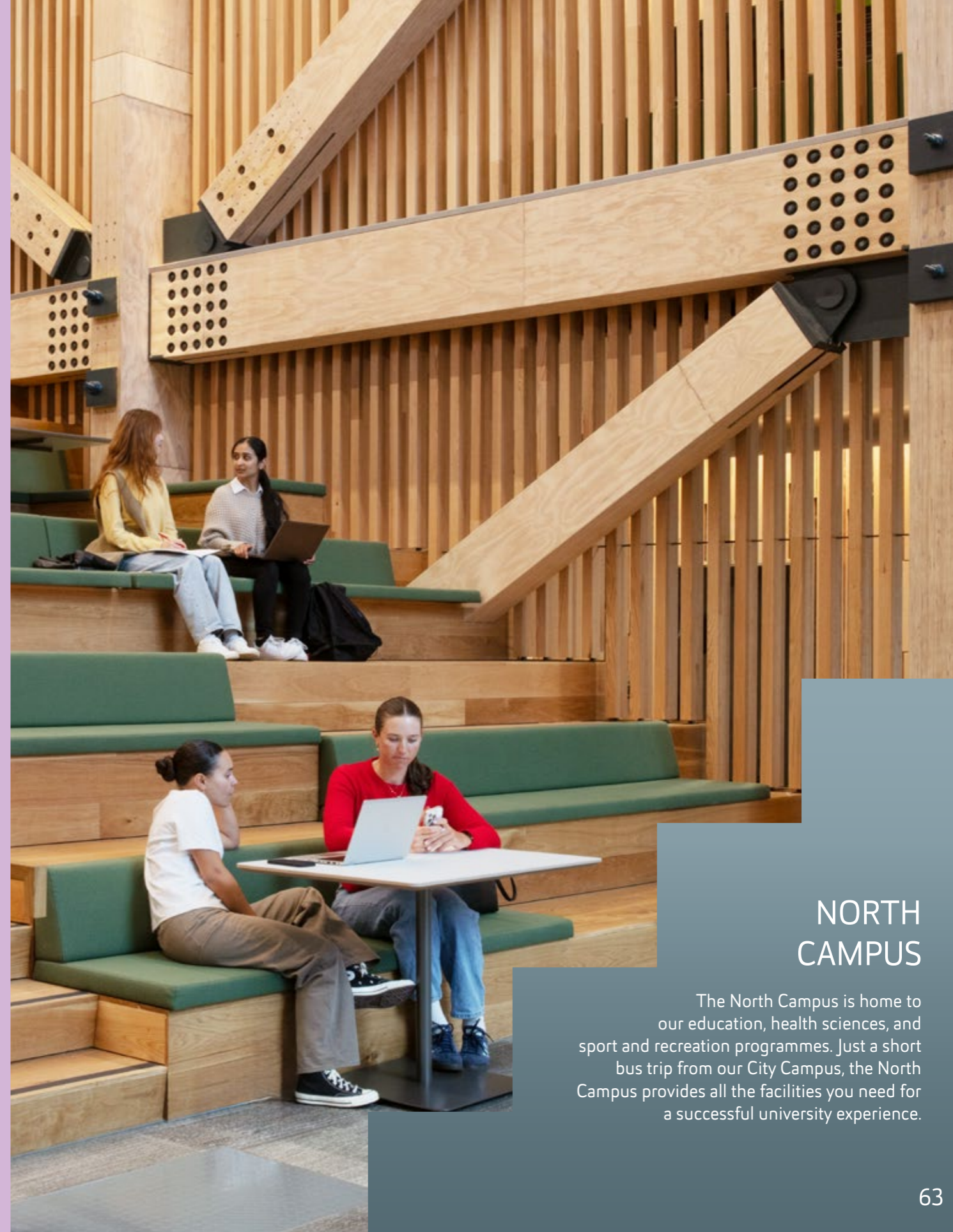
Starts 2 Feb, 4 May, 6 July &  
5 Oct 2026

**Doctor of Philosophy**

Duration 3–6 years

Campus City

Starts 2 Feb, 4 May, 6 July &  
5 Oct 2026

**NORTH CAMPUS**

The North Campus is home to our education, health sciences, and sport and recreation programmes. Just a short bus trip from our City Campus, the North Campus provides all the facilities you need for a successful university experience.



# LANGUAGE & CULTURE

When you study language and culture with us, you'll come to understand the importance of communicating successfully in both local and global environments, and the key role that culture plays. Our courses cover language in its widest sense – from creative writing, and translation and interpreting, to discourse analysis and the importance of intercultural competencies. But no matter what you study, our programmes are taught by academic staff who are passionate about their subject areas and draw on their own experience and research to inform their teaching. Throughout your studies you'll have many opportunities to apply what you've learnt in real-life situations and gain valuable experience for your future career.



Learn from  
award-winning published  
authors and screenwriters



Huge opportunities for workplace  
experience and international  
study exchanges



EMPLOYABILITY  
QS STARS 2023-25



Scan this QR code for details  
about courses, where your study  
could lead and stories about our  
great graduates and students.



## UNDERGRADUATE STUDY

**Certificate in Arts**

**Duration** ½ year full-time,  
part-time available

**Campus** City

**Starts** 23 Feb & 13 July 2026

**Diploma in Arts**

**Duration** 1 year full-time,  
part-time available

**Campus** City

**Starts** 23 Feb 2026

**Bachelor of Arts**

- Creative Writing
- International Studies
- Interpreting
- New Zealand Sign Language and Deaf Studies
- New Zealand Sign Language – English Interpreting

**Duration** 3 years full-time,  
part-time available

**Campus** City

**Starts** 23 Feb & 13 July 2026

**Graduate Certificate in Arts**

**Duration** ½ year full-time,  
part-time available

**Campus** City

**Starts** 23 Feb & 13 July 2026

**Graduate Diploma in Arts**

**Duration** 1 year full-time,  
part-time available

**Campus** City

**Starts** 23 Feb & 13 July 2026

**Bachelor of Arts & Bachelor of Business joint programme**

**Duration** 4 years full-time,  
part-time available

**Campus** City<sup>1</sup>

**Starts** 23 Feb & 13 July 2026

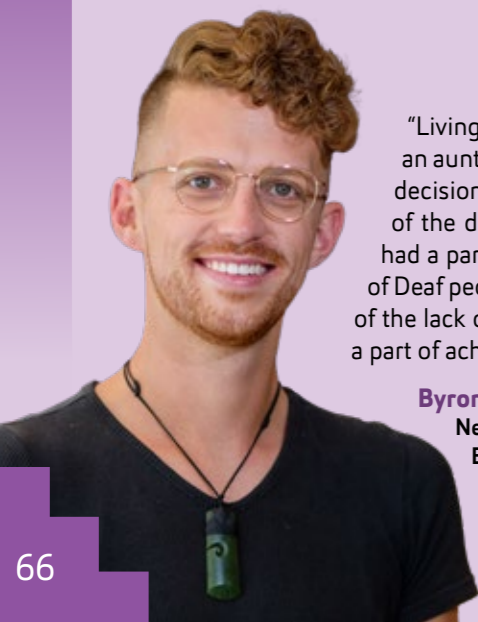
**Bachelor of Arts & Bachelor of Computer and Information Sciences joint programme**

**Duration** 4 years full-time,  
part-time available

**Campus** City

**Starts** 23 Feb & 13 July 2026

1. Business courses also available at the South Campus



“Living with a Deaf mother, as well as having a Deaf uncle and grandparents, and an aunt who is an NZSL interpreter have definitely been guiding influences in the decision to become an interpreter. As a CODA, I already had some understanding of the day-to-day injustices Deaf individuals face. However, one lecture at AUT had a particularly powerful impact on me. It was a presentation on the experience of Deaf people in New Zealand’s criminal justice system. Never before had the extent of the lack of equality for Deaf people been so clear to me. It inspired me to become a part of achieving a better, fairer and more equal life experience for Deaf people.”

**Byron Gibbons**

New Zealand Sign Language Interpreter, Wellington  
Bachelor of Arts in New Zealand Sign Language – English Interpreting

## POSTGRADUATE STUDY

**Master of Philosophy**

**Duration** 1 year full-time,  
part-time available

**Campus** City

**Starts** 2 Feb, 4 May, 6 July &  
5 Oct 2026

**Doctor of Philosophy**

**Duration** 3–6 years

**Campus** City

**Starts** 2 Feb, 4 May, 6 July &  
5 Oct 2026

**WORLD-LEADING RESEARCH**

We pride ourselves on delivering ground-breaking research across the field of language and culture. Our academic staff are known for their expertise across the field of linguistics, and have been involved in a wide range of research collaborations.

“I had been working as an interpreter and translator in Russia and in China, and I felt very lucky to get a Ministry of Business, Innovation and Employment (MBIE) scholarship to study interpreting. I decided to come to AUT because it’s an innovative and growing university, and my husband studied here too. I enjoyed the lectures, practical workshops and – I can’t believe I’m saying this – the homework. Our rich and informative lectures were spiced up with some unforgettable stories from our lecturers. The extremely engaging practical workshops really built our confidence as interpreters. Looking back on our assignments, I can see that the volume, consistency and specific style of our homework transferred broad theoretical knowledge into real-world practice.”

**Aleksandra (Sasha) Manucharova**

Student Support Officer, UP International College  
Graduate Certificate in Arts in Interpreting





# LAW

As an AUT law student, you'll join the most diverse law school in the country where you'll study alongside classmates from different backgrounds, countries and of a variety of ages. You'll be enrolled in a highly respected and versatile degree that will prepare you for a career in law or a wide range of other areas where you can really make a difference. Our programmes are designed to maximise your career opportunities, and have been developed in close consultation with the legal profession. AUT law graduates are pursuing careers in top law firms, the public sector, community organisations and with other employers.



Strong connections with the legal profession



Learn from leading researchers



Collaborative and interactive classes



Scan this QR code for details about courses, where your study could lead and stories about our great graduates and students.



## UNDERGRADUATE STUDY

**Certificate in Legal Studies**

**Duration** ½ year full-time, part-time available  
**Campus** City & South  
**Starts** 23 Feb 2026

**Bachelor of Laws**

**Duration** 4 years full-time, part-time available  
**Campus** City & South  
**Starts** 23 Feb 2026

**Bachelor of Laws (Honours)**

**Duration** 4½ years full-time  
**Campus** City  
**Starts** 23 Feb 2026

## POSTGRADUATE STUDY

**Postgraduate Certificate in Law**

**Duration** ½ year full-time, part-time available  
**Campus** City  
**Starts** 23 Feb & 13 July 2026

**Master of Philosophy**

**Duration** 1 year full-time, part-time available  
**Campus** City  
**Starts** 2 Feb, 4 May, 6 July & 5 Oct 2026

**Doctor of Philosophy**

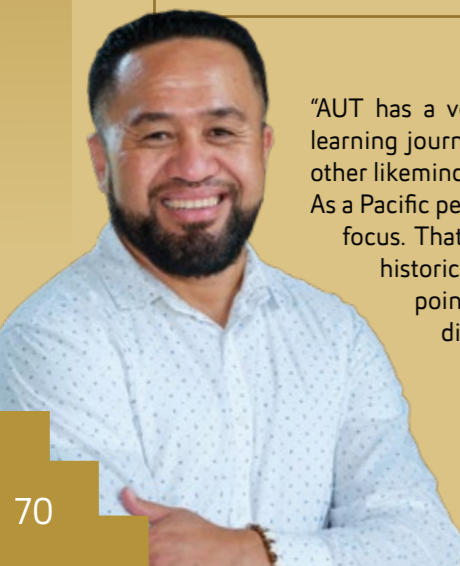
**Duration** 3–6 years  
**Campus** City  
**Starts** 2 Feb, 4 May, 6 July & 5 Oct 2026

**Master of Laws**

**Duration** 1 year full-time, part-time available  
**Campus** City  
**Starts** 23 Feb & 13 July 2026

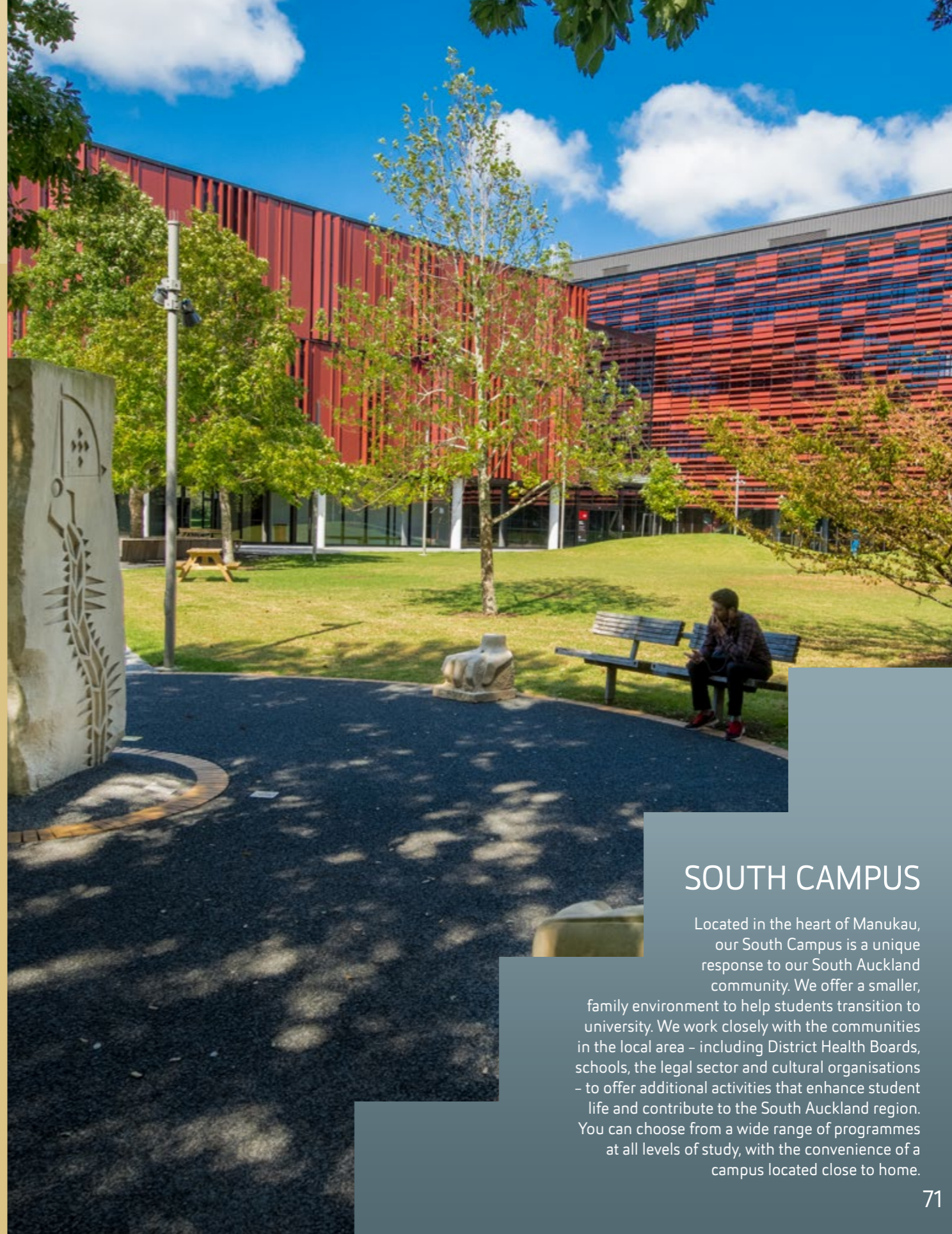
## WORLD-LEADING RESEARCH

Our dedicated research centres ensure that we're at the forefront of developments in the legal profession. The AUT Centre for Non-Adversarial Justice aims to identify and promote various models of justice under the broad banner of non-adversarial justice. The AUT Centre for Private Law facilitates research and debate across the entire spectrum of private law including tort law, contract law, the law of unjust enrichment, property law, equity and private international law. The AUT Centre for Indigenous Rights and Law aims to raise the visibility of legal rights, issues and customary law relevant to the native peoples of Aotearoa New Zealand and the Asia Pacific region.



"AUT has a very community and whānau-oriented approach to students and their learning journey. You can connect directly with your lecturers, journey together with other likeminded students and share knowledge with each other without being judged. As a Pacific person, I've found that AUT provides a platform with a diverse and inclusive focus. That is very helpful to those students who are desperate to break negative historical cycles that affect them and their community. From a mature student point of view, AUT is welcoming to adult students who want to pursue a different area of profession. And that makes AUT my preferred choice of university to study law."

**Sauniuni Seleni**  
 Commercial Senior Associate, BNZ  
 Bachelor of Laws



## SOUTH CAMPUS

Located in the heart of Manukau, our South Campus is a unique response to our South Auckland community. We offer a smaller, family environment to help students transition to university. We work closely with the communities in the local area – including District Health Boards, schools, the legal sector and cultural organisations – to offer additional activities that enhance student life and contribute to the South Auckland region. You can choose from a wide range of programmes at all levels of study, with the convenience of a campus located close to home.



# MĀORI & INDIGENOUS DEVELOPMENT (TE ARA POUTAMA)

Study with us and you'll join New Zealand's most diverse and vibrant university, and develop the skills for rewarding careers in a wide range of industries and professions. At Te Ara Poutama - AUT's Faculty of Māori and Indigenous Development - you'll learn in a supportive whānau environment with staff who are passionate about seeing you succeed, at university and beyond. Grounded in te ao Māori, our qualifications will prepare you to contribute in diverse ways in media, business, government, community and iwi organisations. You'll graduate with a qualification that is widely regarded, and with valuable experiences and industry connections for your future career.



Supportive whānau  
environment



State-of-the-art  
technology



Nationally and  
internationally  
recognised lecturers



Scan this QR code for details about courses, where your study could lead and stories about our great graduates and students.



## UNDERGRADUATE STUDY

<p><b>Certificate in Arts</b></p> <p><b>Duration</b> ½ year full-time, part-time available</p> <p><b>Campus</b> City</p> <p><b>Starts</b> 23 Feb &amp; 13 July 2026</p>	<p><b>Bachelor of Arts &amp; Bachelor of Business conjoint programme</b></p> <p><b>Duration</b> 4 years full-time, part-time available</p> <p><b>Campus</b> City<sup>1</sup></p> <p><b>Starts</b> 23 Feb &amp; 13 July 2026</p>	<p><b>Graduate Certificate in Arts</b></p> <p><b>Duration</b> ½ year full-time, part-time available</p> <p><b>Campus</b> City</p> <p><b>Starts</b> 23 Feb &amp; 13 July 2026</p>
<p><b>Diploma in Arts</b></p> <p><b>Duration</b> 1 year full-time, part-time available</p> <p><b>Campus</b> City</p> <p><b>Starts</b> 23 Feb 2026</p>	<p><b>Bachelor of Arts &amp; Bachelor of Computer and Information Sciences conjoint programme</b></p> <p><b>Duration</b> 4 years full-time, part-time available</p> <p><b>Campus</b> City</p> <p><b>Starts</b> 23 Feb &amp; 13 July 2026</p>	<p><b>Graduate Diploma in Arts</b></p> <p><b>Duration</b> 1 year full-time, part-time available</p> <p><b>Campus</b> City</p> <p><b>Starts</b> 23 Feb &amp; 13 July 2026</p>
<p><b>Bachelor of Arts</b></p> <ul style="list-style-type: none"> <li>• History</li> <li>• Māori Development</li> <li>• Māori Media</li> </ul> <p><b>Duration</b> 3 years full-time, part-time available</p> <p><b>Campus</b> City</p> <p><b>Starts</b> 23 Feb &amp; 13 July 2026</p>		

1. Business courses also offered at the South Campus.



“At first, I was terrified of making the big move from Taranaki to Auckland, but the AUT Māori whānau room quickly became a home away from home. It was a space where everyone was in the same boat; moving to the big city from small rural towns or wherever we came from, and we all formed a strong bond. In the first semester of my first year at AUT, one of the TVNZ staff came into my class and asked if any of us were interested in a career in journalism. I saw it as an opportunity to put my foot in the door. It started as a small casual role for 1News, but it led to more opportunities, including work with Te Karere Māori News.”

**Kataraina Aneff**  
*Ngāti Ruanui, Ngāruahinerangi, Ngāti Tumutumu, Ngāti Tamaterā*  
**Te Karere Digital Producer, Television New Zealand**  
**Bachelor of Māori Development in Māori Media**

## POSTGRADUATE STUDY

<p><b>Postgraduate Certificate in Arts</b></p> <p><b>Duration</b> ½ year full-time, part-time available</p> <p><b>Campus</b> City</p> <p><b>Starts</b> 23 Feb &amp; 13 July 2026</p>	<p><b>Postgraduate Diploma in Arts</b></p> <p><b>Duration</b> 1 year full-time, part-time available</p> <p><b>Campus</b> City</p> <p><b>Starts</b> 23 Feb &amp; 13 July 2026</p>	<p><b>Master of Philosophy</b></p> <p><b>Duration</b> 1 year full-time, part-time available</p> <p><b>Campus</b> City</p> <p><b>Starts</b> 2 Feb, 4 May, 6 July &amp; 5 Oct 2026</p>
	<p><b>Master of Arts</b></p> <ul style="list-style-type: none"> <li>• Māori Development</li> </ul> <p><b>Duration</b> 2 years full-time, part-time available</p> <p><b>Campus</b> City</p> <p><b>Starts</b> 23 Feb &amp; 13 July 2026</p>	<p><b>Doctor of Philosophy</b></p> <p><b>Duration</b> 3-6 years</p> <p><b>Campus</b> City</p> <p><b>Starts</b> 2 Feb, 4 May, 6 July &amp; 5 Oct 2026</p>

### WORLD-LEADING RESEARCH

We deliver leading research in a number of areas within Māori and indigenous development, working closely with academics and organisations from around New Zealand and the world. As a postgraduate student you work closely with academic staff who are known as experts in their field – from Māori business and entrepreneurship to Māori media and from Mātauranga Māori to New Zealand history and Te Tiriti o Waitangi.



# SCIENCE

Environmental sustainability, innovative food production, geospatial science and chemical synthesis techniques are some of the key ingredients that will shape the future world we live in. Study science with AUT and you'll be prepared for a rewarding career in a wide range of industries and professions. Our collaboration with industry means that your study will be highly relevant to your career. Our research focuses on scientific issues of regional and global significance – research that makes a difference to the world we live in. AUT science alumni contribute to scientific innovation and world-leading research in many fields, and are highly sought-after by employers around the world.



Study science majors designed to solve the world's problems



Get out of the classroom with science field trips, labs and practical sessions



Nationally and internationally recognised lecturers



Scan this QR code for details about courses, where your study could lead and stories about our great graduates and students.



## UNDERGRADUATE STUDY

**Certificate in Applied Science**

**Duration** 1 year full-time, part-time available

**Campus** City

**Starts** 23 Feb & 13 July 2026

**Diploma in Applied Science**

**Duration** 1 year full-time, part-time available

**Campus** City

**Starts** 23 Feb & 13 July 2026

**Bachelor of Science**

- Analytics
- Biological Science
- Biomedical Science
- Chemistry
- Environmental Science
- Food Science
- Marine Science
- Mathematical Modelling and Computation

**Duration** 3 years full-time, part-time available

**Campus** City

**Starts** 23 Feb & 13 July 2026

**Bachelor of Medical Laboratory Science**

**Duration** 4 years full-time, part-time available

**Campus** City

**Starts** 23 Feb 2026

**Graduate Certificate in Science**

**Duration** ½ year full-time, part-time available

**Campus** City

**Starts** 23 Feb & 13 July 2026

**Graduate Diploma in Science<sup>1</sup>**

**Duration** 1 year full-time, part-time available

**Campus** City

**Starts** 23 Feb & 13 July 2026

## POSTGRADUATE STUDY

**Bachelor of Science (Honours)**

**Duration** 1 year full-time, part-time available

**Campus** City

**Starts** 23 Feb 2026

**Postgraduate Certificate in Science**

**Duration** ½ year full-time, part-time available

**Campus** City

**Starts** 23 Feb & 13 July 2026

**Postgraduate Diploma in Science**

- Biomedical Science
- Chemistry
- Environmental Science
- Food Science
- Geospatial Science
- Marine Science
- Microbiology
- Molecular Genetics

**Duration** 1 year full-time, part-time available

**Campus** City

**Starts** 23 Feb & 13 July 2026

**Master of Science**

- Biomedical Science
- Chemistry
- Environmental Science
- Food Science
- Geospatial Science
- Marine Science
- Microbiology
- Molecular Genetics

**Duration** 1½ years full-time, part-time available

**Campus** City

**Starts** 23 Feb & 13 July 2026<sup>2</sup>

**Master of Science (Research)**

- Biomedical Science
- Chemistry
- Environmental Science
- Food Science
- Geospatial Science
- Marine Science
- Microbiology
- Molecular Genetics

**Duration** 2 years full-time, part-time available

**Campus** City

**Starts** 23 Feb & 13 July 2026

**Postgraduate Certificate in Medical Laboratory Science**

**Duration** ½ year full-time, part-time available

**Campus** City

**Starts** 23 Feb & 13 July 2026

**Postgraduate Diploma in Medical Laboratory Science**

**Duration** 1 year full-time, part-time available

**Campus** City

**Starts** 23 Feb & 13 July 2026

**Master of Medical Laboratory Science**

**Duration** 2 years full-time, part-time available

**Campus** City

**Starts** 23 Feb & 13 July 2026

**Master of Philosophy**

**Duration** 1 year full-time, part-time available

**Campus** City

**Starts** 2 Feb, 4 May, 6 July & 5 Oct 2026

**Doctor of Philosophy**

**Duration** 3–6 years

**Campus** City

**Starts** 2 Feb, 4 May, 6 July & 5 Oct 2026

1. If you want to register as a medical laboratory scientist, you can study medical laboratory science courses in this programme (approval required).

2. The Geospatial Science specialisation only starts in February

**WORLD-LEADING RESEARCH**

Our globally renowned researchers are experts in areas as diverse as applied ecology, chemistry, biomedical science and food science. You have access to top facilities and equipment for your research, like aerial drones and marine research vessels. Our outstanding laboratories include the AUT Roche Diagnostics Laboratory – which has state-of-the-art medical and biomedical testing equipment, and is the only university lab of its kind in New Zealand.



“At AUT the small classes make it easy to connect with people and it means you can actually get to know your lecturer. I don’t just feel like a number at AUT; I feel like they really care about my ideas and what I want to pursue. I’m interested in how we can use technology to allow us in New Zealand to collect better data, faster and cheaper, and how we can use this data to get better conservation outcomes. I think it’s really cool AUT has a project like the Living Labs project where we can test new approaches to conservation and gather evidence about the best approaches to restoration.”

**Harry Creevey**  
Graduate Diploma in Science student



# SOCIAL SCIENCES & PUBLIC POLICY

If you want a rewarding career where you can make a difference, studying social sciences and public policy is the perfect start. At AUT you'll study society at many levels – from individuals, families and communities, governments and cultures through to our global system. Our academic staff are research-active and globally known as experts in areas as diverse as economics, politics, public policy, social theory, psychology, human rights, gender equality, ethnicity and race, identity, community development, social structure, social data analytics, and criminology and criminal justice. Study with us and you'll gain an in-depth understanding about how and why people think and behave as they do; skills that are essential no matter where your career takes you.



Research undertaken with national and local government



Huge opportunities for workplace experience and international study exchanges



Nationally and internationally recognised lecturers



Scan this QR code for details about courses, where your study could lead and stories about our great graduates and students.



## UNDERGRADUATE STUDY

Certificate in Arts	
Duration	½ year full-time, part-time available
Campus	City
Starts	23 Feb & 13 July 2026

Diploma in Arts	
Duration	1 year full-time, part-time available
Campus	City
Starts	23 Feb 2026

Bachelor of Arts	
	<ul style="list-style-type: none"> <li>• Criminology and Criminal Justice</li> <li>• Psychology</li> <li>• Social Sciences</li> </ul>
Duration	3 years full-time, part-time available
Campus	City <sup>1</sup>
Starts	23 Feb & 13 July 2026

Bachelor of Arts & Bachelor of Business conjoint programme	
Duration	4 years full-time, part-time available
Campus	City <sup>2</sup>
Starts	23 Feb & 13 July 2026

Bachelor of Arts & Bachelor of Computer and Information Sciences conjoint programme	
Duration	4 years full-time, part-time available
Campus	City
Starts	23 Feb & 13 July 2026

Graduate Certificate in Arts	
Duration	½ year full-time, part-time available
Campus	City & North
Starts	23 Feb & 13 July 2026

Graduate Diploma in Arts	
Duration	1 year full-time, part-time available
Campus	City & North
Starts	23 Feb & 13 July 2026

1. Some psychology courses are offered at the North Campus  
2. Business courses also available at the South Campus



"I chose to study social sciences because of my interest in psychology and public policy. What I enjoyed the most about my studies was being able to pursue contemporary topics for various assignments – from intergenerational injustice to climate policy and economic theories that are sustainable and regenerative by design. I found my passion for public service during the introductory lecture for the course Culture and Society and felt inspired to work in public policy in the climate governance and economics space. I'd recommend this programme because of the many possibilities you'll be exposed to throughout your studies, and the knowledge you'll gain from the passionate lecturers in the social sciences and psychology departments."

**Karen Ishikawa**  
Associate Policy Advisor, Ministry of Business, Innovation and Employment,  
Wellington  
Bachelor of Arts in Social Sciences and Psychology

## POSTGRADUATE STUDY

Bachelor of Arts (Honours)	
	<ul style="list-style-type: none"> <li>• Criminology and Criminal Justice</li> <li>• Psychology</li> </ul>
Duration	1 year full-time, part-time available
Campus	City
Starts	23 Feb & 13 July 2026

Postgraduate Certificate in Arts	
Duration	½ year full-time, part-time available
Campus	City
Starts	23 Feb & 13 July 2026

Master of Arts	
	<ul style="list-style-type: none"> <li>• Psychology</li> </ul>
Duration	2 years full-time, part-time available
Campus	City
Starts	23 Feb & 13 July 2026

Postgraduate Diploma in Criminology and Criminal Justice	
Duration	1 year full-time, part-time available
Campus	City
Starts	16 Feb 2026 (TBC)

Master of Criminology and Criminal Justice	
Duration	1½ years full-time, part-time available
Campus	City
Starts	16 Feb 2026 (TBC)

Postgraduate Certificate in Human Rights	
Duration	½ year full-time, part-time available
Campus	City
Starts	9 Mar & 16 July 2026

Postgraduate Diploma in Human Rights	
Duration	1 year full-time, part-time available
Campus	City
Starts	19 Jan 2026

Master of Human Rights	
Duration	1 year full-time, part-time available
Campus	City
Starts	19 Jan 2026

Master of Philosophy	
Duration	1 year full-time, part-time available
Campus	City
Starts	2 Feb, 4 May, 6 July & 5 Oct 2026

Doctor of Philosophy	
Duration	3–6 years
Campus	City
Starts	2 Feb, 4 May, 6 July & 5 Oct 2026

## WORLD-LEADING RESEARCH

We believe in high-quality research that has impact, and our world-class researchers have expertise across social sciences and social justice – from human rights and gender equality, to psychology, criminology and community development. As a postgraduate student, you work closely with some of New Zealand's most widely known experts in social sciences and social justice. Our experienced lecturers constantly draw on their own international and New Zealand experience and research to inform their teaching. You could also benefit from the expertise of the Centre for Social Data Analytics, which applies strong data science to linked data, undertaking research that tells us new things about the human experience.



# SPORT & RECREATION

Ranked 28th in the world by university rankings organisation QS, AUT offers New Zealand's most advanced sports qualifications. As a sport and recreation student, you'll learn at our state-of-the-art facilities, including AUT Millennium, a high-performance sport and health facility. During your study with us, you'll be supported by research-active academic staff who are committed to helping you achieve your highest potential. Our world-class researchers work with leading organisations and athletes to challenge current practices. Many of our staff have been elite athletes, coaches and adventurers, and they all love what they do.



**TOP 30**  
WORLDWIDE  
for Sport



One of the best work  
placement programmes  
in New Zealand

 **AUT MILLENNIUM**

Home of NZ's leading  
sport and fitness facility,  
AUT Millennium



Scan this QR code for details about courses, where your study could lead and stories about our great graduates and students.



## UNDERGRADUATE STUDY

**Certificate in Sport and Recreation**

**Duration** ½ year full-time, part-time available

**Campus** North & South

**Starts** 23 Feb 2026

**Bachelor of Sport, Exercise and Health**

- Health and Physical Education
- Sport and Exercise Science
- Sport Leadership and Management

**Duration** 3 years full-time, part-time available

**Campus** North & South

**Starts** 23 Feb & 13 July 2026

**Graduate Certificate in Sport and Exercise**

**Duration** ½ year full-time, part-time available

**Campus** North & South

**Starts** 23 Feb & 13 July 2026

**Graduate Diploma in Sport and Exercise**

**Duration** 1 year full-time, part-time available

**Campus** North & South

**Starts** 23 Feb & 13 July 2026

## KEY

- Ⓝ North Campus
- Ⓢ South Campus

## WORLD-LEADING RESEARCH

AUT is globally known for its leading sport and exercise science research. Our research covers sport and activity-related areas, as well as performance, nutrition, coaching and human potential. We're proud to be the home of New Zealand's top sport and fitness facility, AUT Millennium, which helps our communities be healthy and our top athletes become champions. Based at AUT Millennium, the Sports Performance Research Institute New Zealand (SPRINZ) is New Zealand's number one sports research institute. Its world-class laboratory facilities and international reputation attract many overseas researchers and students to New Zealand, and SPRINZ research has received funding from organisations like the Health Research Council, Sport New Zealand and the World Health Organization.



"I heard great things about AUT, for example, that it was more practical and industry focused, with first-hand experience from the lecturers. For my final-year workplace experience I did an internship with the Vanuatu National Sports Commission where my project was on their newly developed infrastructure concerning legacy and sustainability. In the same year, I was also part of a small team that entered into an international competition where we won a slot to present to FC Bayern Munich in Germany, my beloved European team. During these moments I saw what I was able to achieve; accelerating my confidence in expressing my abilities."

**Scott Woodford**

Member Association Development Manager (Oceania),  
FIFA Regional Development Office  
Bachelor of Business in International Business &  
Bachelor of Sport and Recreation in Management

## POSTGRADUATE STUDY

**Bachelor of Sport and Recreation (Honours)**

**Duration** 1 year full-time, part-time available

**Campus** North

**Starts** 23 Feb & 13 July 2026

**Postgraduate Certificate in Sport, Exercise and Health**

**Duration** ½ year full-time, part-time available

**Campus** North & online study

**Starts** 23 Feb & 13 July 2026

**Master of Sport, Exercise and Health**

**Duration** 1½ years full-time, part-time available

**Campus** North & online study

**Starts** 23 Feb & 13 July 2026

**Master of Philosophy**

**Duration** 1 year full-time, part-time available

**Campus** North & South

**Starts** 2 Feb, 4 May, 6 July & 5 Oct 2026

**Doctor of Philosophy**

**Duration** 3-6 years

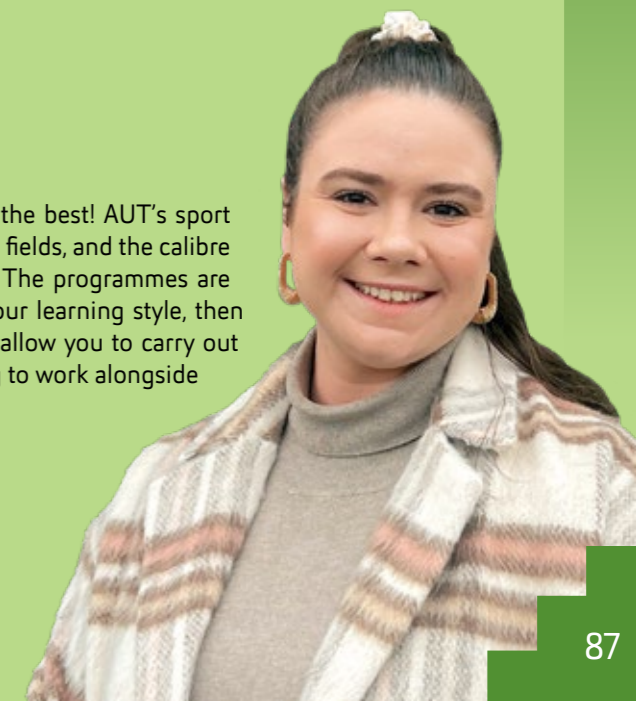
**Campus** North & South

**Starts** 2 Feb, 4 May, 6 July & 5 Oct 2026

"If you want to learn from the best, then you need to be with the best! AUT's sport and recreation staff are often leading the way in their respective fields, and the calibre of our research is impressive and the top of the game by far. The programmes are very practical and lean towards kinetic learning, so if this is your learning style, then AUT is the place for you. The facilities are well-equipped and allow you to carry out meaningful work, and the staff are extremely helpful and willing to work alongside you to achieve your best."

**Hannah Tiedt**

Doctor of Philosophy candidate  
Master of Sport, Exercise and Health in Strength and Conditioning with Distinction  
Bachelor of Sport and Recreation in Exercise Science and Nutrition & Sport and Exercise Science





# He pēhea te tono HOW TO APPLY

Below is the step-by-step guide to the application process.  
For more information visit [aut.ac.nz/apply](https://aut.ac.nz/apply)

## 1 APPLY EARLY

Places are limited. Submit your application well before the semester starts.

APPLYING FOR 2026

- Semester 1  
– apply by 1 December 2025
- Semester 2  
– apply by 4 May 2026

### Applying for the Master of Philosophy (MPhil) and Doctor of Philosophy (PhD)

Feb start date: apply by 1 Nov 2025

May start date: apply by 1 Feb 2026

July start date: apply by 1 April 2026

October start date: apply by 1 July 2026

## 2 COMPLETE THE APPLICATION FORM

- Apply online
- Indicate your programme(s) of choice and major (if known)

International students can also apply using an AUT approved international agent. For a list of AUT registered agents visit [aut.ac.nz/international-agents](https://aut.ac.nz/international-agents)

## SUBMIT YOUR APPLICATION

### WE ACKNOWLEDGE YOUR APPLICATION

- We will send you an acknowledgment email, which explains how to check the status of your application
- We will contact you if we need more information

## WE ASSESS YOUR APPLICATION

- We assess your application to ensure you have met the entry criteria for the programme(s) you are applying for
- We consider your academic history and relevant experience to ensure you can succeed in your programme
- We let you know if your application has been successful

## POSSIBLE OUTCOMES

**CONFIRMED** We would like to offer you a place to study at AUT

**PROVISIONAL** You have met some of the criteria for entry to your chosen programme of study and we would like to offer you a provisional place to study at AUT. If you don't meet the rest of the requirements, then this offer will be withdrawn

**CONDITIONAL** You have to meet the conditions and approvals listed in your conditional offer to be able to secure a formal offer of place

**DECLINED** If you don't meet the entry requirements or all places are taken, we may offer you an alternative programme

## 3 ACCEPT YOUR OFFER

It's important that you respond as soon as possible, particularly if you've been offered a place in a programme with limited places.

Once you've accepted your offer of place, we'll let you know how to enrol in the courses for your programme, and you can start to get excited about joining AUT.

Ready to apply?  
[apply.aut.ac.nz](https://apply.aut.ac.nz)



# Ngā hiahiatanga kia uru mai ENTRY REQUIREMENTS

All applicants need to meet AUT's minimum entry requirements. Because of competition for places, you may need to have more than the minimum entry requirements for admission to some programmes. Entry requirements for each programme you can study at AUT are listed on the AUT website. The information on this page serves as a guide only.

For more information and specific entry requirements for each programme visit [aut.ac.nz](http://aut.ac.nz)

## University admission to AUT bachelor's degrees

If you're a New Zealand citizen or resident, or an international student studying in a New Zealand high school, you must meet the requirements for University Entrance to gain admission to bachelor's degrees, plus any additional requirements for your chosen programme such as specific subjects and interviews.

### Admission categories

You may be granted University Entrance under one of the following categories:

- NCEA University Entrance
- Ad Eundem Statum admission (at an equivalent level) – this includes Cambridge Assessment International Education (CAIE) and International Baccalaureate Diploma Programme (IB)
- Discretionary Entrance
- Special Admission

Visit [aut.ac.nz/entryrequirements](http://aut.ac.nz/entryrequirements) to find about more details about these admission categories.

## Certificates and diplomas

Entry requirements for certificates and diplomas vary by programme. You can find specific entry requirements for your chosen programme on our website [aut.ac.nz](http://aut.ac.nz)

## Graduate certificates and graduate diplomas

You generally need to have completed an undergraduate qualification for entry to a graduate certificate or diploma. You can find specific entry requirements for your chosen programme on our website [aut.ac.nz](http://aut.ac.nz)

## Postgraduate programmes

Entry requirements for AUT postgraduate programmes vary. You can find specific entry requirements on the programme page for your chosen programme on our website [aut.ac.nz](http://aut.ac.nz)

Minimum entry requirements are generally a successfully completed bachelor's degree in the same area of study from a recognised university. You may also be required to provide evidence of relevant work/research experience.

If you're planning to undertake a thesis, a research proposal will also be required.

## NCEA university entrance

You must achieve all of the below

Level 3 (60 credits)	UE Literacy	Numeracy
<p>Within the 60 credits, you need to at least achieve the below</p> <ul style="list-style-type: none"> <li>14 credits in approved subject 1</li> <li>14 credits in approved subject 2</li> <li>14 credits in approved subject 3</li> <li>18 credits from any Level 3 standards</li> </ul>	<ul style="list-style-type: none"> <li>5 Reading credits (Level 2 or 3)</li> <li>5 Writing credits (Level 2 or 3)</li> </ul>	<ul style="list-style-type: none"> <li>10 Numeracy credits at Level 1, 2 or 3</li> </ul>

To find out more visit [www2.nzqa.govt.nz/ncea/understanding-secondary-quals/university-entrance](http://www2.nzqa.govt.nz/ncea/understanding-secondary-quals/university-entrance)

## Getting UE through CAIE or IB? Here's what you will need:

CAIE		
120 points on the New Zealand CAIE Tariff at A or AS level in any subjects that are broadly equivalent to NCEA approved subjects	E or above in English Language, Language and Literature in English or Literature at AS or A level	D or above in IGCSE or GCSE Mathematics, or any mathematics subject passed at AS or A level
D or above in at least 3 different subjects (excluding Thinking Skills)		
IB <sup>1</sup>		
IB Diploma with a minimum 24 points	Literature or language and literature (SL or HL) – IB Group 1, with English as the language	Any mathematics subject – IB Group 5

1. New Zealand residents who have taken IB but have not been awarded the diploma may apply for discretionary entrance.

## UniPrep programme

Not sure if you're ready for university or what to expect at AUT? Taking place over five weeks in January and February every year, UniPrep is designed to ease you into university life and ensure you get the best possible start. Expect to advance your study skills, make lifelong friends, take part in team activities, find out where to get support for your studies and complete your first university course. Once you're part of our UniPrep whānau, just know – we got you!

Visit [aut.ac.nz/uniprep](http://aut.ac.nz/uniprep)



# Ngā utu whakauru, ngā karahipi FEES & SCHOLARSHIPS

## Find out what it costs

Cost is an important factor when thinking about university study. Visit our website [aut.ac.nz/fees](https://aut.ac.nz/fees) to get an idea of the approximate tuition fees at AUT, and different options to help you fund your education including scholarships, student loans and allowances.

The 2026 tuition fees will be advertised on [aut.ac.nz/fees](https://aut.ac.nz/fees) as soon as they have been set.

1. Domestic students only, not available to international students.

## Scholarships and awards

Scholarships and awards are a great way to fund your university study. There is a wide range of scholarships and awards available to AUT students at all stages of their study. Visit the scholarships website for a current list of scholarships offered by AUT and external funders, as well as application forms and closing dates.

You can also contact AUT's Scholarships Office for advice on scholarships, awards and the scholarship application process.

Call **+64 9 921 9837** or visit [aut.ac.nz/scholarships](https://aut.ac.nz/scholarships)

## Student loans and allowances<sup>1</sup>

If you're a full-time domestic student, you may qualify for a student loan or allowance. Student loans and allowances are administered and paid by StudyLink. The application process can take some time, so it's a good idea to apply early. You can apply for a student loan or student allowance before your enrolment at AUT is complete.

Call **0800 88 99 00** or visit [studylink.govt.nz](https://studylink.govt.nz)

1. For domestic students only, not available to international students

## Free fees for your university study<sup>1</sup>

Eligible domestic students may receive their final-year of full-time study fees-free<sup>1</sup>.

To check if you're eligible for fees-free study visit [aut.ac.nz/fees](https://aut.ac.nz/fees)

## Financial assistance

We know that sometimes things happen and financial stress can impact your academic success. That's why we offer financial support that ranges from offering grocery or fuel vouchers, to helping with that unexpected bill.

## StudyLink website

Visit [studylink.govt.nz](https://studylink.govt.nz) for tools, tips and information to help you plan and understand the costs you will have while studying.

# Ētahi atu kōrero FIND OUT MORE

## Visit our website

To find out more about study at AUT, including more details about our programmes and the courses you could study, entry requirements, and information about academic staff and their areas of expertise visit [aut.ac.nz](https://aut.ac.nz)

## Need some help?

Visit [aut.ac.nz/enquire](https://aut.ac.nz/enquire), ask us your question and we'll call you back. Or you can phone 0800 AUT AUT (0800 288 288) to speak to one of our friendly advisors. We can help with any questions you may have, and you could also book a course counselling session or a campus tour.

## AUT LIVE

30 August 2025

Join us at our open day, AUT LIVE, on the City Campus and see everything AUT has to offer to help you make an educated decision about university study.

[aut.ac.nz/live](https://aut.ac.nz/live)







This booklet is printed on Satin matt and Offset paper certified by the Forest Stewardship Council® (FSC®) as an FSC Mix paper from well managed forests and other responsible sources.

We print using BIO-inks that contain materials that are based on renewable resources including wood resin (rosin, colophony), and vegetable oils, linseed oil and soybean oil and the printing company is FSC certified.





**0800 AUT AUT (0800 288 288)**  
**Auckland University of Technology**  
[aut.ac.nz](http://aut.ac.nz)

**Enquire now**  
[aut.ac.nz/enquire](http://aut.ac.nz/enquire)

**CITY CAMPUS**  
55 Wellesley Street East, Auckland City, Auckland

**NORTH CAMPUS**  
90 Akoranga Drive, Northcote, Auckland

**SOUTH CAMPUS**  
640 Great South Road, Manukau, Auckland

**Connect with us now:**

