

CULTURE & SOCIETY

AUT

TE WĀNANGA ARONUI
O TĀMAKI MAKAU RAU

CULTURE & SOCIETY

UNDERGRADUATE PROGRAMME GUIDE
2026



TOP 100
WORLDWIDE
Young University

AUCKLAND
UNIVERSITY
OF TECHNOLOGY

Nau mai, haere mai ki AUT WELCOME TO AUT

E ngā mana, e ngā reo
E te iti, e te rahi
E ngā mātāwaka o ngā tōpito o te ao
Ngā mahuetanga iho e kawe nei i ngā
moemoeā o rātou mā
Tēnā koutou katoa

Piki mai rā, kake mai rā,
Nau mai, haere mai ki tēnei o ngā wānanga
Whakatau mai i raro i te korowai āhuru o Te Wānanga
Aronui o Tāmaki Makau Rau

Te whakatupu i te kōunga, i te mana taurite me ngā
tikanga matatika, i ngā pūkenga ako,
i ngā pūkenga whakaako me te āta rangahau hei hāpai
i ngā hāpori whānui o te motu, otirā, o te ao.

To the prestigious, the many voices
The few, the great
To those of all races and creeds
We who remain to fulfil the dreams and
aspirations of the ancestors
Greetings one and all

Climb, ascend
Embark on the journey of knowledge
Let us at AUT embrace and empower you
To strive for and achieve excellence

To foster excellence, equity and ethics in
learning, teaching, research and scholarship,
and in so doing serve our regional, national
and international communities.

Cover

The cover design symbolises the far-reaching impact AUT has on students, their whānau, society and the world. The ripples represent this impact, while beneath them lies a modern Poutama pattern, symbolising the support and guidance AUT provides to students on their educational journey. A traditional Poutama design on the back connects to the front, reflecting the foundational role of Te Ao Māori in supporting and enhancing all aspects of AUT.

Disclaimer: Although every reasonable effort is made to ensure accuracy, the information in this document is provided as a general guide only for students and is subject to change. All students enrolling at AUT should consult its official document, the AUT Calendar, which is available online at aut.ac.nz/calendar, to ensure that they are aware of, and comply with, all regulations, requirements and policies. The information contained in this programme guide was correct at the time of print, December 2024.

Ngā ihirangi CONTENTS

About AUT

- 02 Why study at AUT?
- 04 Student life

Course information

Bachelor of Arts

- 06 Overview
- 10 Creative Writing
- 11 Criminology and Criminal Justice
- 12 Culinary Arts
- 13 Education
- 14 Event Management
- 15 Global Tourism
- 16 History
- 17 International Studies
- 18 Interpreting
- 19 Māori Development
- 20 Māori Media
- 21 New Zealand Sign Language and Deaf Studies
- 22 New Zealand Sign Language – English Interpreting
- 23 Psychology
- 24 Social Sciences

Bachelor of Education ([Specialty] Teaching)

- 26 Overview
- 28 Early Childhood Teaching
- 29 Primary Teaching

Bachelor of International Hospitality Management

- 30 Overview
- 33 Hospitality Enterprise
- 34 Hospitality Management

- 35 Diploma in Arts
- 36 Diploma in Culinary Arts
- 37 Diploma in Pâtisserie
- 38 Graduate Diploma in Arts
Graduate Certificate in Arts
- 39 Graduate Diploma in International
Hospitality Management
Graduate Certificate in International
Hospitality Management
- 40 Graduate Diploma in Secondary Teaching

Applying for your programme

- 42 University entrance
- 44 Fees and scholarships
- 46 How to apply
- 48 Find out more



He aha ai e ako ki AUT? Why study at AUT?

Scan this QR code for details about courses, where your study could lead and stories about our great graduates and students.



1 Enjoy being within walking distance of Auckland's arts scene 2 & 3 Education and Event Management are just two of the 15 majors available in the Bachelor of Arts 4 The AUT City Campus offers a welcoming and inclusive environment

New Zealand's leading modern university

AUT is proud to be one of the world's best modern universities. Study with us and you'll join New Zealand's most diverse and vibrant university, and develop the skills for rewarding careers in a wide range of industries and professions. Across all of our programmes, we encourage innovation and entrepreneurship, and the ability to make a positive social impact, explore new technologies, challenge routine thinking and solve problems in new ways. With an AUT degree, you'll graduate with so much more than knowledge of your chosen discipline; you'll also get a sound understanding of your place in the world, and the power you have to influence change in Aotearoa New Zealand and beyond. AUT is where talent meets opportunity, and we love seeing so many of our graduates shape successful careers in New Zealand and around the world.

Preparing you for the future

When you join AUT, you can be sure that your qualification is widely regarded. Times Higher Education has ranked us in the top 1% of universities in the world, the top 100 universities under 50 years of age and number one in Aotearoa New Zealand for international outlook. Our hospitality, tourism and event management courses are also ranked in the top 100 in the world by QS and 40th globally by the Shanghai Ranking. In all of our bachelor's degrees, you complete valuable workplace experience; a great opportunity to see what your future career could be like and meet potential employers. Your degree can be as unique as you are - you could include subjects from across AUT and tailor your studies to your interests. And if you want another way into AUT, our Diploma in Arts is a great way to start your studies and gain the confidence to succeed.

Top facilities and equipment

To make sure your learning is relevant to your future career, you have access to top facilities and industry-standard equipment, including our culinary arts facilities. You'll study in modern buildings that don't just win architecture awards but also offer excellent environments where you can collaborate with your classmates and develop skills that help you stand out to employers. We're proud of our five-star ranking for teaching and facilities, awarded by the world university rankings organisation QS. Our state-of-the-art buildings were created using sustainable principles and offer inviting lecture theatres, auditoriums and research spaces; offering you the perfect environment for your studies.

Research that shapes tomorrow

Our research is focused on real-world impact, and we're proud of our reputation as a leading research university. As an AUT student you could learn from globally renowned researchers who are experts in various areas across the humanities. Their research often feeds back into the classroom, and you may even be able to contribute to these research discoveries. We have a number of world-class research centres and groups, including the Centre for Social Data Analytics, which applies strong data science to linked data, undertaking research that tells us new things about the human experience.

Oranga Taurira

STUDENT LIFE

As a modern and innovative university, we offer you endless opportunities, and a supportive culture that celebrates diversity. Here, you are at the heart of everything we do. At AUT, you'll find some of the most comprehensive student support services in New Zealand, designed in collaboration with our students. We'll support you to build friendships, develop life skills, achieve academically, and have amazing experiences both inside and outside the classroom.

The best start for your uni journey

Starting university life is exciting and perhaps a little daunting, regardless of your stage in life. With our wide-ranging support services, orientation programmes at the start of each semester, and multiple opportunities to meet new friends and follow a passion or hobby, you'll transition smoothly.

Student Hub

Our professionally qualified staff, including social workers and occupational therapists, are ready to support our diverse student community. The Student Hub is your go-to for navigating student life at AUT, providing the support you need from when you apply to after you graduate.

Your home away from home

As a student you'll spend most of your time on campus, whether you're based at an AUT campus in the City, South Auckland or the North Shore. Each campus has its own vibe, and all are connected by shuttle buses or public transport. You'll find everything you need right here, including medical centres, gyms and recreation centres, free and confidential counselling, programmes to develop your self-knowledge and resilience, and community-specific services to make you feel comfortable and safe. Our campuses are monitored 24/7 by our security team.

Your place for support

AUT celebrates diversity and is committed to Te Tiriti o Waitangi with passion, curiosity and pride. We're committed to supporting the aspirations of our Māori and Pacific whānau. We were the first New Zealand university to appoint a full-time rainbow community coordinator, and are proud to be a Pride Pledge university. We support equity of access and opportunity for students, staff and visitors, and follow the principles of Kia Ōrite: Code of Practice for an inclusive tertiary environment that enables disabled, Deaf and neurodivergent students to achieve fully. As an AUT student you can access our specialised community support services, including LGBTTQIA+, disabled and Deaf, high-performance athlete, international, Māori and Pacific student support. The AUT Student Association (AUTSA) advocates and represents your interests, and shares student voices through Debate magazine.

Achieve your academic goals

Our goal is to help you achieve your academic dreams and set you up for a successful career. Our library and learning services support includes learning advisors, workshops, assessment advice appointments, tailored postgraduate research support and tools like Studiosity to help you ace your assessments. At AUT you'll find everything you need for your studies, including computer labs, printers, IT support, free wifi on campus, the full Microsoft 365 suite, LinkedIn Learning and remote access to AUT computers for specialist software. To make sure financial difficulty doesn't get in the way of your academic achievements, our support also extends to help with food or transport vouchers, rent and living expenses, and even laptops and data packages if you experience financial hardship.

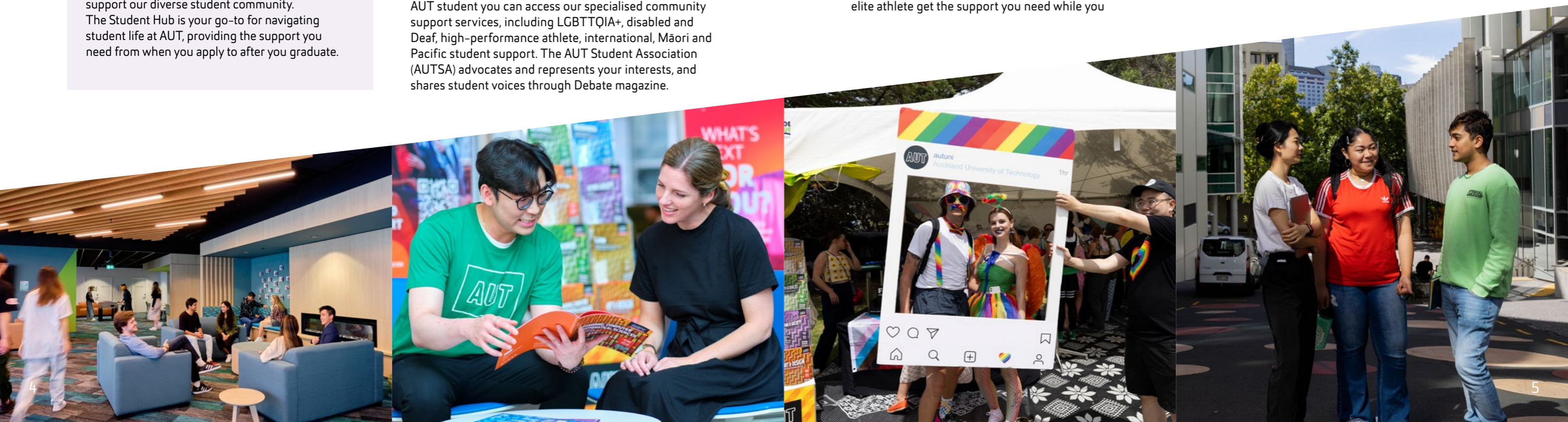
A vibrant uni experience

We want you to make the most of university life, have fun and grow during your time with us. Choose from over 90 student-led social, sustainability, cultural and academic clubs, or perhaps start your own. Participate in social sports, represent AUT through University Tertiary Sport (UTSNZ) and if you're an elite athlete get the support you need while you

compete internationally. Make the most of our state-of-the-art sports facilities at AUT Millennium, on-campus gyms at every campus, and a swimming pool and courts for tennis, volleyball, basketball and other sports at the South Campus. Our Te Āhuru Recreation Centre at the City Campus also has a sports court, dance and exercise studios, flexible spaces for clubs to meet, and large spaces to gather and share food.

Beyond learning and into employability

Our services and award programmes help you become a well-rounded graduate ready to succeed in New Zealand and the world, and support your career after you graduate. Attend employer presentations, events, and workshops throughout the year, and use our four graduate job boards, including for international career options. Develop sought-after skills through volunteering, leadership and employability activities with the AUT Edge and Beyond AUT Awards, or access funding and mentoring through AUT Ventures Limited to commercialise your AUT research. You can also study overseas as part of your degree at one of AUT Global's partner universities around the world.



BA | AK3704

Bachelor of Arts

Overview



Scan this QR code for details about courses, where your study could lead, and stories about our great graduates and students.

With AUT's Bachelor of Arts you'll have the knowledge and skills to contribute actively in the making of a brighter future for yourself, your community and the wider world. Our diverse range of majors and minors is designed to challenge and inspire you. As you gain expert knowledge of your major subject area, you'll strengthen your abilities to think critically, to analyse thoughtfully, to communicate creatively, to engage actively, to research rigorously, and to problem-solve successfully. Your studies, combined with workplace experience opportunities in your final year, will set the stage for you to achieve meaningful careers in Aotearoa New Zealand and around the world.

QUICK FACTS

Level	7
Points	360
Duration	3 years full-time, part-time available
Campus	City
Starts	23 Feb & 13 July 2026

Entry requirements

Minimum entry requirements

- University Entrance or equivalent
- **Interpreting major:** High level of competency in English and one other language. Interview will be required
- **NZ Sign Language - English Interpreting major:** High level of competency in English (NZSL fluency is not required). Interview will be required

English language requirements

- **Interpreting and NZ Sign Language - English Interpreting majors:** IELTS (Academic) 7.0 overall with 7.0 in Writing and Speaking, and 6.5 in Reading and Listening; or equivalent
- **All other majors:** IELTS (Academic) 6.0 overall with all bands 5.5 or higher; or equivalent

Don't meet the entry requirements?

Consider starting with a Diploma in Arts – refer to page 35 for more details.

Useful New Zealand school subjects

All subjects are useful, in particular Art History, Classical Studies, English, Geography, History, Media Studies, Social Studies, Psychology and other languages

1. The Psychology major is bigger than the other Bachelor of Arts majors and makes up half of your degree (180 points). Depending on which subjects you choose to combine with your Psychology major, it may take you a little longer to complete your degree.

What this qualification covers

The Bachelor of Arts is highly flexible and you can build your degree in a way that reflects your interests.

To graduate with a Bachelor of Arts you need to complete:

Core courses (120 points)

These are courses all students in this degree need to take. These courses align with different United Nations Sustainable Development Goals, and you can choose from different courses for each of the core course themes. One of the core courses is the workplace experience you complete in your third year.

Your chosen major (120 points)¹

Your major is the subject area you want to specialise in. This makes up one third of your degree, and usually consists of eight courses related to your chosen subject. You can view the list of majors in this degree on page 8.

Flexible component (120 points)

You can choose one of the following options:

- Two minors (60 points each); or
- A minor (60 points) and elective courses (60 points); or
- A second major (120 points)

Your second major, minor(s) and elective courses can be from the Bachelor of Arts or different AUT degrees.

	YEAR 1	YEAR 2	YEAR 3
SEMESTER 1	Academic Communication 15 PTS	Major course 15 PTS	Major course 15 PTS
	Culture & Society: Partnerships & Reduced Inequalities 15 PTS	Major course 15 PTS	Major course 15 PTS
	Culture & Society: Peace & Justice, Climate Action & Economic World 15 PTS	Flexible component 15 PTS	Flexible component 15 PTS
	Culture & Society: Sustainability, Health & Wellbeing 15 PTS	Flexible component 15 PTS	Flexible component 15 PTS
SEMESTER 2	Culture & Society: Quality Education, Gender Equality & Reduced Poverty 15 PTS	Major course 15 PTS	Major course 15 PTS
	Knowledge & Inquiry 15 PTS	Flexible component 15 PTS	Flexible component 15 PTS
	Major course 15 PTS	Flexible component 15 PTS	Work Integrated Learning 30 PTS
	Major course 15 PTS	Flexible component 15 PTS	

Core courses PTS: Points Core courses are likely to change. For the latest information, visit our website.



"I've always been very interested in psychology and enjoy working with people. Studying both psychology and human resource management means that I can pursue the areas I'm primarily interested in. I'd recommend the Bachelor of Arts to other people due to its flexibility, the way that classes are taught and the array of people you can meet. Additionally, the career paths you can pursue subsequent to study are definitely more malleable than some other areas. The respect that is clearly present at AUT between students, lecturers and tutors is what I've enjoyed the most. It's really nice to know that they're so passionate about their area of teaching, and are happy to be passing on their knowledge and expertise to students."

Laura Jade Watkinson
3rd-year student, Bachelor of Arts in Psychology & Human Resource Management and Employment Relations

Bachelor of Arts

Overview continued

Majors

Choose one of these majors as part of your degree:

- Creative Writing
- Criminology and Criminal Justice
- Culinary Arts
- Education
- Event Management
- Global Tourism
- History
- International Studies
- Interpreting
- Māori Development
- Māori Media
- NZ Sign Language and Deaf Studies
- NZ Sign Language – English Interpreting¹
- Psychology²
- Social Sciences

Refer to pages 10 to 24 for more details on each of these majors.

If you want to include a second major from a different AUT degree, you can see more options on aut.ac.nz/majors-minors

Minors

A minor is smaller than a major. It usually consists of four courses. If you decide to include a minor in your degree, you could choose from:

- Children and Learning
- Conflict Resolution
- Deaf Studies
- Digital Cultures
- Gastronomy
- Hospitality
- Hospitality Enterprise
- Hospitality Management
- New Zealand Sign Language
- Restaurant Management
- Social Education
- Spanish
- Te Reo Māori
- Translation

You can also study the majors listed on the left as a minor.

For more information on each of these minors and to see even more minors from other subjects visit aut.ac.nz/majors-minors

1. This major focuses on New Zealand Sign Language and developing the skills to become an NZSL-English interpreter. It doesn't have the option to include courses from different subjects.

2. The Psychology major is bigger than the other Bachelor of Arts majors and makes up half of your degree (180 points).

Build your degree on our website

Visit our website to build your own degree and see what your three years of study could look like. Simply scan the QR code on page 7.

Possible combinations include:

- Bachelor of Arts in Event Management with minors in Hospitality Management and Marketing (one major, two minors)
- Bachelor of Arts in Social Sciences with a minor in Communication for Social Change (one major, one minor, plus elective courses of your choice)
- Bachelor of Arts in Global Tourism and International Studies (two majors)



1 Get hands-on experience in culinary arts or pâtisserie using our commercial kitchen tools and equipment
 2 Study something that makes a difference – sign language skills are in demand in all areas of New Zealand society
 3 Collaborate with classmates as part of your study
 4 Take a break from studying and enjoy quiet, green spaces on campus
 5 Our primary teaching degree includes 25 weeks of practicum teaching placements
 6 Gain insight into the fast-paced media industry with the Bachelor of Arts in Māori Media



Bachelor of Arts Creative Writing

Scan this QR code for details about courses, where your study could lead, and stories about our great graduates and students.



Are you thinking about writing a novel, short stories, poems or perhaps a memoir? We offer a series of courses that are designed to develop your storytelling skills across a range of genres. You'll use the work you complete in class and while studying independently to produce a creative portfolio, and develop an understanding of how literature functions through analysis and essay writing. You explore style and genre, and the demands of readers, editors and publishers. You develop your skills as a writer; testing your creative ideas in an environment that challenges, critiques and supports you as you go.

What this major covers

YEAR 1

All students in the Bachelor of Arts take a range of core courses that align with different United Nations Sustainable Development Goals. You can choose from different courses for each of the core course themes. You're also introduced to the fundamentals of creative writing and become familiar with contemporary New Zealand texts, and Māori and Pacific literature.

YEAR 2

You further your understanding of creative writing, popular writing genres and experiment with writing in a variety of different genres. You also take courses from your second major, your minor(s) or elective courses.

YEAR 3

You explore new literatures, and plan and create an extended piece of creative writing. You also take the final courses from your second major, minor(s) or elective courses. In the second semester you also complete the Work Integrated Learning course; a supervised work placement related to your major(s), for an organisation of your choice. Recent placements included: Imersia Ltd and Namseoul University. You could also take the Foundations in Research course to prepare you for postgraduate study.

Career opportunities

Roles in the creative and professional writing industries, travel writing, journalism, technical writing, social media content producer.



"I enjoyed the freedom of creation in AUT's arts curriculum. I began with the Creative Writing major because I've always had a passion for writing and connecting with others through language studies. Upon finding I really enjoyed studying at AUT, in my second year I decided to branch out my studies and future into other interests, such as psychology. To me, the practices of creative writing and psychological study are heavily entrenched in each other's practice. For instance, my creative writing capstone project was formatted as a psychological report and featured themes alluding to important narrative and psychological concepts. To have the opportunity to present and reflect upon this project with lecturers and mentors I look up to was extremely fulfilling for me."

Leon Simpson
Final-year student, Bachelor of Arts in Creative Writing & Psychology

Bachelor of Arts Criminology and Criminal Justice

Scan this QR code for details about courses, where your study could lead, and stories about our great graduates and students.



Criminology is the study of crime and its effects on victims and society, and the workings of the criminal justice system including the police, courts and prisons. Criminology is a great choice if you want a career in an organisation associated with the criminal justice system. In this major you develop a sound understanding of criminology in national and international contexts. You explore crime and policing in New Zealand and overseas, approaches to crime prevention and punishment, restorative justice and critical issues facing the criminal justice system.

What this major covers

YEAR 1

All students in the Bachelor of Arts take a range of core courses that align with different United Nations Sustainable Development Goals. You can choose from different courses for each of the core course themes. You're also introduced to criminology and criminal justice, psychology and the role of social, economic and political institutions.

YEAR 2

You become familiar with theories of crime and criminality, policing and punishment, and different social research methods. You also take courses from your second major, your minor(s) or elective courses.

YEAR 3

You advance your understanding of criminology and criminal justice, policing and punishment. You also take the final courses from your second major, minor(s) or elective courses. In the second semester you also complete the Work Integrated Learning course; a supervised work placement related to your major(s), for an organisation of your choice. Recent placements included: Department of Corrections, New Zealand Police, Rethinking Crime and Punishment, TYLA (Turn Your Life Around). You could also take the Foundations in Research course to prepare you for postgraduate study.

Career opportunities

Roles in the Department of Corrections, local authorities, Ministry of Justice, Ministry of Social Development, national and international human rights organisations, New Zealand Customs, New Zealand Police, or non-governmental community groups.



"I wanted a career where I could make a difference to my people. I knew that I wanted to study criminology and Māori development. During my bachelor's degree, we learned about the various issues Māori and Pacific people face throughout the criminal justice system, and how discrimination continues to be perpetuated in society. As a result, I wanted to learn more about navigating the legal system and understand the underlying issues that contribute to an overrepresentation of Māori and Pacific people in the legal system."

Wairua Taru Grant Pukeiti
Cook Island Māori, Te Rarawa, Te Aupouri, Ngāti Hine
Associate, Risk Services Team, PricewaterhouseCoopers (PwC)
Master of Laws with Distinction
Bachelor of Arts (Honours)
Bachelor of Arts in Criminology and Māori Development

Bachelor of Arts Culinary Arts

Scan this QR code for details about courses, where your study could lead, and stories about our great graduates and students.



The culinary arts have changed dramatically over the last three decades. A globalised world, new technologies and increased media coverage mean that culinary arts professionals must think critically and creatively to succeed. Our Culinary Arts major prepares you for these challenges and equips you with the skills to start your own culinary career. This culinary arts degree brings together key culinary techniques and advanced theoretical concepts in food science, technology and ethics. It's designed to develop your creativity and provide the springboard for your career in culinary arts. There's an emphasis on practical and professional skills¹. Because AUT is a member of the Alliance – Institut Lyfe's exclusive network with the world's best hospitality and culinary schools – you could also spend a semester in Lyon, France through the Alliance Summer Programme.

What this major covers

YEAR 1

All students in the Bachelor of Arts take a range of core courses that align with different United Nations Sustainable Development Goals. You can choose from different courses for each of the core course themes. You're also introduced to the contemporary professional culinary environment, and classical culinary principles and practices.

YEAR 2

You further your understanding of different culinary techniques, gastronomy, food service, food and beverage production, and together with your classmates create a culinary event celebrating a global cuisine. You also take courses from your second major, your minor(s) or elective courses.

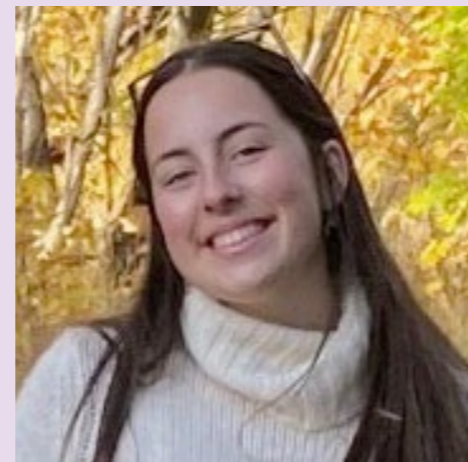
YEAR 3

You advance your understanding of food ethics and sustainability, and contemporary New Zealand cuisine. You also take the final courses from your second major, minor(s) or elective courses. The Advanced Culinary Showcase course is at the heart of your final semester, giving you the opportunity to create and cater for an event. Past students hosted Hope, Strength & Love; a charity fundraising dinner for Breast Cancer Cure. The dinner, a 5-course degustation, was designed with the support of celebrity chefs Ray McVinnie, Ben Bayly and Des Harris.

¹ The practical side of this programme involves learning to use commercial kitchen tools and equipment to a professional level, and requires you to demonstrate a level of awareness and skill that doesn't compromise any health and safety standards. For the full list of capabilities required in culinary arts programmes and courses with operational content, scan the QR code at the top of this page.

Career opportunities

- Artisan food producer
- Consultant
- Owner/operator small business
- Food and beverage manager
- Food stylist
- Product developer
- Professional chef
- Teacher



"I have a passion for cooking and creating exciting new meals, and I enjoy lots of practical work, creativity and learning new recipes. Studying culinary arts will bring me a step closer to my career goal of being a super yacht chef or working in the wedding catering industry. I found AUT provided the best culinary programme in New Zealand and covered the widest range of different cuisines. I also chose AUT because of how welcoming the staff and other students were. In my studies so far, I've enjoyed making new dishes every week, creating new plating ideas and experimenting with different recipes. It makes each week and each lesson something new and exciting."

Georgia Breeze
Ngāpuhi, Ngāti Ruanui
1st-year student, Bachelor of Arts in Culinary Arts with a minor in Te Reo Māori

Bachelor of Arts Education

Scan this QR code for details about courses, where your study could lead, and stories about our great graduates and students.



Interested in learning and how it relates to culture, community, social media and social justice? We've all been to school and probably all have a view on education. This major re-examines these views, and can lead to a variety of careers in the wider education sector.

What this major covers

YEAR 1

All students in the Bachelor of Arts take a range of core courses that align with different United Nations Sustainable Development Goals. You can choose from different courses for each of the core course themes. You also explore critical questions in education, including what education is, how and why today's educational institutions developed, and the role sense of place plays in learning.

YEAR 2

You become familiar with the impact of social media on learning, the links between education and social justice, gender and sexuality in education, and how you can play a role in addressing today's global issues. You also take courses from your second major, your minor(s) or elective courses.

YEAR 3

You explore education philosophies and alternatives to formal schooling, and consider what the future of New Zealand education could look like. You also take the final courses from your second major, minor(s) or elective courses. In the second semester you complete the Work Integrated Learning course; a supervised work placement related to your major(s), for an organisation of your choice. You could also take the Foundations in Research course to prepare you for postgraduate study.

Career opportunities

The skills you develop in this major are valuable for a range of careers, including: social development work, youth and community work, marketing, communications, human resources, the arts, training and mentoring.

There's a direct pathway into teaching as you may qualify¹ for the one-year Master of Teaching and Learning which leads to teacher registration.

¹ You need a B average for entry to the Postgraduate Diploma in Teaching and Learning or B+ average for entry to the Master of Teaching and Learning.



"I believe every young learner deserves access to education and be able to fulfil their potential in this world. I wanted to pass on my knowledge and experience to future rangatahi. I started my journey with AUT in 2016, after previously studying at other universities, and AUT surpassed my expectation in terms of the student experience and the practicalities of studying in modern interactive classrooms. Our lecturers inspired me to look at education not only in the view of teaching, but as experiential and long-life learning. That was one of the lightbulb moments for me."

Joe Lolo
Te Rarawa, Ngāpuhi, Tongan
Case Manager, Ministry of Social Development
Bachelor of Arts in Education with a minor in English and New Media Studies

Bachelor of Arts Event Management

Scan this QR code for details about courses, where your study could lead, and stories about our great graduates and students.



A great event can generate positive publicity, create loyal followers, and leave lasting memories for businesses and tourism cities. Event managers are the architects behind these events. They love to solve problems in a creative and innovative way, have an eye for detail and the ability to work across diverse areas with a team. In this programme, you learn to conceptualise, strategise, design events, project manage and conduct a feasibility study that helps stakeholders evaluate your event for potential funding or execution. Our vast network of industry partners offers you opportunities to gain event workplace experience in your final year.

What this major covers

YEAR 1

All students in the Bachelor of Arts take a range of core courses that align with different United Nations Sustainable Development Goals. You can choose from different courses for each of the core course themes. You're also introduced to finance for hospitality, tourism and events, and learn to create digital media.

YEAR 2

You become familiar with event planning and different types of events, and develop a proposal for an event design. You also take courses from your second major, your minor(s) or elective courses.

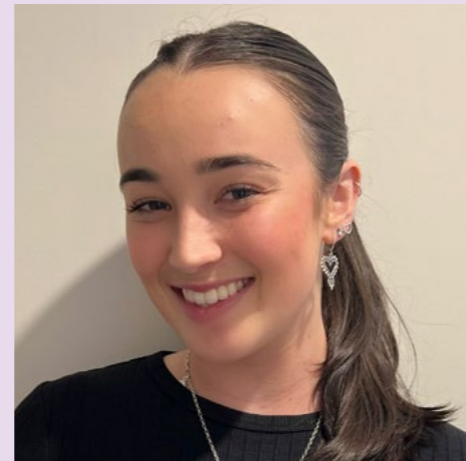
YEAR 3

You explore contemporary issues in event management, leadership principles and how to produce an event, including selecting a venue, building the event team and considering services like catering, lighting and security. You also take the final courses from your second major, minor(s) or elective courses.

In the second semester you also complete the Work Integrated Learning course; a supervised work placement related to your major(s), for an organisation of your choice. Recent placements included Artweek Auckland, Diwali Festival, Total Sport: Trail Running NZ, Villa Maria Event Team and Compass Dance Company. You could also take the Foundations in Research course to prepare you for postgraduate study.

Career opportunities

- Conference organisers
- Event employees in local authorities
- Event manager/assistant manager
- Event marketing
- Festival management
- Trade shows



"The event production course and workplace experience in my third year were what really opened my eyes to the event world in a super practical way. I learned so much by experiencing firsthand what goes into preparing and putting on an event, and putting my knowledge into practice with a professional company during my placement was incredible. Putting together my major in events with my minors in marketing and international business, in my role now I have extensive involvement in running the social media for multiple events, creating and sending email communications, working with new and existing sponsors, rebranding events, conducting a range of surveys, and looking after administrative and registration processes."

Hannah Thorne
Marketing & Customer
Experience Manager, SMC Events
Bachelor of Arts in Event Management
with minors in International Business and
Strategy & Marketing

Bachelor of Arts Global Tourism

Scan this QR code for details about courses, where your study could lead, and stories about our great graduates and students.



Do you believe in a future where tourism is a force for good in the world? If you're interested in global issues in tourism, the Bachelor of Arts in Global Tourism will help you understand how tourism enriches the wellbeing of the communities it engages with and protects the natural environment it relies on. Accredited by the United Nations World Tourism Organization (UNWTO), this degree focuses on creativity and innovation in tourism, and how to create a more ethical and sustainable tourism industry.

What this major covers

YEAR 1

All students in the Bachelor of Arts take a range of core courses that align with different United Nations Sustainable Development Goals. You can choose from different courses for each of the core course themes. You're also introduced to global issues in tourism, and tourism and sustainability.

YEAR 2

You become familiar with the connection between cultural heritage and tourism, ethics and the impact of tourism on natural areas. You also complete a field study of a tourism destination in New Zealand or the South Pacific. You also take courses from your second major, your minor(s) or elective courses.

YEAR 3

You advance your understanding of sustainable tourism management and innovation in tourism, and work with an industry partner or community partner to plan an initiative to address a global issue in tourism. You also take the final courses from your second major, minor(s) or elective courses.

In the second semester you also complete the Work Integrated Learning course; a supervised work placement related to your major(s), for an organisation of your choice. Recent placements have included Air New Zealand, Disney, Auckland Unlimited and Auckland Sea Kayaks. You could also take the Foundations in Research course to prepare you for postgraduate study.

Career opportunities

Graduates could work in:

- Government
- Destination marketing organisations
- Operations management
- Industry and trade organisations in tourism and hospitality
- Social enterprises
- Community leadership
- Conservation
- UN agencies
- Business owner/operators



"Since I was very young I've been passionate about events, travels and hospitality, and more recently I've also become interested in sustainable tourism. My dream career is to be a project manager in the event, hospitality or tourism industry back home in French Polynesia, and to live it to the fullest, trusting myself and trusting life. I've enjoyed talking to my lecturers about their previous careers, and asking them for feedback to help me be better and more efficient in my assessments and personal journey. The AUT lecturers are amazing and encourage us to succeed in our future career. I've also found the classes and studying spaces very comfortable, and have met classmates who are very nice and very sociable."

Kim Keromen
2nd-year student, Bachelor of Arts in
Event Management and Global Tourism

Bachelor of Arts History

Scan this QR code for details about courses, where your study could lead, and stories about our great graduates and students.



Understand the past to change the future with a major in history. With the Bachelor of Arts in History you delve into the history of New Zealand and major events in our world over the centuries and develop advanced skills in research, writing, analysis and debate. All history courses are offered online; making it easy to fit your studies into the rest of your life.

What this major covers

YEAR 1

All students in the Bachelor of Arts take a range of core courses that align with different United Nations Sustainable Development Goals. You can choose from different courses for each of the core course themes. You're also introduced to historic events from New Zealand or global history.

YEAR 2

You further your understanding of Te Tiriti o Waitangi, and can choose from courses on oral histories, the history of Tāmaki Makaurau Auckland, and Tā Moko. You also take courses from your second major, your minor(s) or elective courses.

YEAR 3

You study advanced level courses related to history and historical methods, and take the final courses from your second major, minor(s) or elective courses. In the second semester you also complete the Work Integrated Learning course; a supervised work placement related to your major(s), for an organisation of your choice. You could also take the Foundations in Research course to prepare you for postgraduate study.

Career opportunities

- History teacher
- Diplomat
- Heritage manager
- Museum/gallery curator
- Journalist
- Policy specialist
- Civil servant
- Researcher
- Content producer

Bachelor of Arts International Studies

Scan this QR code for details about courses, where your study could lead, and stories about our great graduates and students.



To contribute to the increasing globalisation of the world, countries need people who understand the impact of global trends and issues, and can interact effectively in a multicultural environment. The International Studies major helps you develop the skills to contribute effectively in this changing global environment, and interact with people with different backgrounds and world views. You'll have plenty of opportunities to apply what you've learnt and could gain valuable international experience by going on a student exchange or taking part in our Spanish Overseas Experience, which enables you to study and work in Spain.

What this major covers

YEAR 1

All students in the Bachelor of Arts take a range of core courses that align with different United Nations Sustainable Development Goals. You can choose from different courses for each of the core course themes. You're also introduced to the importance of intercultural competence in our modern world.

YEAR 2

You further your understanding of global issues, and can choose from a range of courses related to different languages and cultures. You also take courses from your second major, your minor(s) or elective courses.

YEAR 3

You study advanced level courses related to international studies, and take the final courses from your second major, minor(s) or elective courses. In the second semester you also complete the Work Integrated Learning course; a supervised work placement related to your major(s), for an organisation of your choice. Recent placements included: Red Cross, Office of Ethnic Communities, New Zealand AIDS Foundation (NZAF) – African Programme; The Palestinian Federation, Chile; ANZ Bank. You could also take the Foundations in Research course to prepare you for postgraduate study.

Career opportunities

Careers that involve interaction with people from other cultures, including: business, diplomatic service¹, health, justice system, media, national and international human rights organisations, social work, translation and interpreting².

1. With the relevant pathway.
2. With relevant translation and interpreting courses.



"Growing up, I developed a fascination for the world and its cultures, languages and customs. After high school and much research, I realised that pursuing a degree in international studies would allow me to gain knowledge of the world and all its wonder. My studies offered me a chance to explore diverse cultures and uncover parallels with my own. I was fortunate to make many international friends. What I learned through my studies also helped me tremendously in my final-year workplace experience. Since my placement involved a great deal of grant writing to international and regional development organisations and Palau's diplomatic allies, my degree proved very useful."

Uong Jameson Yalap
Sustainable Development Assistant, United Nations Economic and Social Commission for Asia and the Pacific (UNESCAP), Koror, Palau
Bachelor of Arts in International Studies with a minor in Social Sciences

Bachelor of Arts Interpreting

Scan this QR code for details about courses, where your study could lead, and stories about our great graduates and students.



Interpreting is so much more than just repeating someone’s words in a different language. A good interpreter can understand nuances and cultural appropriateness, and convey levels of formality across a range of professions and industries. The challenge is to do justice to every situation. In the Interpreting major you learn to recognise cross-cultural implications for interpreting, and the ethical and professional responsibilities of an interpreter. Throughout your studies you also become familiar with interpreting for legal, healthcare, business and other community settings. AUT’s Bachelor of Arts in Interpreting is an NZSTI and NAATI Endorsed Qualification.

What this major covers

YEAR 1

All students in the Bachelor of Arts take a range of core courses that align with different United Nations Sustainable Development Goals. You can choose from different courses for each of the core course themes. You’re also introduced to critical media studies and how human relationships are constructed through language.

YEAR 2

You further your understanding of effective communication, the role of the interpreter, and societal contexts for interpreting and translation. You also take courses from your second major, your minor(s) or elective courses.

YEAR 3

You study advanced level courses related to interpreting, and focus on either health or legal interpreting. You also take the final courses from your second major, minor(s) or elective courses. In the second semester you also complete the Work Integrated Learning course; a supervised work placement related to your major(s), for an organisation of your choice. You could also take the Foundations in Research course to prepare for postgraduate study.

Career opportunities

Legal interpreting for government and local authorities, health interpreting, freelance interpreting work, foreign affairs and border control, remote interpreting service providers, refugee and migrant services.



“I chose the interpreting programme at AUT because it had the longest history and the best reputation. One of the main highlights for me was the opportunity to study in such a diverse environment. Coming from Argentina, I had never been in a classroom where so many languages and cultures were represented. As a community interpreter now, I sometimes work in the courts, at appointments with a variety of medical specialists, family and employment mediation processes, and immigration interviews. I also work as a conference interpreter, offering simultaneous interpreting services both in a booth on location and online through Zoom. I sometimes also offer professional development workshops for interpreters.”

Agustina Marianacci
Freelance Translator and Interpreter
Master of Language and Culture
Graduate Diploma in Arts

Bachelor of Arts Māori Development

Scan this QR code for details about courses, where your study could lead, and stories about our great graduates and students.



Think critically about the role of Māori language and culture in Aotearoa New Zealand with a major in Māori Development. You’ll become skilled in effective communication, analysis and research, and gain a strong foundation in tikanga and te reo Māori. As part of your studies you have many opportunities to collaborate, apply your knowledge and test new technologies.

What this major covers

YEAR 1

All students in the Bachelor of Arts take a range of core courses that align with different United Nations Sustainable Development Goals. You can choose from different courses for each of the core course themes. You also further your understanding of Māori development and Māori language.

YEAR 2

You advance your knowledge of Māori development and Māori language, and can select from a wide range of courses related to these topics. You also take courses from your second major, your minor(s) or elective courses.

YEAR 3

You study advanced level courses related to Māori development, and take the final courses from your second major, minor(s) or elective courses. In the second semester you also complete the Work Integrated Learning course; a supervised work placement related to your major(s), for an organisation of your choice. Recent placements included: tribal organisations, community organisations and government agencies. You could also take the Foundations in Research course to prepare for postgraduate study.

Career opportunities

Consultant – policy and strategic planning, entrepreneur, government and local authorities, iwi business development and resource management, private enterprise, research assistant, small business management, social services, teaching, tourism and events management.



“I did this degree because I wanted to learn new skills to be able to help my people, learn more about my culture and be able to use my biggest strengths as Māori in my personal and professional life. The atmosphere at AUT felt welcoming and colourful, and from the first day the staff and students were so supportive. Coming from a small town and a small school in the Hawke’s Bay, and then moving and studying in the Auckland CBD was so interesting and learning to navigate this new space was a journey. I made some great friends while I was at AUT. We all came from similar backgrounds and were all in this to do better for ourselves and our whānau.”

Maia Hemara-Tylden
Ngāpuhi, Ngāti Rangī
Administrator, Whenua Services
Te Tumu Paeroa – Office of the Māori
Trustee, Wellington
Bachelor of Arts in Māori Development with
a minor in Education

Bachelor of Arts Māori Media

Scan this QR code for details about courses, where your study could lead, and stories about our great graduates and students.



Gain insight into the fast-paced media industry, as well as a sound understanding of te reo me ngā tikanga Māori. A strong foundation in te reo Māori and basic tikanga is highly valued in the media field – regardless of ethnicity. You explore the power of storytelling and the art of content creation, and learn to apply a Māori view to the world of media from a bicultural perspective.

What this major covers

YEAR 1

All students in the Bachelor of Arts take a range of core courses that align with different United Nations Sustainable Development Goals. You can choose from different courses for each of the core course themes. You also further your understanding of the Māori media industry and telling Māori stories through different media.

YEAR 2

You advance your knowledge of Māori media, with a specific focus on creating content from a te ao Māori perspective. You also take courses from your second major, your minor(s) or elective courses.

YEAR 3

You study advanced level courses related to Māori media, and work on Māori film or media projects. You also take the final courses from your second major, minor(s) or elective courses. In the second semester you also complete the Work Integrated Learning course; a supervised work placement related to your major(s), for an organisation of your choice. Recent placements included: Whakaata Māori, Auckland Museum, Kura Productions, Ngā Aho Whakaari, South Seas Film and Television School, and Tangata Whenua Television. You could also take the Foundations in Research course to prepare you for postgraduate study.

Career opportunities

Broadcasting, government and local authorities, marketing and sales, multimedia development, production and filming (sound, lighting, producing, directing, scripting, editing), public relations, radio, te reo/cultural advisor and presenter.



“For those who care about creativity in Aotearoa, this degree provides an excellent opportunity to see a little more of the iceberg that is the Māori media industry in New Zealand. I decided to come to AUT because the scope of classes provided in this course didn’t seem to be offered anywhere else. I also like that the Māori media degree centres Māori kaiako to do what they do best. The lecturers in many of my classes have made studying worthwhile and there’s plenty of opportunities to get involved to varying degrees. Once I graduate, I’m looking to get involved in creative, multimedia storytelling in as many capacities as possible.”

Astrid Whiteside
Ngāi Tahu
2nd-year student, Bachelor of Arts in Māori Media & Creative Writing

Bachelor of Arts New Zealand Sign Language and Deaf Studies

Scan this QR code for details about courses, where your study could lead, and stories about our great graduates and students.



New Zealand Sign Language is an official language of New Zealand, and an understanding of sign language and Deaf culture is useful for many careers. This major covers communication strategies in NZSL and the cultural knowledge to work with Deaf clients and colleagues. Sign language skills are in demand in all areas of New Zealand society, including education, health, legal and social service settings, as well as any customer-facing area of work.

What this major covers¹

YEAR 1

All students in the Bachelor of Arts take a range of core courses that align with different United Nations Sustainable Development Goals. You can choose from different courses for each of the core course themes. You also become familiar with New Zealand Sign Language and Deaf culture.

YEAR 2

You further your understanding of New Zealand Sign Language and Deaf culture, and also take courses from your second major, your minor(s) or elective courses.

YEAR 3

You study advanced level courses related to New Zealand Sign Language and Deaf culture. You also take the final courses from your second major, minor(s) or elective courses. In the second semester you also complete the Work Integrated Learning course; a supervised work placement related to your major(s), for an organisation of your choice. Recent placements included: Auckland Deaf Society, Ko Taku Reo Deaf Education New Zealand, and SignDNA. You could also take the Foundations in Research course to prepare you for postgraduate study.

Career opportunities

Professionals working with Deaf clients, colleagues, students, as well as any customer-facing profession. For example: teachers, health professionals, hospitality professionals, disability service coordinators, social workers, lawyers.



“One course that particularly resonated with me included writing an essay about comparing my hearing self to my Deaf self. It was then that I discovered my identity after realising how both worlds were very similar. In my work now, I advocate strongly to ensure my turi tangata whaiora receive the same treatment in all services as if they were hearing. This role brings me such satisfaction on so many levels, promoting New Zealand Sign Language, Deaf culture and Deaf awareness internally and externally. Observing my turi tangata whaiora as they develop into strong, more confident and independent people is incredible.”

Kathy O'Carroll
Te Atiawa, Waitara
Community Support Worker,
Emerge Aotearoa, Hamilton
Bachelor of Arts in New Zealand Sign Language and Deaf Studies

1. If you have a secondary school qualification in New Zealand Sign Language you may be exempt from one or more courses at the introductory level and go straight into higher level courses, subject to a placement test. You then need to make up the points with other courses.

Bachelor of Arts

New Zealand Sign Language – English Interpreting

Scan this QR code for details about courses, where your study could lead, and stories about our great graduates and students.



Professional NZSL-English interpreters are in high demand in New Zealand, and AUT is the only university where you can train to become a qualified NZSL-English interpreter. This major prepares you for this rewarding career by familiarising you with the Deaf community and culture, and helping you achieve proficiency in New Zealand Sign Language. You develop interpreting skills for a wide range of settings, and explore the ethical issues of sign language interpreting.

What this major covers¹

YEAR 1

The first year focuses on developing fluency in New Zealand Sign Language (NZSL), and an awareness of the Deaf world: Deaf people, Deaf culture and history. You gain an understanding of Deaf experiences through real-life interactions with Deaf people throughout the year.

YEAR 2

You further your understanding of NZSL through more advanced language courses, and begin your interpreting courses. You learn about the role of an interpreter, ethical decision-making and different contexts for NZSL-English interpreting. You also do your first practical interpreting course, focused on interpreting one-on-one conversations.

YEAR 3

This year you focus almost entirely on practical interpreting courses, developing your skills, professionalism and your ability to reflect on your own work. In the first semester, you observe interpreters at work in the community and online, and then in the second semester you'll be out interpreting in a variety of settings yourself, supported by your future colleagues. Recent placements included community workshops, sports events, pōwhiri, primary school classrooms and health appointments.

Career opportunities

Interpreting settings in the Deaf community including: health, education, social services, events, employment and the arts.



"I'm a CODA – a child of Deaf adults – and I'm Māori, so being able to step into not two worlds but three has been a challenging journey. I've watched interpreters all my life and felt in awe of their talent and skills, and wondered what it would be like to be in their shoes. I wanted to be able to give back to the Deaf community that has given me this gift. In my studies so far, I've enjoyed learning new things about the Deaf community's history and the linguistic side of New Zealand Sign Language and English. In my future, I see myself setting up an interpreting service organisation for Māori Deaf to improve access for Māori Deaf and connect them back to their whenua."

Rebecca Peri

Te Rarawa, Ngāti Porou

3rd-year student, Bachelor of Arts in New Zealand Sign Language – English Interpreting

1. If you have a secondary school qualification in New Zealand Sign Language you may be exempt from one or more courses at the introductory level and go straight into higher level courses, subject to a placement test. You then need to make up the points with other courses.

Bachelor of Arts

Psychology

Scan this QR code for details about courses, where your study could lead, and stories about our great graduates and students.



This major looks at psychology within the context of our society, where we live and work. An understanding of psychology is useful for a wide range of careers – including career and employment counselling, community development, management, marketing and communications, politics, public health promotion, or training and development. The Psychology major has a strong research component and can provide the foundation for the postgraduate studies required for registration as a psychologist.

What this major covers

YEAR 1

All students in the Bachelor of Arts take a range of core courses that align with different United Nations Sustainable Development Goals. You can choose from different courses for each of the core course themes. You're also introduced to the theory, research and practice of psychology.

YEAR 2

You further your understanding of psychology and become familiar with different approaches and topics within psychology. You also take courses from your second major, your minor(s) or elective courses.¹

YEAR 3

You study advanced level courses related to psychology, and take the final courses from your second major, minor(s) or elective courses. In the second semester you also complete the Work Integrated Learning course; a supervised work placement related to your major(s), for an organisation of your choice. Recent placements included: Anxiety New Zealand, Auckland City Mission, Red Cross and Women's Health Action. You could also take the Capstone Research Project course to prepare you for postgraduate study.

1. The Psychology major is bigger than the other Bachelor of Arts majors and makes up half of your degree (180 points). Depending on which subjects you choose to combine with your Psychology major, it may take you a little longer to complete your degree.

Career opportunities

- Career and employment counselling
- Community development
- Management, marketing and communications
- Politics
- Psychologist¹
- Public health promotion

1. Psychologists are professionals who have completed undergraduate studies in psychology, followed by postgraduate qualifications in a specialist area of professional practice in psychology.



"Psychology has been an interest of mine since I began high school. I'm extremely interested in the field of neuropsychology. In the future, I'd love to be involved in research that uses tools like functional magnetic resonance imaging (MRI) to study the brain as it reacts to various stimuli and scenarios. I've found that the people at AUT are down-to-earth and friendly, which has enabled me to make friendships that have helped me through my years of study. Additionally, the opportunities for study that AUT offers have helped me understand psychology and the brain in a way I wouldn't have been able to without access to AUT's resources."

Yousif Bahr Aliloom

3rd-year student, Bachelor of Arts in Psychology with a minor in Management and Leadership

Bachelor of Arts
Social Sciences



Scan this QR code for details about courses, where your study could lead, and stories about our great graduates and students.

In this major you develop a sound understanding of the interplay between social forces, economics, and politics. You explore power dynamics, influences on decision making, demographic and behavioural trends, and the challenges caused by economic, political and social disadvantage. Along with the depth of understanding you'll gain, you'll develop critical analysis and problem-solving skills, which are crucial for the public service, social sector and community organisations; all areas where many of our graduates start their successful careers.

What this major covers

YEAR 1

All students in the Bachelor of Arts take a range of core courses that align with different United Nations Sustainable Development Goals. You can choose from different courses for each of the core course themes. You're also introduced to social sciences, how social thinking has shaped societal and governmental responses to policy problems, and the role social institutions play.

YEAR 2

You explore social research methods, and further your understanding of the social sciences with a focus on social and political institutions, and the causes and consequences of social change. You also take courses from your second major, your minor(s) or elective courses.

YEAR 3

You study advanced level courses related to social sciences, and take the final courses from your second major, minor(s) or elective courses. In the second semester you also complete the Work Integrated Learning course; a supervised work placement related to your major(s), for an organisation of your choice. Recent placements included: ASB Bank, CCS Disability Action, Goodman Fielder, Love to Live, NZ Council of Trade Unions. You could also take the Foundations in Research course to prepare you for postgraduate study.

Career opportunities

Community work, local government, non-governmental organisations, policy analysis, research, further study in social work and foreign affairs.



"What I enjoyed the most about my studies was being able to pursue contemporary topics for various assignments – from intergenerational injustice to climate policy and economic theories that are sustainable and regenerative by design. I found my passion for public service during the introductory lecture for Culture and Society and felt inspired to work in public policy in the climate governance and economics space. I was working as a governance advisor for Auckland Council throughout the final year of my degree and completed a summer policy internship with the Ministry of Business Innovation and Employment (MBIE). Since graduating, I've moved to Wellington and am working within MBIE's trade and international team."

Karen Ishikawa
Associate Policy Advisor, Ministry of Business Innovation and Employment, Wellington
Bachelor of Arts in Social Sciences and Psychology



Bachelor of Education ([Specialty] Teaching) Overview

BEd([Specialty]Tchg) | AK3594

QUICK FACTS

Level	7
Points	360
Duration	3 years full-time, part-time available
Campus	North & South ¹
Starts	23 Feb 2026

Teachers play an essential role in motivating, inspiring and educating young people who will go on to shape the future of our society. At AUT, you can prepare yourself for a career in early childhood or primary/intermediate education, and learn from staff who are passionate about teaching. Our three-year teaching programmes include 25 weeks of teaching placements, so you can get first-hand experience in early learning services or schools, and graduate with confidence in your skills. For those interested in Pacific primary or Pacific early childhood teaching, there are courses that specifically focus on this specialty.

Entry requirements

Minimum entry requirements

University Entrance or equivalent²

Teaching Council requirements

You also need to successfully complete the compliance checks below before you can start your studies:

- Literacy and numeracy assessments
- Interview
- Meet the “good character and fitness” criteria stipulated in the Teaching Council of Aotearoa New Zealand’s registration and certification policy
- Initial Teacher Education (ITE) Programme Entry Form
- Police vetting (New Zealand and overseas if applicable)
- Satisfactory references
- Meet the Teaching Council’s English language competency requirements
- Meet the safety check requirements as set out in section 31 of the Children’s Act 2014

After you’ve applied to study at AUT, we’ll send you a link to explain the Teaching Council requirements you need to meet. This process can take approximately six weeks as some of the compliance checks take time.

Useful New Zealand school subjects

All subjects are useful, in particular Art History, Classical Studies, Drama, Economics, English, Geography, History, Mathematics, Science (Biology, Chemistry, Physics), Technologies, Te Reo Māori, Te Reo Rangatira, Visual Arts, Digital Technologies, Health Education and Physical Education

Scan this QR code for details about courses, where your study could lead, and stories about our great graduates and students.



What this qualification covers

You choose to study teaching for either:

- Early childhood education or
- Primary and intermediate schools

For more details about these specialties refer to pages 28 and 29.

If you’re interested in working with Pacific children, apply for either the Early Childhood or Primary specialty. You can include Pacific-related courses and practicum placements as part of your degree.

	YEAR 1	YEAR 2	YEAR 3
SEMESTER 1	Te Reo Māori & Tikanga I <small>7.5 PTS</small>	Te Reo Māori & Tikanga III <small>7.5 PTS</small>	Te Reo Māori & Tikanga IV <small>7.5 PTS</small>
	Development of the Child in Aotearoa <small>15 PTS</small>	Tapasā: Working with Pacific Learners <small>15 PTS</small>	Inclusive Education <small>15 PTS</small>
	Past & Present Perspectives of Aotearoa <small>15 PTS</small>	Ako: Learning and Teaching <small>15 PTS</small>	Specialty curriculum course <small>15 PTS</small>
	Specialty curriculum course <small>15 PTS</small>	Specialty curriculum course <small>15 PTS</small>	Specialty enrolment course <small>15 PTS</small>
	Specialty Practicum I <small>7.5 PTS</small>	Specialty Practicum III <small>7.5 PTS</small>	Specialty Practicum V <small>7.5 PTS</small>
SEMESTER 2	Te Reo Māori & Tikanga II <small>7.5 PTS</small>	Ka Hāpaitia: Māori Success & Aspirations in Education <small>15 PTS</small>	Global Citizenship Education <small>15 PTS</small>
	People, Whānau & Communities of Aotearoa <small>15 PTS</small>	Specialty curriculum course <small>15 PTS</small>	Specialty curriculum course <small>15 PTS</small>
	Specialty curriculum course <small>15 PTS</small>	Specialty curriculum course <small>15 PTS</small>	Specialty enrolment choice <small>15 PTS</small>
	Specialty curriculum course <small>15 PTS</small>	Specialty curriculum course <small>15 PTS</small>	Specialty Practicum VI <small>15 PTS</small>
	Specialty Practicum II <small>7.5 PTS</small>	Specialty Practicum IV <small>15 PTS</small>	

Core courses PTS: Points



“I chose this degree because I had such good role models in my teachers when I was growing up. I now want to be that role model for future students, especially for refugee students. I love having an influence on future generations – it’s such a rewarding job seeing children grow and become happy learners. After looking at different universities, I chose AUT because I found that it had the most diverse student base, and the staff were very kind and understanding. In my studies so far, I’ve been able to gain knowledge on many things, including child psychology, learning disabilities and different cultures. I love watching children learn new things and watching how excited they become once they understand something. I’d 100% recommend teaching to everyone.”

Rhoda Habtom Tesfazghi
3rd-year student, Bachelor of Education (Primary Teaching)

1. South Campus is an option for Primary Teaching students only
2. You can't use Discretionary Entrance to gain admission to this programme.

Bachelor of Education Early Childhood Teaching

Scan this QR code for details about courses, where your study could lead, and stories about our great graduates and students.



This specialty is designed for students who want to work as an early childhood teacher in early learning services. If you study early childhood teaching you develop the character, understanding and skills to be a teacher of children in the 0-5 age range. You'll develop your understanding of early childhood education and the early childhood teaching national curriculum, *Te Whāriki*. When you graduate, you will be eligible to apply for registration with the Teaching Council of Aotearoa New Zealand.

If you're interested in working with Pacific children/Pacific early learning services, you can include Pacific-related courses and teaching placements as part of your degree. Scan the QR code above for details on these courses.

What this major covers

YEAR 1

You become familiar with children's development and Aotearoa New Zealand's diverse society. You also build an understanding of this country's education history and will be introduced to te reo Māori and tikanga. You learn about the early childhood curriculum, *Te Whāriki*, and teaching and learning for infants, toddlers and young children in early childhood education. You also undertake two teaching placements working with children from 0-5 years in a range of early learning services.

YEAR 2

You further your understanding of learning and teaching in early childhood education, the social nature of learning, how to best support infants, toddlers and young children in their learning, the role of verbal and non-verbal communication, and educational and cultural needs of Māori and Pacific learners. You also undertake another two teaching placements working with children from 0-5 years in a range of early learning services.

YEAR 3

In your final year you advance your knowledge of care and education for infants, toddlers and young children, inclusive education, global citizenship education and the role of a teacher in creating change in education. You can also choose from courses on a variety of topics related to early childhood education, including courses focusing on Pacific learners. You also undertake your final two teaching placements working with children from 0-5 years in a range of early learning services.

Career opportunities

- Graduates are eligible to apply for provisional teacher registration
- Teaching in a mainstream early learning service
- With experience, management of an early learning service



"Working with children is my favourite occupation because they make me happy just by being around them. They help me forget about any issues and constantly make me smile. It makes me glad to be able to support children in their life development, nurture and empower them in meaningful ways, so they can face and conquer the problems of the future. I'd absolutely recommend this degree to others because it has taught me so much about life lessons, and how children learn and think differently. The most interesting thing I've learnt has been how to assist children with special needs. It's also taught me a lot about how children are learning in general."

Chia Ngo Aye Phuting (Jessica)
Early Childhood Educator, MyKindy
Bachelor of Education (Early Childhood Teaching)

Bachelor of Education Primary Teaching

Scan this QR code for details about courses, where your study could lead, and stories about our great graduates and students.



If you want to become a primary or intermediate school teacher, this specialty provides you with the skills to teach in primary teaching settings. The courses are designed for students who have a passion for working with children between 5 and 12 years in primary and intermediate schools. When you graduate, you will be eligible to apply for registration with the Teaching Council of Aotearoa New Zealand.

If you're interested in working with Pacific children, you can include Pacific-related courses and teaching placements as part of your degree. Scan the QR code above for details on these courses.

What this major covers

YEAR 1

You become familiar with children's development and Aotearoa New Zealand's diverse society. You also build an understanding of this country's education history and will be introduced to te reo Māori and tikanga. You learn about the New Zealand curriculum and how to design appropriate learning experiences in English, mathematics, the arts and physical education. You also undertake two teaching placements working with children aged between 5 and 12 years in primary and intermediate schools.

YEAR 2

This year you become more familiar with learners and the social nature of learning, working with Māori and Pacific learners, and specific subjects in the New Zealand curriculum, including STEAM, reading and mathematics. You also undertake another two teaching placements working with children aged between 5 and 12 years in primary and intermediate schools.

YEAR 3

In your final year you further your understanding of the teacher's role in creating positive change in education to support learners. Courses cover inclusive education, global citizenship education, technology and innovation, mathematics and children's literature plus two self selected options. You also undertake your final two teaching placements working with children aged between 5 and 12 years in primary and intermediate schools.

Career opportunities

- Graduates are eligible to apply for provisional teacher registration
- Teaching in a primary or intermediate school



"From as young as I can remember, teaching has always been my dream career. I wanted to be in a position where I can guide, support and encourage the tamariki of Aotearoa and be an example that anyone can turn their dreams into reality. What I liked about studying at AUT is that it's the sort of place where you can express yourself freely within a safe environment, across all three campuses. From the day I first enquired about my possibility of studying at AUT to my very last day behind a computer screen, the staff and wider student community have supported, encouraged and pushed me to achieve great things. At AUT, you're definitely not just a number, you are you!"

Kalen Chase
Ngāti Porou, Ngāti Kahungunu,
Ngāphui, Taranaki Tūturu
Math & Form Teacher,
Manurewa Intermediate School
Bachelor of Education (Primary Pasifika Teaching)

Bachelor of International Hospitality Management

Overview

BIHM | AK3708

QUICK FACTS

Level	7
Points	360
Duration	3 years full-time, part-time available
Campus	City
Starts	23 Feb & 13 July 2026

With a hospitality degree you can take your career anywhere. Hospitality careers cover everything from creating experiences for people in some of the world's most exciting and exotic destinations to hosting, accommodating and managing events. The degree is widely recognised and acclaimed by the country's top hospitality and tourism operators. You learn to manage food and beverage, and accommodation operations and develop key skills in human resource management, strategic management, and sales and marketing. Your final year includes valuable workplace experience, working with an organisation on a project related to your studies. Because AUT is a member of the Alliance – Institut Lyfe's exclusive network with the world's best hospitality and culinary schools – you could also spend a semester in Lyon, France through the Alliance Summer Programme.

Entry requirements

Minimum entry requirements

University Entrance or equivalent

Useful New Zealand school subjects

All subjects are useful, in particular Art History, Classical Studies, Drama, English, Geography, Health Education, History, Media Studies, Social Studies, Te Reo Māori and Te Reo Rangatira

English language requirements

IELTS (Academic) 6.0 overall with all bands 5.5 or higher; or equivalent

Other requirements

The practical side of this programme involves working in front of house in our two training restaurants, and learning to use commercial kitchen tools and equipment to a professional level without compromising health and safety standards.

Don't meet the entry requirements?

Consider starting with a Diploma in Arts – refer to page 35 for details.



Scan this QR code for details about courses, where your study could lead, and stories about our great graduates and students.

What this qualification covers

The Bachelor of International Hospitality Management is highly flexible and you can build your degree in a way that suits you and your interests.

To graduate with a Bachelor of International Hospitality Management you need to complete:

Core courses (120 points)

These are courses all students in this degree need to take, and cover fundamental hospitality principles. One of the core courses is the workplace experience you complete in your third year.

Your chosen major (120 points)

Your major is the subject area you want to specialise in. This makes up one third of your degree, and usually consists of eight courses related to your chosen subject. You can view the majors available in this degree on page 32.

Flexible component (120 points)

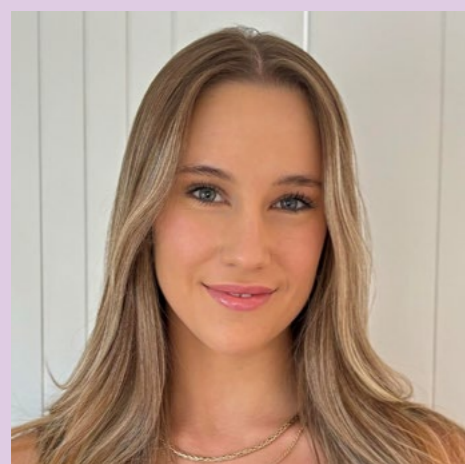
You can choose one of the following options:

- Two minors (60 points each); or
- A minor (60 points) and elective courses (60 points); or
- A second major (120 points)

Your second major, minor(s) and elective courses can be from hospitality or different AUT degrees.

	YEAR 1	YEAR 2	YEAR 3
SEMESTER 1	Applied Food and Beverage Management (Restaurant) 15 PTS	Critical Hospitality Perspectives 15 PTS	Hospitality Innovation Competition 15 PTS
	International Hospitality Management 15 PTS	Major course 15 PTS	Major course 15 PTS
	Major course 15 PTS	Major course 15 PTS	Flexible component 15 PTS
	Major course 15 PTS	Flexible component 15 PTS	Flexible component 15 PTS
SEMESTER 2	Major course 15 PTS	Major course 15 PTS	Work Integrated Learning 60 PTS
	Major course 15 PTS	Flexible component 15 PTS	
	Flexible component 15 PTS	Flexible component 15 PTS	
	Flexible component 15 PTS	Flexible component 15 PTS	

Core courses PTS: Points



"The amazing thing about my degree is that it doesn't limit you to one career sector. The Bachelor of International Hospitality Management opens doors to so many avenues, even more so with the flexibility to include subjects from across AUT. I decided to major in hospitality management and marketing as I believe the two subjects can be interrelated, providing so many options for my future career. I've been able to incorporate marketing aspects into my hospitality management courses, reaping maximum benefits from both subjects. The combination of theory and practical components truly makes this degree stand out. I'd highly recommend this degree to anyone who wants to grow their expertise in one of the biggest sectors in New Zealand."

Sarah Miller
3rd-year student, Bachelor of International Hospitality Management in Hospitality Management and Marketing

Bachelor of International Hospitality Management

Overview continued

Majors

Choose one of these majors as part of your degree:

- Hospitality Enterprise
- Hospitality Management

Refer to pages 33 and 34 for more details on each of these majors.

If you want to include a second major in your degree, you can choose another subject from the list above or can see more options from different AUT degrees on aut.ac.nz/majors-minors

Minors

A minor is smaller than a major. It usually consists of four courses. If you decide to include a minor in your degree, you could choose from:

- Children and Learning
- Conflict Resolution
- Creative Writing
- Criminology and Criminal Justice
- Deaf Studies
- Digital Cultures
- Education
- Event Management
- Gastronomy

- Global Tourism
- History
- Hospitality Enterprise
- Hospitality Management
- International Studies
- Interpreting
- Māori Development
- Māori Media
- New Zealand Sign Language
- New Zealand Sign Language and Deaf Studies
- Psychology
- Restaurant Management
- Social Data Analytics
- Social Education
- Social Sciences
- Spanish
- Te Reo Māori

For more information on each of these minors and to see even more minors from other subjects visit aut.ac.nz/majors-minors



Build your degree on our website

Visit our website to build your own degree and see what your three years of study could look like. Simply scan the QR code on page 31.

Possible combinations include:

- Bachelor of International Hospitality Management in Hospitality Management with minors in Event Management and Global Tourism (one major, two minors)
- Bachelor of International Hospitality Management in Hospitality Enterprise with a minor in Restaurant Management (one major, one minor, plus elective courses of your choice)
- Bachelor of International Hospitality Management in Hospitality Enterprise and Marketing (two majors)

Bachelor of International Hospitality Management

Hospitality Enterprise

Scan this QR code for details about courses, where your study could lead, and stories about our great graduates and students.



Learn to manage both customers and employees, and find out what it takes to create memorable hospitality experiences. The Hospitality Enterprise major focuses on the development of hospitable employee and customer experiences. You'll explore strategies to improve staff wellbeing and propose innovative ways to create sustainable futures for the hospitality industry.

What this major covers

YEAR 1

You take two core courses that give you a fundamental understanding of applied food and beverage management, and international hospitality management. You're also introduced to human resource management in hospitality, human and organisational behaviour, and social enterprise and innovation in hospitality. You also take the first courses from your second major, minor(s) or elective courses.

YEAR 2

This year you explore critical and ethical perspectives of hospitality and its role in society, service design and how to create an excellent guest experience. You also take courses from your second major, minor(s) or elective courses.

YEAR 3

You further your knowledge of people management in hospitality and tourism, leadership principles and innovation in hospitality. You also take the final courses from your second major, minor(s) or elective courses. In your final semester, you complete valuable workplace experience with an organisation (this is the Work Integrated Learning course). It's a great opportunity to develop industry networks and make a decision on your professional career after graduation.

Career opportunities

- Hospitality recruitment
- Training and development
- Employment relations
- Human resource manager
- Corporate or regional sales
- Guest relations

Bachelor of International Hospitality Management Hospitality Management

Scan this QR code for details about courses, where your study could lead, and stories about our great graduates and students.



Explore what it takes to manage a successful hospitality business, and become familiar with finance, administration, marketing and other aspects of hospitality management. The Hospitality Management major will give you in-depth knowledge of the way hospitality businesses operate. You'll develop your decision making, organisational and strategic thinking skills while working in sustainable ways in a hospitality organisation.

What this major covers

YEAR 1

You take two core courses that give you a fundamental understanding of applied food and beverage management, and international hospitality management. You're also introduced to human resource management in hospitality, finance and financial decision-making in hospitality, and the global context of food and beverage management. You also take the first courses from your second major, minor(s) or elective courses.

YEAR 2

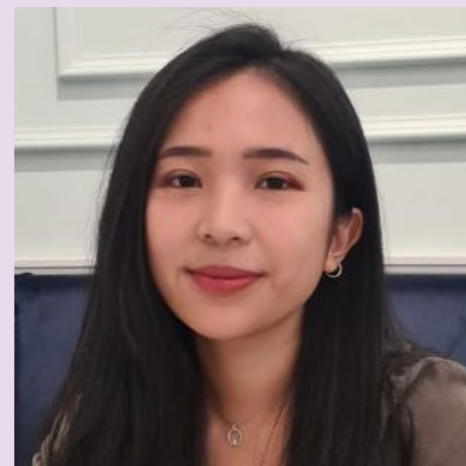
This year you become familiar with critical and ethical perspectives of hospitality and its role in society, and marketing in hospitality and tourism. You also take courses from your second major, minor(s) or elective courses.

YEAR 3

You explore strategic perspectives for hospitality and tourism organisations, innovation in hospitality, hotel management, hospitality in the digital age, and revenue management in hospitality and tourism. You also take the final courses from your second major, minor(s) or elective courses. In your final semester, you complete valuable workplace experience with an organisation (this is the Work Integrated Learning course). It's a great opportunity to develop industry networks and make a decision on your professional career after graduation.

Career opportunities

- Sales and marketing manager
- Hotel manager
- Restaurant entrepreneurship
- Tour operations and attractions
- National and regional tourism organisations



"I'd definitely recommend AUT because it gives students many opportunities, and its industry connections can provide invaluable hands-on experience that truly prepares students for their future careers. The classes, as well as the variety of events and networking sessions organised by AUT, have not only enabled me to make friends with fellow students but also to interact with industry professionals. This networking is invaluable, as it helps me build relationships that can enhance my career prospects. The lecturers are not only knowledgeable but also genuinely supportive, making it easier to seek guidance and mentorship. I also love how friendly and supportive the lecturers are. I can feel that they truly care about students."

Gabrielle Jocelyn Tanton
3rd-year student, Bachelor of International Hospitality Management in Hospitality Management with a minor in Hospitality Enterprise

Diploma in Arts

Scan this QR code for details about courses, where your study could lead, and stories about our great graduates and students.



Interested in culture and society? Start your university studies with our Diploma in Arts. It's another way into AUT; perfect if you're not entirely sure what to expect from uni, or missed out on getting into your dream degree. You'll take the same courses as our first-year bachelor's degree students, and study in a supportive environment with additional academic and student support. It's a great way to try university and gain a qualification in one year. Once you've completed your diploma you can then move into Year 2 of the Bachelor of Arts or Bachelor of International Hospitality Management, which means you can still complete your chosen bachelor's degree in three years.

Entry requirements

Minimum entry requirements

- University Entrance OR
- 42 NCEA level 3 credits, including UE literacy and numeracy, with:
 - 10 credits in each of three approved subjects, OR
 - 12 credits in each of two approved subjects and 14 credits across two further subjects

English language requirements

IELTS (Academic) 5.5 overall with a minimum of 5.5 in writing and a minimum of 5.0 in other bands, or equivalent

What this qualification covers

You'll become familiar with different concepts related to culture and society, and improve your academic knowledge and study skills to give you the confidence for further study.

The courses you study are from the first year of the Bachelor of Arts or Bachelor of International Hospitality Management. After you've completed this diploma, you can then cross-credit your courses and transfer to the second year of our bachelor's degrees. Your diploma courses can also help you decide which subjects you might like to focus on later once you move into our bachelor's degree. We will work with you to help you identify where you want to go and what courses will help you get there.

Further study

- Bachelor of Arts
- Bachelor of International Hospitality Management

Because you study the same first-year courses as our bachelor's degree students, you can move into the second year of your chosen degree once you've completed this diploma.

DipArts | AK2001

QUICK FACTS

Level	5
Points	120
Duration	1 year full-time, part-time available ¹
Campus	City
Starts	23 Feb 2026



"Attending numerous events fuelled my curiosity about the intricacies of planning and executing an event. I found myself pondering the behind-the-scenes efforts and the challenges event organisers face when bringing everything together seamlessly. This desire to understand the inner workings of events, coupled with my enthusiasm for creating memorable experiences, led me to study event management. I started my studies with the Diploma in Arts before I moved into the second year of the Bachelor of Arts degree. The seamless transition into the bachelor's degree was particularly noteworthy for me. I consider the diploma an excellent entry point for those seeking something new without committing to a full three-year programme."

Lauren Stevens
Volunteer Coordinator, Rhythm and Vines
Bachelor of Arts in Event Management and Marketing
Diploma in Arts

¹ Part-time not available to students who have narrowly missed UE.

Diploma in Culinary Arts

Scan this QR code for course details and where this qualification could lead you.



The Diploma in Culinary Arts is an advanced professional cookery qualification that covers the skills to work in a professional culinary environment. Courses cover the professional cookery concepts and systems essential for managing a professional kitchen. You study in AUT's outstanding facilities, which are rated among the best in Australasia and resemble a professional culinary arts environment.

Entry requirements

Minimum entry requirements

- Completion of Year 12
- **NCEA:** 48 level 2 credits or higher including eight level 2 credits in any one subject from Art History, Business Studies, Classical Studies, Drama, Economics, English, Geography, Health Education, History, Media Studies, Social Studies, Te Reo Māori, Te Reo Rangatira, Physical Education
- **CAIE:** 60 points on the UCAS Tariff, including any one subject similar to the NCEA subjects listed above
- **IB:** Completion of Year 12

English language requirements

IELTS (Academic) of 5.5 overall with all bands 5.0 or higher; or equivalent

Other requirements

The practical side of this programme involves using commercial kitchen tools and equipment and requires you to demonstrate a level of skill that doesn't compromise any health and safety standards for yourself and others.

What this qualification covers

YEAR 1

Courses this year lay the foundation of professional cookery concepts and systems essential for managing a professional kitchen. You become familiar with culinary cooking processes and techniques, food safety, elementary nutrition and how to create balanced menu items.

YEAR 2

You develop the skills to manage a professional kitchen, and become familiar with advanced cooking techniques, the cuisine of the Pacific region and Aotearoa New Zealand, sensory perception in gastronomy, and dish design and menu planning. Under supervision, you'll work in teams to prepare, produce and serve food and beverages in a commercial kitchen and restaurant environment.

Career opportunities

Professional chef, product development.

DipCulArts | AK3714

QUICK FACTS

Level	5
Points	240
Duration	2 years full-time
Campus	City
Starts	23 Feb & 13 July 2026



"I've loved meeting new people and the opportunities that have come out from AUT. I've worked with famous New Zealand chefs and have loved taking in all of their knowledge. After volunteering at an event at AUT's Four Seasons Restaurant, I was offered the opportunity to work with Ben Bayly at his fine dining restaurant Ahi. I was also invited to work at the Winter Series – Don't fear the deer, which was hosted at AUT and showcased Cervena venison. During that event, I worked alongside Graham Brown, executive chef and international ambassador for the Deer Industry NZ. I'm currently working at The Bunker Restaurant in Queenstown, after previously working at Aosta in Arrowtown."

Brydone Inglis
Chef de Partie,
The Bunker Restaurant, Queenstown
Diploma in Culinary Arts

Diploma in Pâtisserie

Scan this QR code for course details and where this qualification could lead you.



Does a career in cakes, desserts and pastry appeal? The Diploma in Pâtisserie has a strong focus on creative, practical and business skills. This programme has been developed in response to industry and student demand for advanced skills in pâtisserie.

Entry requirements

Minimum entry requirements

- Completion of Year 12
- **NCEA:** 48 level 2 credits or higher including eight level 2 credits in any one subject from Art History, Business Studies, Classical Studies, Drama, Economics, English, Geography, Health Education, History, Media Studies, Social Studies, Te Reo Māori, Te Reo Rangatira, Physical Education
- **CAIE:** 60 points on the UCAS Tariff, including any one subject similar to the NCEA subjects listed above
- **IB:** Completion of Year 12

English language requirements

IELTS (Academic) of 5.5 overall with all bands 5.0 or higher; or equivalent

Other requirements

The practical side of this programme involves using commercial kitchen tools and equipment and requires you to demonstrate a level of skill that doesn't compromise any health and safety standards for yourself and others.

What this qualification covers

YEAR 1

This year you develop fundamental pâtisserie skills and learn how to make different types of pastries, cakes, sponges, gâteaux and torten, breads, and hot and cold desserts. You become familiar with basic food hygiene and safety practices, nutrition and food costing. This year also includes experience in a commercial food operation.

YEAR 2

You explore more advanced pâtisserie techniques, including artisan breads, sugar and chocolate confectionary, entremets and petits gâteaux, celebration cakes, and chocolate and sugar centrepieces. You also develop the skills to manage a professional kitchen, and become familiar with sensory perception in gastronomy and complete a two-week industry placement.

Career opportunities

Pâtissier, owner-operated small business enterprise, product development.

DipPat | AK3731

QUICK FACTS

Level	5
Points	240
Duration	2 years full-time
Campus	City
Starts	23 Feb 2026



"When I was little, I saw a cupcake kiosk that made me want to bake cupcakes too. Then as I delved more into the world of baking and pâtisserie, that dream morphed into becoming a pastry chef. Watching shows like Zumbo's Just Desserts and Choccywoccydoodah made me realise how much you can do, and the spectacular things these people can make. AUT has one of the most in-depth, practical-based pâtisserie courses. The lecturers I had were absolutely incredible – they were supportive, extremely knowledgeable, and let you make mistakes and try new things. My class also got quite close, so it was such a comfortable, fun learning environment and I know we'll continue to be friends."

Victoria Holland
Baker, The Sugar Dealer
Diploma in Pâtisserie

Graduate Diploma in Arts Graduate Certificate in Arts

Scan this QR code for course details and where these qualifications could lead you.



The Graduate Diploma in Arts and Graduate Certificate in Arts are designed for students with an undergraduate degree who want to continue into postgraduate study or develop knowledge in a new area.

Entry requirements

Minimum entry requirements

- A bachelor's degree OR
- Relevant professional qualification or experience (at least five years) approved by the dean (or representative) to be equivalent to a bachelor's degree

English language requirements

Interpreting and Translation

- IELTS (Academic) 7.0 overall with all bands 7.0 or higher; or equivalent

All other areas

- IELTS (Academic) 6.5 overall with all bands 6.0 or higher; or equivalent

What these qualifications cover

You gain an understanding of specific disciplines within culture and society. You choose courses from the Bachelor of Arts, Bachelor of Education or Bachelor of International Hospitality Management. You can tailor your study to your needs and career goals.

Graduate diploma

You choose courses in an area of interest to make up a total of 120 points. At least 75 points must be at level 7.

Graduate certificate

You choose courses in an area of interest to make up a total of 60 points. At least 45 points must be at level 7.

Career opportunities

These programmes prepare you for postgraduate study in your chosen field or to advance your career.

Graduate Diploma in Arts GradDipArts | AK1288

QUICK FACTS

Level	7
Points	120
Duration	1 year full-time, part-time available
Campus	City & North
Starts	23 Feb & 13 July 2026

Graduate Certificate in Arts GradCertArts | AK1289

QUICK FACTS

Level	7
Points	60
Duration	½ year full-time, 1 year part-time
Campus	City & North
Starts	23 Feb & 13 July 2026

Graduate Diploma in International Hospitality Management Graduate Certificate in International Hospitality Management

Scan this QR code for course details and where these qualifications could lead you.



Interested in hospitality? The Graduate Diploma and Graduate Certificate in International Hospitality Management are designed for students with an undergraduate degree who want to continue into postgraduate study or develop knowledge in hospitality.

Entry requirements

Minimum entry requirements

- A bachelor's degree OR
- Relevant professional qualification or experience approved by the dean (or representative) to be equivalent to a bachelor's degree

English language requirements

IELTS (Academic) 6.5 overall with all bands 6.0 or higher; or equivalent

What these qualifications cover

You choose courses from the Bachelor of International Hospitality Management, and develop your understanding of international hospitality management. You can tailor your study to your needs and career goals.

Graduate diploma

You choose courses in an area of interest to make up a total of 120 points. At least 75 points must be at level 7.

Graduate certificate

You choose courses in an area of interest to make up a total of 60 points. At least 45 points must be at level 7.

Career opportunities

These qualifications will give you advanced knowledge in international hospitality management, preparing you to advance professionally or pursue postgraduate study.

Graduate Diploma in International Hospitality Management GradDipIHM | AK1024

QUICK FACTS

Level	7
Points	120
Duration	1 year full-time, part-time available
Campus	City
Starts	23 Feb & 13 July 2026

Graduate Certificate in International Hospitality Management GradCertIHM | AK1230

QUICK FACTS

Level	7
Points	60
Duration	½ year full-time, 1 year part-time
Campus	City
Starts	23 Feb & 13 July 2026

Graduate Diploma in Secondary Teaching

Scan this QR code for course details and where this qualification could lead you.



GradDipSecTchg | AK3515

QUICK FACTS

Level	7
Points	120
Duration	1 year full-time
Campus	City
Starts	24 Feb & 13 July 2026

Career opportunities

Graduates are eligible to seek registration as a teacher and apply for teaching positions in secondary schools.

Want to teach your favourite secondary school subjects to a new generation of New Zealanders, and embark on a career that will inspire and make a difference to young people's lives? This professional qualification will give you practical techniques to teach your curriculum subject(s) in secondary schools.

Entry requirements

Minimum entry requirements

- A bachelor's-level degree (or higher) in a subject considered relevant for teaching in a New Zealand secondary school
- An Initial Teacher Education (ITE) Programme entry form
- Successfully complete the literacy and numeracy assessment
- Meet the Teaching Council of Aotearoa New Zealand English language competency requirement
- A face-to-face or online interview to explore suitability for teaching
- Must meet the "good character and fitness" criteria stipulated in the Teaching Council of Aotearoa New Zealand's registration and certification policy
- Police vetting (New Zealand and overseas if required)
- Satisfactory references
- Meet the safety check requirements as set out in the Children's Act 2014

What this qualification covers

This programme includes eight taught courses, and 16 weeks of practicum placements in two secondary schools. During campus-based courses, you also need to attend curriculum studies workshops in your teaching subjects.

You gain an understanding of education and society, the curriculum for secondary schools, diverse learning needs, and learn to design lesson plans for the secondary school environment. You then practise what you've learnt during your teaching placements.



"AUT has a high calibre of lecturers within the School of Education. I found the lecturers to be knowledgeable, empathetic, provocative and helpful. I'm currently working at Rosmini College as a health, physical education and te reo Māori teacher. Giving back has always been important in my life, and I think that through my love of te taiao, hākinakina and hauora, I can offer young taura something that may not have been previously available in their lives. Whether it's a hobby, an outlook or a career path, I want my students to have as many options as possible when they venture out into the real world."

Arana Rakena
Ngāpuhi
 Health, Physical Education and Te Reo Māori Teacher, Rosmini College
 Graduate Diploma in Secondary Teaching
 Bachelor of Sport and Recreation in Health and Physical Education



The AUT City Campus in the heart of Auckland City



University admission to AUT bachelor's degrees

University admission to AUT bachelor's degrees

If you're a New Zealand citizen or resident, or an international student studying in a New Zealand high school, you must meet the requirements for University Entrance to gain admission to bachelor's degrees, plus any additional requirements for your chosen programme such as specific subjects and interviews.

Admission categories

You may be granted University Entrance under:

- NCEA University Entrance
- Ad Eundem Statum admission (at an equivalent level) – this includes Cambridge Assessment International Education (CAIE) and International Baccalaureate Diploma Programme (IB)
- Discretionary Entrance
- Special Admission

To find out more about entry requirements, including entry requirements for international students, scan the QR code on the opposite page.

English language requirements

If you don't have English as your first language, you may have to show evidence of your English language skills. Visit aut.ac.nz/englishrequirements for details about English language testing and recognised English tests.

International students

Contact us for information regarding studying at AUT if you're not a citizen or permanent resident of New Zealand or Australia, or a citizen of the Cook Islands, Niue or Tokelau islands.

Visit aut.ac.nz/int/entryrequirements for entry requirements for specific countries. If you have any questions, you can contact us at aut.ac.nz/enquire

UniPrep programme

Not sure if you're ready for university or what to expect at AUT? Taking place over five weeks in January and February every year, UniPrep is designed to ease you into university life and ensure you get the best possible start. Expect to advance your study skills, make lifelong friends, take part in team activities, find out where to get support for your studies and complete your first university course. Once you're part of our UniPrep whānau, just know – we got you!

Visit aut.ac.nz/uniprep

NCEA university entrance

You must achieve all of the below

Level 3 (60 credits)	UE Literacy	Numeracy
<p>Within the 60 credits, you need to at least achieve the below</p> <ul style="list-style-type: none"> 14 credits in approved subject 1 14 credits in approved subject 2 14 credits in approved subject 3 18 credits from any Level 3 standards 	<ul style="list-style-type: none"> 5 Reading credits (Level 2 or 3) 5 Writing credits (Level 2 or 3) 	<ul style="list-style-type: none"> 10 Numeracy credits at Level 1, 2 or 3

To find out more visit www2.nzqa.govt.nz/ncea/understanding-secondary-quals/university-entrance

Getting UE through CAIE or IB? Here's what you will need:

CAIE	IB ¹
<p>120 points on the New Zealand CAIE Tariff at A or AS level in any subjects that are broadly equivalent to NCEA approved subjects</p> <p>D or above in at least 3 different subjects (excluding Thinking Skills)</p>	<p>E or above in English Language, Language and Literature in English or Literature at AS or A level</p> <p>D or above in IGCSE or GCSE Mathematics, or any mathematics subject passed at AS or A level</p>
<p>IB Diploma with a minimum 24 points</p>	<p>Literature or language and literature (SL or HL) – IB Group 1, with English as the language</p> <p>Any mathematics subject – IB Group 5</p>

1. New Zealand residents who have taken IB but have not been awarded the diploma may apply for discretionary entrance.

Ngā utu whakauru, ngā karahipi FEES & SCHOLARSHIPS

Cost is an important factor when thinking about university study. This page gives you an idea of the approximate tuition fees at AUT, and different options to help you fund your education including scholarships, student loans and allowances.

To give you an idea of approximate costs, the 2025 tuition fees are shown below (based on full-time study and completing 120 points per year). All fees are in NZ dollars and include GST. The 2026 tuition fees will be advertised on aut.ac.nz/fees as soon as they have been set. Please note, you may also need to pay additional fees for course materials or elective courses (check with your faculty if there are additional fees for your programme).

Domestic student tuition fees

Undergraduate programmes

Fee (per year): \$4,189 (60 points) –
\$10,172 (120 points)¹
(\$3,593–8,980 tuition fees +
\$596–\$1,192 student services levy)

1. Part-time students pay a proportion of the fee based on the number of academic points they are studying.

International student tuition fees

Undergraduate programmes

Fee (per year): \$17,596 (60 points) –
\$38,692 (120 points)
(\$17,000–\$37,500 tuition fees +
\$596–\$1,192 student services levy)

Please note that you must pay your fees in full by the date specified on your fees invoice.

To find out more about fees call **+64 9 921 9779** or **0800 AUT AUT** (0800 288 288).

Student loans and allowances¹

If you're a full-time domestic student, you may qualify for a student loan or allowance. Student loans and allowances are administered and paid by StudyLink. The application process can take some time, so it's a good idea to apply early. You can apply for a student loan or student allowance before your enrolment at AUT is complete.

To find out more call **0800 88 99 00** or visit studylink.govt.nz

Free fees for your university study¹

Eligible domestic students may receive their final year of full-time study fees-free. To check if you're eligible for fees-free study visit aut.ac.nz/fees

1. Domestic students only, not available to international students.

Financial assistance

We know that sometimes things happen and financial stress can impact your academic success. That's why we offer financial support that ranges from offering grocery or fuel vouchers, to helping with that unexpected bill.

StudyLink

Visit studylink.govt.nz for tools, tips and information to help you plan and understand the costs you will have while studying.

Scholarships and awards

Scholarships and awards are a great way to fund your university study. There is a wide range of scholarships and awards available to AUT students at all stages of their study including the Welcome to Auckland scholarship and Find Your Greatness scholarship (details below).

Visit the scholarships website for a full current list of scholarships offered by AUT and external funders, as well as application forms and closing dates. You can also contact AUT's Scholarships Office for advice on scholarships, awards and the scholarship application process.

AUT Welcome to Auckland Scholarships

Because we recognise the challenges students may face when moving to Auckland, AUT's three-year Welcome to Auckland scholarships make a contribution towards students' accommodation and study fees. These scholarships recognise high-achieving secondary school students living outside of Auckland who intend to enrol in bachelor's degree study commencing in 2026.

AUT Find Your Greatness Scholarships – School Leaver

AUT's Find Your Greatness undergraduate scholarships for school leavers reflect our commitment to creating great graduates. These three-year scholarships recognise students' academic achievement, as well as students' potential leadership ability and contribution to their school or community, cultural pursuits or sport at a representative level.

The Find Your Greatness scholarships are offered in the four categories below for study commencing in 2026:

- Academic Excellence
- All Rounder
- Hiki Ake (Lift Up)
- Kiwa (Māori and Pacific students)

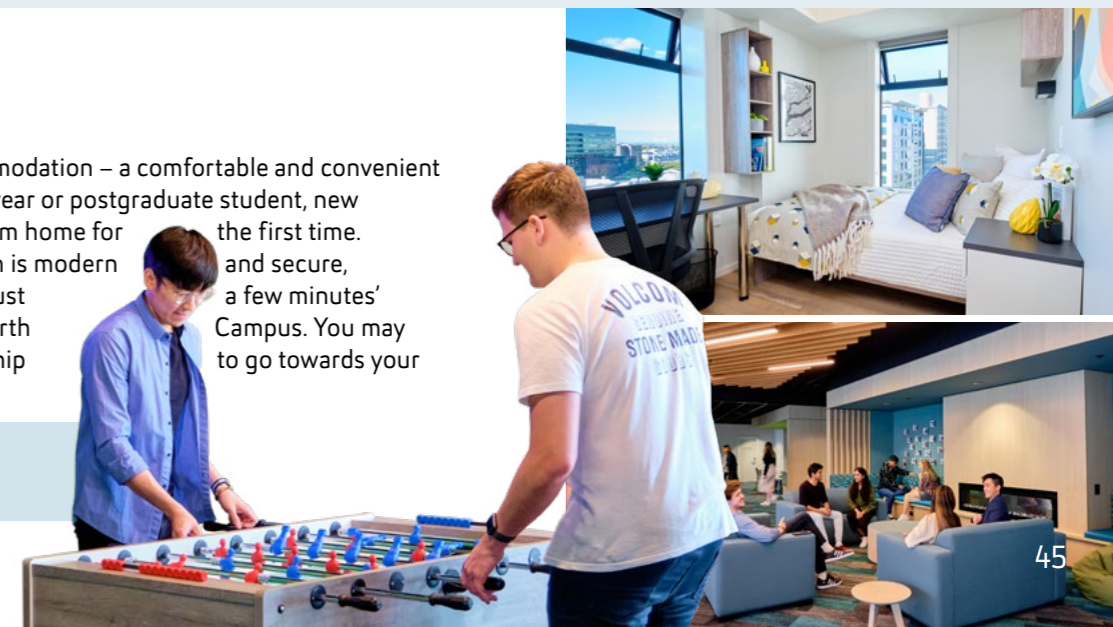
Applicants will be considered in all categories for which they are eligible.

To find out more call **+64 9 921 9837** or visit aut.ac.nz/scholarships

Accommodation

Check out our student accommodation – a comfortable and convenient option whether you're a first-year or postgraduate student, new to Auckland, or living away from home for the first time. AUT's student accommodation is modern and secure, offering a social community just a few minutes' walk away from our City or North Campus. You may even be eligible for a scholarship to go towards your accommodation costs.

Visit aut.ac.nz/accommodation



He pēhea te tono HOW TO APPLY

Below is the step-by-step guide to the application process.
For more information visit aut.ac.nz/apply

1 APPLY EARLY

Places are limited. Submit your application well before the semester starts.

APPLYING FOR 2026

- Semester 1
– apply by 1 December 2025
- Semester 2
– apply by 4 May 2026

2 COMPLETE THE APPLICATION FORM

- Apply online
- Indicate your programme(s) of choice and major (if known)

International students can also apply using an AUT approved international agent. For a list of AUT registered agents visit aut.ac.nz/international-agents

SUBMIT YOUR APPLICATION

WE ACKNOWLEDGE YOUR APPLICATION

- We will send you an acknowledgment email, which explains how to check the status of your application
- We will contact you if we need more information

WE ASSESS YOUR APPLICATION

- We assess your application to ensure you have met the entry criteria for the programme(s) you are applying for
- We consider your academic history and relevant experience to ensure you can succeed in your programme
- We let you know if your application has been successful

POSSIBLE OUTCOMES

CONFIRMED We would like to offer you a place to study at AUT

PROVISIONAL You have met some of the criteria for entry to your chosen programme of study and we would like to offer you a provisional place to study at AUT. If you don't meet the rest of the requirements, then this offer will be withdrawn

CONDITIONAL You have to meet the conditions and approvals listed in your conditional offer to be able to secure a formal offer of place

DECLINED If you don't meet the entry requirements or all places are taken, we may offer you an alternative programme

3 ACCEPT YOUR OFFER

It's important that you respond as soon as possible, particularly if you've been offered a place in a programme with limited places.

Once you've accepted your offer of place, we'll let you know how to enrol in the courses for your programme, and you can start to get excited about joining AUT.

Ready to apply?
apply.aut.ac.nz

Ētahi atu kōrero
FIND OUT MORE



aut.ac.nz

Need some help?

Visit aut.ac.nz/enquire, ask us your question and we'll call you back. Or you can phone **0800 AUT AUT** (0800 288 288) to speak to one of our friendly advisors. We can help with any questions you may have, and you could also book a course counselling session or a campus tour.

Campuses

City Campus
55 Wellesley Street East, Auckland Central

North Campus
90 Akoranga Drive, Northcote, Auckland

South Campus
640 Great South Road, Manukau, Auckland

Connect with us now:



AUT LIVE

Join us at our open day, AUT LIVE, on the City Campus and see everything AUT has to offer to help you make an educated decision about university study.

aut.ac.nz/live





0800 AUT AUT (0800 288 288)

Auckland University of Technology

Auckland, New Zealand

aut.ac.nz

Enquire now

aut.ac.nz/enquire

Connect with us now:



This booklet is printed on Satin matt paper which is certified by the Forest Stewardship Council® (FSC®) as an FSC Mix paper from well managed forests and other responsible sources.

We print using BIO-inks that contain materials that are based on renewable resources including wood resin (rosin, colophony), and vegetable oils, linseed oil and soybean oil and the printing company is FSC certified.