



STANDARD PATHWAY - NEUROLOGICAL REHABILITATION FOCUS

Postgraduate Certificate in Health Science¹
60 points from:

Courses listed in the Postgraduate Health Science table of courses with approval of programme leader* **60pts**

¹1-2 sem full-time, 2 years part-time.

Postgraduate Diploma in Health Science²
120 points from:

15 points from CORE COURSE 1

HEAL840 Critical Enquiry for Evidence Based Practice	15pts
HEAL811 Research Design & Methods	15pts
MAOH801 Māori Health Research Practice - Te Rangahau Hauora Māori	15pts
PUBH810 Pacific Health Research and Design	15pts

AND 15 points from CORE COURSE 2

HEAL812 Health Professional Practice	15pts
<i>HEAL813 Practice Reality</i>	15pts
MAOH804 Te Hau o te Ora - Hauora Māori Development	15pts

AND any remaining points from courses listed in the postgraduate health science courses table*.

90pts

²1 year full-time, 3 years part-time

Master of Health Science^{3a}
240 points from:

Postgraduate Diploma in Health Science courses[#]	120pts
HEAL999 Thesis**	120pts

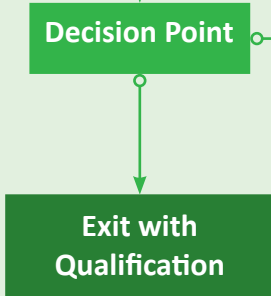
**Entry is subject to completion of all course work and approval from the Programme Leader.

[#]45 points must include the following courses:

RHAB805 Concepts of Rehabilitation	15pts
RHAB807 Motor Control in Rehabilitation	15pts
RHAB808 Neurological Rehabilitation	15pts

³2 years full-time, 5 years part-time.

PhD or DHSc⁴
360 points
⁴4 - 6 years



* Scan QR code for postgraduate health science courses.

a. If your focus is **Neurological Rehabilitation**, we recommend that you study the following courses from the Health Sciences Postgraduate Courses Table: **RHAB805**, **RHAB807** and **RHAB808**.
Italic - online courses

Contact :
Prof Denise Taylor
 P: (09) 921 9999 ext 9680
 E: denise.taylor@aut.ac.nz
 Enrol now: www.aut.ac.nz/apply